

For Research Use Only

HSPA1L Polyclonal antibody

Catalog Number: 13970-1-AP

Featured Product

6 Publications



Basic Information

Catalog Number:

13970-1-AP

Size:

150ul, Concentration: 350 ug/ml by Nanodrop and 240 ug/ml by Bradford method using BSA as the standard;

Source:

Rabbit

Isotype:

IgG

Immunogen Catalog Number:

AG4995

GenBank Accession Number:

BC034483

GeneID (NCBI):

3305

UNIPROT ID:

P34931

Full Name:

heat shock 70kDa protein 1-like

Calculated MW:

70 kDa

Observed MW:

70 kDa

Purification Method:

Antigen affinity purification

Recommended Dilutions:

WB 1:500-1:2000

IP 0.5-4.0 ug for 1.0-3.0 mg of total protein lysate

IHC 1:100-1:400

IF/ICC 1:50-1:500

Applications

Tested Applications:

WB, IHC, IF/ICC, IP, ELISA

Cited Applications:

WB, IF

Species Specificity:

human, mouse, rat

Cited Species:

human, mouse, rat, bovine

Note-IHC: suggested antigen retrieval with TE buffer pH 9.0; (*) Alternatively, antigen retrieval may be performed with citrate buffer pH 6.0

Positive Controls:

WB: mouse liver tissue, MCF-7 cells, HeLa cells, HepG2 cells, human saliva tissue, rat testis tissue

IP: HepG2 cells,

IHC: human endometrial cancer tissue, human breast cancer tissue, mouse brain tissue

IF/ICC: HepG2 cells,

Background Information

HSPA1L (Hsp70-like protein 1, also known as HSP70-hom) is a member of Hsp70 family of heat shock proteins. Recently it has been reported that HSPA1L can interact with TLR4, activate dendritic cells and induce Th1 Response. This antibody well recognized the endogenous HSPA1L protein in multiple cell lines. (21730052)

Notable Publications

Author	Pubmed ID	Journal	Application
Xiaomei Liu	30524373	Front Endocrinol (Lausanne)	WB
Xin Wang	32231871	PeerJ	WB,IF
Yuting Yang	33602268	Virol J	WB

Storage

Storage:

Store at -20°C. Stable for one year after shipment.

Storage Buffer:

PBS with 0.02% sodium azide and 50% glycerol pH 7.3.

Aliquoting is unnecessary for -20°C storage

*** 20ul sizes contain 0.1% BSA

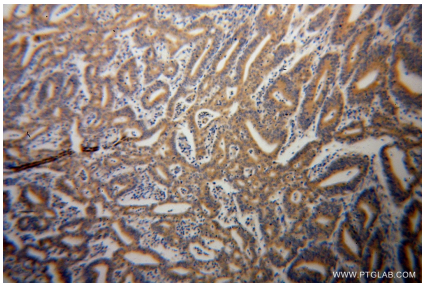
For technical support and original validation data for this product please contact:

T: 1 (888) 4PTGLAB (1-888-478-4522) (toll free in USA), or 1(312) 455-8498 (outside USA)

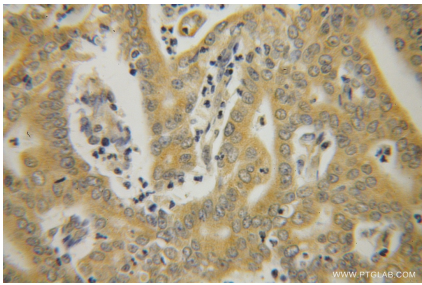
E: proteintech@ptglab.com
W: ptglab.com

This product is exclusively available under Proteintech Group brand and is not available to purchase from any other manufacturer.

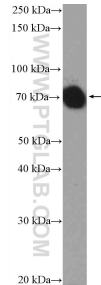
Selected Validation Data



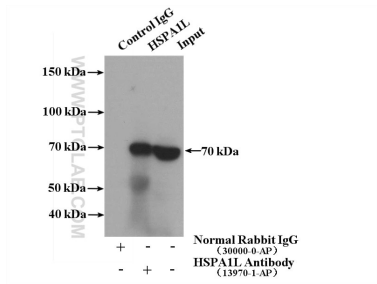
Immunohistochemical analysis of paraffin-embedded human endometrial cancer using 13970-1-AP (HSPA1L antibody) at dilution of 1:100 (under 10x lens).



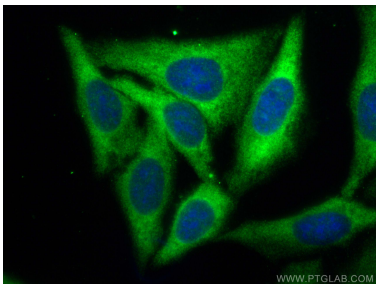
Immunohistochemical analysis of paraffin-embedded human endometrial cancer using 13970-1-AP (HSPA1L antibody) at dilution of 1:100 (under 40x lens).



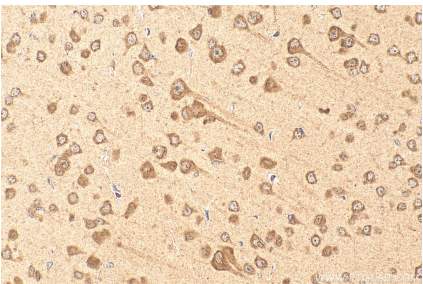
mouse liver tissue were subjected to SDS PAGE followed by western blot with 13970-1-AP (HSPA1L Antibody) at dilution of 1:1000 incubated at room temperature for 1.5 hours.



IP result of anti-HSPA1L (IP:13970-1-AP, 4ug; Detection:13970-1-AP 1:1000) with HepG2 cells lysate 1800ug.



Immunofluorescent analysis of (-20°C Ethanol) fixed HepG2 cells using HSPA1L antibody (13970-1-AP) at dilution of 1:200 and CoraLite®488-Conjugated AffiniPure Goat Anti-Rabbit IgG(H+L).



Immunohistochemical analysis of paraffin-embedded mouse brain tissue slide using 13970-1-AP (HSPA1L antibody) at dilution of 1:400 (under 40x lens). Heat mediated antigen retrieval with Tris-EDTA buffer (pH 9.0).