

For Research Use Only

# MKS3 Polyclonal antibody

Catalog Number: 13975-1-AP **33 Publications**



## Basic Information

### Catalog Number:

13975-1-AP

### Size:

150ul , Concentration: 350 ug/ml by Nanodrop and 300 ug/ml by Bradford method using BSA as the standard;

### Source:

Rabbit

### Isotype:

IgG

### Immunogen Catalog Number:

AG5009

### GenBank Accession Number:

BC032835

### GeneID (NCBI):

91147

### UNIPROT ID:

Q5HYA8

### Full Name:

transmembrane protein 67

### Calculated MW:

112 kDa

### Purification Method:

Antigen affinity purification

### Recommended Dilutions:

IHC 1:50-1:500

IF/ICC 1:50-1:500

## Applications

### Tested Applications:

IHC, IF/ICC, ELISA

### Cited Applications:

WB, IHC, IF

### Species Specificity:

human, mouse

### Cited Species:

human, mouse, zebrafish

**Note-IHC: suggested antigen retrieval with TE buffer pH 9.0; (\*) Alternatively, antigen retrieval may be performed with citrate buffer pH 6.0**

### Positive Controls:

IHC : human kidney tissue, human hepatocirrhosis tissue

IF/ICC : hTERT-RPE1 cells,

## Notable Publications

Author	Pubmed ID	Journal	Application
T Tony Yang	26365165	Sci Rep	IF
Yunfan Yang	25342559	Cell Res	WB
Laura Vuolo	30320547	Elife	IF

## Storage

### Storage:

Store at -20°C. Stable for one year after shipment.

### Storage Buffer:

PBS with 0.02% sodium azide and 50% glycerol pH 7.3.

Aliquoting is unnecessary for -20°C storage

\*\*\* 20ul sizes contain 0.1% BSA

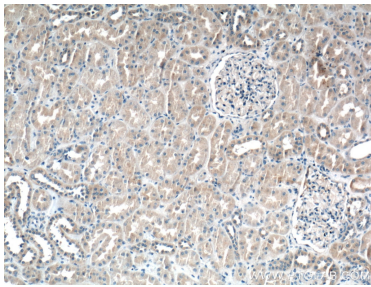
For technical support and original validation data for this product please contact:

T: 1 (888) 4PTGLAB (1-888-478-4522) (toll free in USA), or 1(312) 455-8498 (outside USA)

E: [proteintech@ptglab.com](mailto:proteintech@ptglab.com)  
W: [ptglab.com](http://ptglab.com)

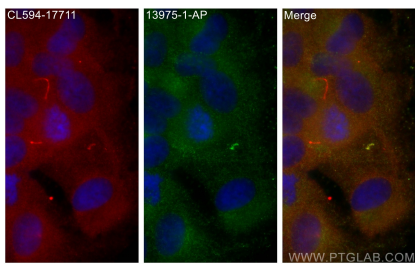
This product is exclusively available under Proteintech Group brand and is not available to purchase from any other manufacturer.

Selected Validation Data

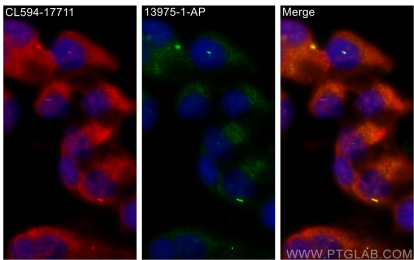


Immunohistochemical analysis of paraffin-embedded human kidney tissue slide using 13975-1-AP (MKS3 antibody) at dilution of 1:200 (under 10x lens).

Immunohistochemical analysis of paraffin-embedded human kidney tissue slide using 13975-1-AP (MKS3 antibody) at dilution of 1:200 (under 40x lens).



Immunofluorescent analysis of (-20°C Methanol) fixed hTERT-RPE1 cells using MKS3 antibody (13975-1-AP) at dilution of 1:200 and CoraLite®488-Conjugated AffiniPure Goat Anti-Rabbit IgG(H+L), CoraLite®594 ARL13B antibody (CL594-17711, red).



Immunofluorescent analysis of (-20°C Methanol) fixed hTERT-RPE1 cells using MKS3 antibody (13975-1-AP) at dilution of 1:200 and CoraLite®488-Conjugated AffiniPure Goat Anti-Rabbit IgG(H+L), CoraLite®594 ARL13B antibody (CL594-17711, red).