

For Research Use Only

# YES1 Polyclonal antibody

Catalog Number: 13977-1-AP



## Basic Information

<b>Catalog Number:</b> 13977-1-AP	<b>GenBank Accession Number:</b> BC048960	<b>Purification Method:</b> Antigen affinity purification
<b>Size:</b> 150ul , Concentration: 400 µg/ml by Nanodrop and 233 µg/ml by Bradford method using BSA as the standard;	<b>GeneID (NCBI):</b> 7525	<b>Recommended Dilutions:</b> IP 0.5-4.0 ug for IP and 1:200-1:1000 for WB
<b>Source:</b> Rabbit	<b>Full Name:</b> v-yes-1 Yamaguchi sarcoma viral oncogene homolog 1	<b>IHC 1:50-1:500</b>
<b>Isotype:</b> IgG	<b>Calculated MW:</b> 61 kDa	
<b>Immunogen Catalog Number:</b> AG5016	<b>Observed MW:</b> 62 kDa	

## Applications

<b>Tested Applications:</b> IHC, IP, ELISA	<b>Positive Controls:</b> IP : A431 cells,
<b>Species Specificity:</b> human	<b>IHC :</b> human breast cancer tissue, human colon cancer tissue
<b>Note-IHC: suggested antigen retrieval with TE buffer pH 9.0; (*) Alternatively, antigen retrieval may be performed with citrate buffer pH 6.0</b>	

## Background Information

YES1, also named as p61-Yes and YES, belongs to the protein kinase superfamily, Tyr protein kinase family and SRC subfamily. It promotes infectivity of Neisseria gonorrhoeae in epithelial cells by phosphorylating MCP/CD46. YES1 catalyzes the reaction: ATP + a [protein]-L-tyrosine = ADP + a [protein]-L-tyrosine phosphate.

## Storage

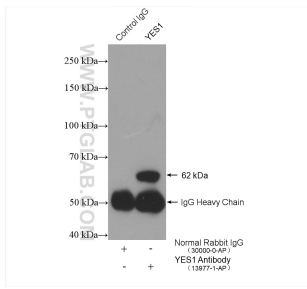
**Storage:**  
Store at -20°C. Stable for one year after shipment.  
**Storage Buffer:**  
PBS with 0.02% sodium azide and 50% glycerol pH 7.3.  
Aliquoting is unnecessary for -20°C storage

\*\*\* 20ul sizes contain 0.1% BSA

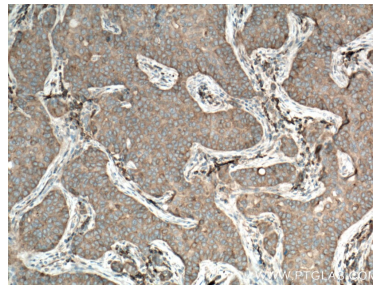
For technical support and original validation data for this product please contact:  
T: 1 (888) 4PTGLAB (1-888-478-4522) (toll free in USA), or 1(312) 455-8498 (outside USA)  
E: proteintech@ptglab.com  
W: ptglab.com

This product is exclusively available under Proteintech Group brand and is not available to purchase from any other manufacturer.

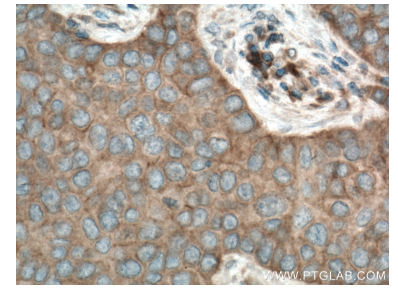
## Selected Validation Data



IP result of anti-YES1 (IP:13977-1-AP, 4ug; Detection:13977-1-AP 1:300) with A431 cells lysate 2280 ug.



Immunohistochemical analysis of paraffin-embedded human breast cancer tissue slide using 13977-1-AP (YES1 antibody) at dilution of 1:200 (under 10x lens. Heat mediated antigen retrieval with Tris-EDTA buffer (pH 9.0).



Immunohistochemical analysis of paraffin-embedded human breast cancer tissue slide using 13977-1-AP (YES1 antibody) at dilution of 1:200 (under 40x lens. Heat mediated antigen retrieval with Tris-EDTA buffer (pH 9.0).