

For Research Use Only

SEC63 Polyclonal antibody

Catalog Number: 13978-1-AP

Featured Product

5 Publications



Basic Information

Catalog Number:

13978-1-AP

Size:

150ul, Concentration: 800 ug/ml by Nanodrop and 400 ug/ml by Bradford method using BSA as the standard;

Source:

Rabbit

Isotype:

IgG

Immunogen Catalog Number:

AG5021

GenBank Accession Number:

BC047221

GeneID (NCBI):

11231

UNIPROT ID:

Q9UGP8

Full Name:

SEC63 homolog (S. cerevisiae)

Calculated MW:

88 kDa

Observed MW:

83-90 kDa

Purification Method:

Antigen affinity purification

Recommended Dilutions:

WB 1:1000-1:4000

IP 0.5-4.0 ug for 1.0-3.0 mg of total protein lysate

IHC 1:50-1:500

IF-P 1:50-1:500

IF/ICC 1:50-1:500

Applications

Tested Applications:

WB, IHC, IF/ICC, IF-P, IP, ELISA

Cited Applications:

WB, IF

Species Specificity:

human, mouse, rat

Cited Species:

human, mouse

Positive Controls:

WB : A431 cells, HEK-293 cells, PC-3 cells

IP : A431 cells,

IHC : human liver tissue, mouse pancreas tissue

IF-P : mouse kidney tissue,

IF/ICC : HEK-293 cells,

Note-IHC: suggested antigen retrieval with TE buffer pH 9.0; (*) Alternatively, antigen retrieval may be performed with citrate buffer pH 6.0

Background Information

SEC63 is an integral ER membrane protein. SEC63 and SEC62 form a dimeric complex and play a central role in the translocation of nascent and newly synthesized precursor polypeptides into the ER. Mutations in the gene encoding SEC63 cause polycystic liver disease in humans. The intact SEC63 protein is usually detected around 83-90 kDa, while smaller cleavage products can be observed by autophagy proteolysis (PMID: 25052096)

Notable Publications

Author	Pubmed ID	Journal	Application
Tetsuya Hirata	36055406	J Biol Chem	WB
Hossam Hassan	26303067	J Am Soc Nephrol	WB, IF
Brian J Conti	25801167	Mol Cell	WB

Storage

Storage:

Store at -20°C. Stable for one year after shipment.

Storage Buffer:

PBS with 0.02% sodium azide and 50% glycerol pH 7.3.

Aliquoting is unnecessary for -20°C storage

*** 20ul sizes contain 0.1% BSA

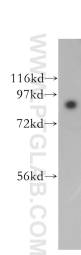
For technical support and original validation data for this product please contact:

T: 1 (888) 4PTGLAB (1-888-478-4522) (toll free in USA), or 1(312) 455-8498 (outside USA)

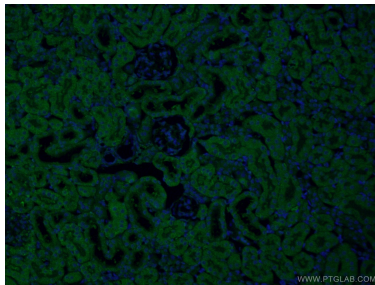
E: proteintech@ptglab.com
W: ptglab.com

This product is exclusively available under Proteintech Group brand and is not available to purchase from any other manufacturer.

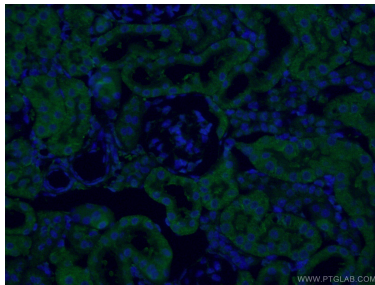
Selected Validation Data



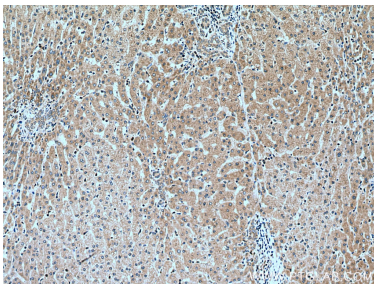
A431 cells were subjected to SDS PAGE followed by western blot with 13978-1-AP (SEC63 antibody) at dilution of 1:1000 incubated at room temperature for 1.5 hours.



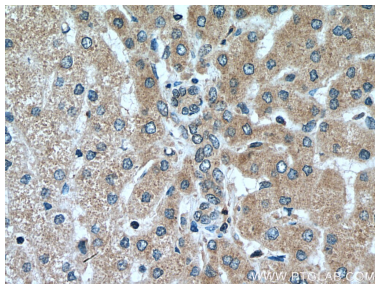
Immunofluorescent analysis of (4% PFA) fixed mouse kidney tissue using 13978-1-AP (SEC63 antibody) at dilution of 1:50 and Alexa Fluor 488-Conjugated Goat Anti-Rabbit IgG(H+L).



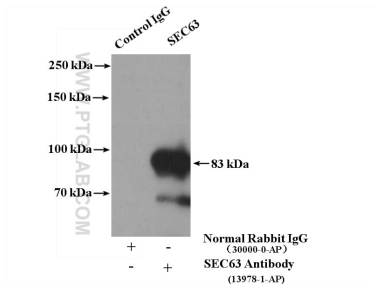
Immunofluorescent analysis of (4% PFA) fixed mouse kidney tissue using 13978-1-AP (SEC63 antibody) at dilution of 1:50 and Alexa Fluor 488-Conjugated Goat Anti-Rabbit IgG(H+L).



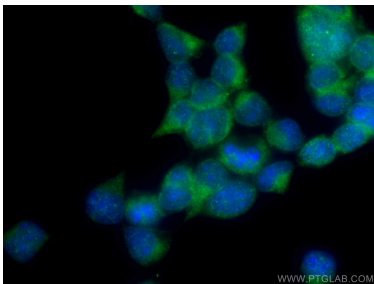
Immunohistochemical analysis of paraffin-embedded human liver tissue slide using 13978-1-AP (SEC63 antibody) at dilution of 1:200 (under 10x lens). Heat mediated antigen retrieval with Tris-EDTA buffer (pH 9.0).



Immunohistochemical analysis of paraffin-embedded human liver tissue slide using 13978-1-AP (SEC63 antibody) at dilution of 1:200 (under 40x lens). Heat mediated antigen retrieval with Tris-EDTA buffer (pH 9.0).



IP result of anti-SEC63 (IP:13978-1-AP, 4ug; Detection:13978-1-AP 1:300) with A431 cells lysate 2400ug.



Immunofluorescent analysis of (-20°C Ethanol) fixed HEK-293 cells using SEC63 antibody (13978-1-AP) at dilution of 1:200 and CoraLite®488-Conjugated Goat Anti-Rabbit IgG(H+L).