

For Research Use Only

TRAK1 Polyclonal antibody

Catalog Number: 13987-1-AP

1 Publications



Basic Information

Catalog Number:

13987-1-AP

Size:

150ul, Concentration: 750 ug/ml by Nanodrop and 380 ug/ml by Bradford method using BSA as the standard;

Source:

Rabbit

Isotype:

IgG

Immunogen Catalog Number:

AG5055

GenBank Accession Number:

BC015922

GeneID (NCBI):

22906

UNIPROT ID:

Q9UPV9

Full Name:

trafficking protein, kinesin binding 1

Calculated MW:

953 aa, 106 kDa

Observed MW:

64 kDa

Purification Method:

Antigen affinity purification

Recommended Dilutions:

WB 1:500-1:800

IHC 1:50-1:500

Applications

Tested Applications:

WB, IHC, ELISA

Cited Applications:

WB

Species Specificity:

human

Cited Species:

mouse

Positive Controls:

WB : HeLa cells, MNK-45 cells

IHC : human stomach tissue, human breast cancer tissue

Note-IHC: suggested antigen retrieval with TE buffer pH 9.0; (*) Alternatively, antigen retrieval may be performed with citrate buffer pH 6.0

Notable Publications

Author	Pubmed ID	Journal	Application
Hsueh-Fu Wu	37229433	Front Neurosci	WB

Storage

Storage:

Store at -20°C. Stable for one year after shipment.

Storage Buffer:

PBS with 0.02% sodium azide and 50% glycerol pH 7.3.

Aliquoting is unnecessary for -20°C storage

*** 20ul sizes contain 0.1% BSA

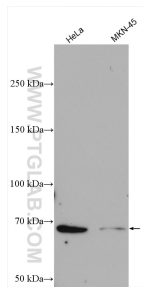
For technical support and original validation data for this product please contact:

T: 1 (888) 4PTGLAB (1-888-478-4522) (toll free in USA), or 1(312) 455-8498 (outside USA)

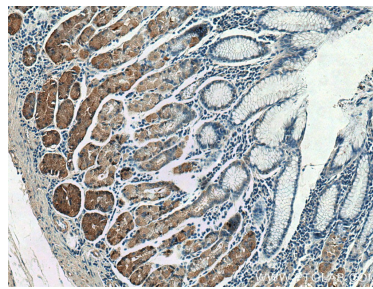
E: proteintech@ptglab.com
W: ptglab.com

This product is exclusively available under Proteintech Group brand and is not available to purchase from any other manufacturer.

Selected Validation Data



Various lysates were subjected to SDS PAGE followed by western blot with 13987-1-AP (TRAK1 antibody) at dilution of 1:800 incubated at room temperature for 1.5 hours.



Immunohistochemical analysis of paraffin-embedded human stomach tissue slide using 13987-1-AP (TRAK1 antibody) at dilution of 1:200 (under 10x lens)..