

For Research Use Only

GRK2 Polyclonal antibody

Catalog Number: 13990-1-AP

Featured Product

13 Publications



Basic Information

Catalog Number:

13990-1-AP

Size:

150ul, Concentration: 1200 ug/ml by Nanodrop and 653 ug/ml by Bradford method using BSA as the standard;

Source:

Rabbit

Isotype:

IgG

Immunogen Catalog Number:

AG5071

GenBank Accession Number:

BC037963

GeneID (NCBI):

156

UNIPROT ID:

P25098

Full Name:

adrenergic, beta, receptor kinase 1

Calculated MW:

689 aa, 80 kDa

Observed MW:

80 kDa

Purification Method:

Antigen affinity purification

Recommended Dilutions:

WB 1:500-1:2000

IP 0.5-4.0 ug for 1.0-3.0 mg of total protein lysate

IHC 1:50-1:500

Applications

Tested Applications:

WB, IHC, FC (Intra), IP, ELISA

Cited Applications:

WB, IHC, IP, CoIP

Species Specificity:

human

Cited Species:

human, mouse

Note-IHC: suggested antigen retrieval with TE buffer pH 9.0; (*) Alternatively, antigen retrieval may be performed with citrate buffer pH 6.0

Positive Controls:

WB : HL-60 cells, Jurkat cells

IP : HL-60 cells,

IHC : human lymphoma tissue, mouse brain tissue

FC (Intra) : HeLa cells,

Background Information

GRK2 (G-protein coupled receptor kinase 2) is also named as ADRBK1 (Beta-adrenergic receptor kinase 1), BARK, and BARK1. G-protein-coupled receptors (GPCRs) transmit extracellular signals across the cell membrane. GPCR kinases (GRKs) desensitize GPCR signals in the cell membrane. GRK2 translocation from the cytoplasm to the cell membrane in response to extracellular signals is critical to the function of the protein, where GRK phosphorylation is an important component of its translocation to the membrane.(PMID:27412951)

Notable Publications

Author	Pubmed ID	Journal	Application
Fan Yang	26347956	Nat Commun	WB
Chen Zhang	25279970	Cancer Biother Radiopharm	WB
Qiyin Zhou	35641493	Nat Commun	WB

Storage

Storage:

Store at -20°C. Stable for one year after shipment.

Storage Buffer:

PBS with 0.02% sodium azide and 50% glycerol, pH7.3

Aliquoting is unnecessary for -20°C storage

*** 20ul sizes contain 0.1% BSA

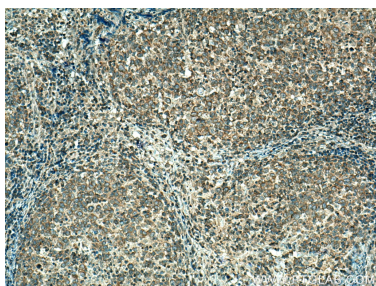
For technical support and original validation data for this product please contact:

T: 1 (888) 4PTGLAB (1-888-478-4522) (toll free in USA), or 1(312) 455-8498 (outside USA)

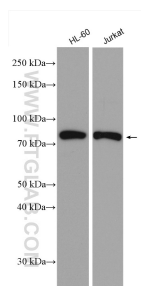
E: proteintech@ptglab.com
W: ptglab.com

This product is exclusively available under Proteintech Group brand and is not available to purchase from any other manufacturer.

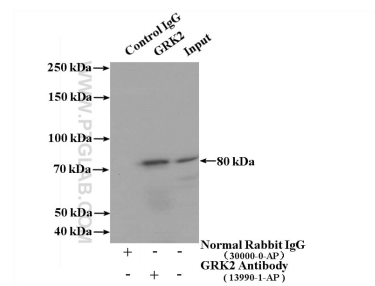
Selected Validation Data



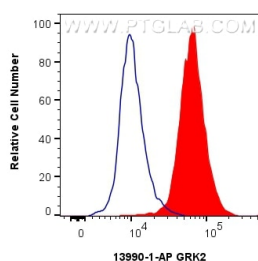
Immunohistochemical analysis of paraffin-embedded human lymphoma tissue slide using 13990-1-AP (GRK2 antibody) at dilution of 1:200 (under 10x lens). Heat mediated antigen retrieval with Tris-EDTA buffer (pH 9.0).



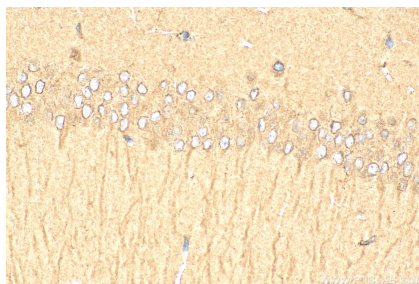
Various lysates were subjected to SDS PAGE followed by western blot with 13990-1-AP (GRK2 antibody) at dilution of 1:1000 incubated at room temperature for 1.5 hours.



IP result of anti-GRK2 (IP:13990-1-AP, 4ug; Detection:13990-1-AP 1:1000) with HL-60 cells lysate 3040ug.



1x10⁶ HeLa cells were intracellularly stained with 0.4 ug GRK2 Polyclonal antibody (13990-1-AP) and CoraLite@488-Conjugated AffiniPure Goat Anti-Rabbit IgG(H+L) (SA00013-2)(red), or 0.4 ug Rabbit IgG control Rabbit PolyAb (30000-0-AP) (blue). Cells were fixed with 4% PFA and permeabilized with Flow Cytometry Perm Buffer (PF00011-C).



Immunohistochemical analysis of paraffin-embedded mouse brain tissue slide using 13990-1-AP (GRK2 antibody) at dilution of 1:200 (under 40x lens). Heat mediated antigen retrieval with Tris-EDTA buffer (pH 9.0).