

For Research Use Only

LEFTY2 Polyclonal antibody

Catalog Number: 13991-1-AP

3 Publications



Basic Information

Catalog Number: 13991-1-AP	GenBank Accession Number: BC035718	Purification Method: Antigen affinity purification
Size: 150ul , Concentration: 650 µg/ml by Nanodrop and 380 µg/ml by Bradford method using BSA as the standard;	GeneID (NCBI): 7044	Recommended Dilutions: WB 1:500-1:1000 IHC 1:20-1:200 IF 1:20-1:200
Source: Rabbit	Full Name: left-right determination factor 2	
Isotype: IgG	Calculated MW: 366 aa, 41 kDa	
Immunogen Catalog Number: AG5073	Observed MW: 34 kDa	

Applications

Tested Applications: IF, IHC, WB, ELISA	Positive Controls:
Cited Applications: IF, IHC, WB	WB : HeLa cells, mouse uterus tissue
Species Specificity: human, mouse, rat	IHC : human endometrial cancer tissue,
Cited Species: human, mouse, rat	IF : HeLa cells,
Note-IHC: suggested antigen retrieval with TE buffer pH 9.0; (*) Alternatively, antigen retrieval may be performed with citrate buffer pH 6.0	

Background Information

Notable Publications

Author	Pubmed ID	Journal	Application
Qianqian Gao	34737126	Dev Biol	IHC
Weilun Fu	32486965	Stroke	IF
Haixia Ma	27072135	J Biol Chem	WB

Storage

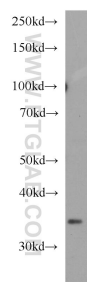
Storage:
Store at -20°C. Stable for one year after shipment.
Storage Buffer:
PBS with 0.02% sodium azide and 50% glycerol pH 7.3.
Aliquoting is unnecessary for -20°C storage

*** 20ul sizes contain 0.1% BSA

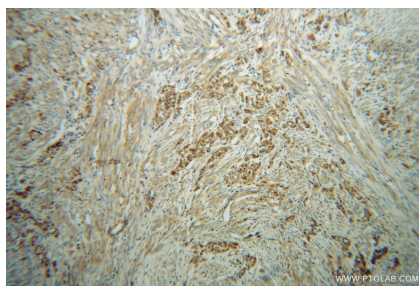
For technical support and original validation data for this product please contact:
T: 1 (888) 4PTGLAB (1-888-478-4522) (toll free in USA), or 1(312) 455-8498 (outside USA)
E: proteintech@ptglab.com
W: ptglab.com

This product is exclusively available under Proteintech Group brand and is not available to purchase from any other manufacturer.

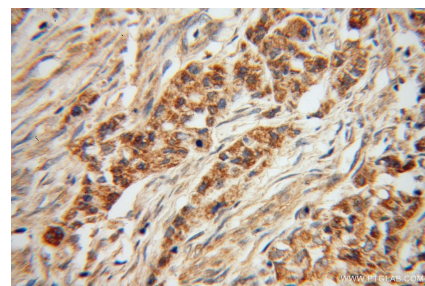
Selected Validation Data



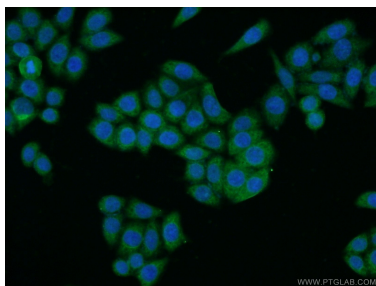
HeLa cells were subjected to SDS PAGE followed by western blot with 13991-1-AP (LEFTY2 antibody) at dilution of 1:500 incubated at room temperature for 1.5 hours.



Immunohistochemical analysis of paraffin-embedded human endometrial cancer using 13991-1-AP (LEFTY2 antibody) at dilution of 1:50 (under 10x lens).



Immunohistochemical analysis of paraffin-embedded human endometrial cancer using 13991-1-AP (LEFTY2 antibody) at dilution of 1:50 (under 40x lens).



Immunofluorescent analysis of HeLa cells using 13991-1-AP (LEFTY2 antibody) at dilution of 1:50 and Alexa Fluor 488-conjugated AffiniPure Goat Anti-Rabbit IgG(H+L).