

For Research Use Only

# OLIG2 Polyclonal antibody, PBS Only

Catalog Number:13999-1-PBS



## Basic Information

### Catalog Number:

13999-1-PBS

### Size:

100ug , Concentration: 1mg/ml by Nanodrop;

### Source:

Rabbit

### Isotype:

IgG

### Immunogen Catalog Number:

AG5089

### GenBank Accession Number:

BC047511

### GeneID (NCBI):

10215

### UNIPROT ID:

Q13516

### Full Name:

oligodendrocyte lineage transcription factor 2

### Calculated MW:

32 kDa

### Observed MW:

32-36 kDa

### Purification Method:

Antigen affinity purification

## Applications

### Tested Applications:

WB, IHC, IF-P, IF-Fro, IP, ELISA

### Species Specificity:

human, mouse, rat

## Background Information

OLIG2, also named as BHLHB1, BHLHE19, PRKCBP2 and RACK17, is required for oligodendrocyte and motor neuron specification in the spinal cord, as well as for the development of somatic motor neurons in the hindbrain. Cooperates with OLIG1, OLIG2 establish the pMN domain of the embryonic neural tube. Antagonist of V2 interneuron and of NIKX2-2-induced V3 interneuron development. OLIG2 is widely expressed in subsets of glia cells and progenitors, and it is strongly induced at different sites by both acute and chronic injury, albeit with different mechanisms. OLIG2 acts as a repressor of neurogenesis in cells reacting to brain injury. It may represent an effective approach towards evoking neuronal repair from parenchymal precursors.(PMID:19390819 )

## Storage

### Storage:

Store at -80°C.

### Storage Buffer:

PBS only, pH7.3

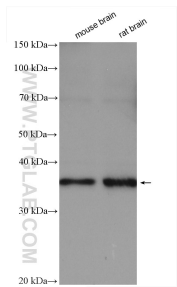
For technical support and original validation data for this product please contact:

T: 1 (888) 4PTGLAB (1-888-478-4522) (toll free in USA), or 1(312) 455-8498 (outside USA)

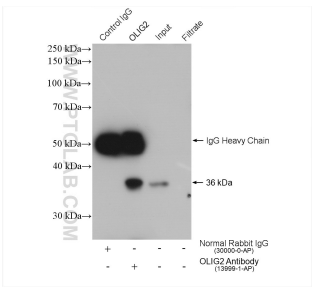
E: [proteintech@ptglab.com](mailto:proteintech@ptglab.com)  
W: [ptglab.com](http://ptglab.com)

This product is exclusively available under Proteintech Group brand and is not available to purchase from any other manufacturer.

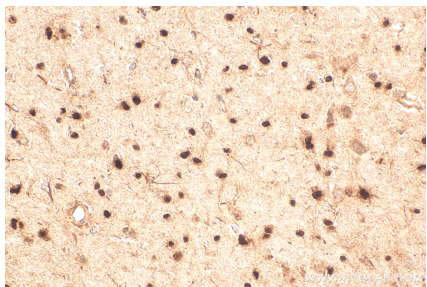
Selected Validation Data



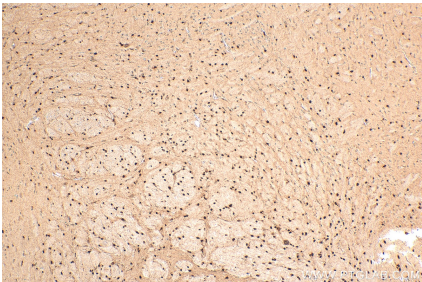
Various lysates were subjected to SDS PAGE followed by western blot with 13999-1-AP (OLIG2 antibody) at dilution of 1:4000 incubated at room temperature for 1.5 hours. This data was developed using the same antibody clone with 13999-1-PBS in a different storage buffer formulation.



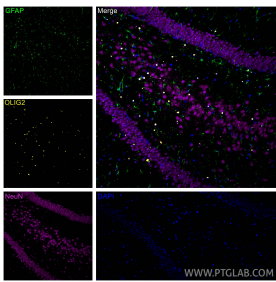
IP result of anti-OLIG2 (IP:13999-1-AP, 4ug; Detection:13999-1-AP 1:1000) with mouse brain tissue lysate 1600 ug. This data was developed using the same antibody clone with 13999-1-PBS in a different storage buffer formulation.



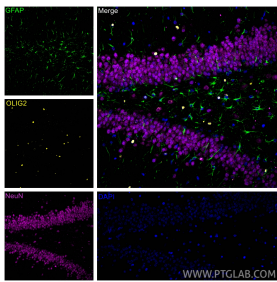
Immunohistochemical analysis of paraffin-embedded rat brain tissue slide using 13999-1-AP (OLIG2 antibody) at dilution of 1:1000 (under 40x lens). Heat mediated antigen retrieval with Tris-EDTA buffer (pH 9.0). This data was developed using the same antibody clone with 13999-1-PBS in a different storage buffer formulation.



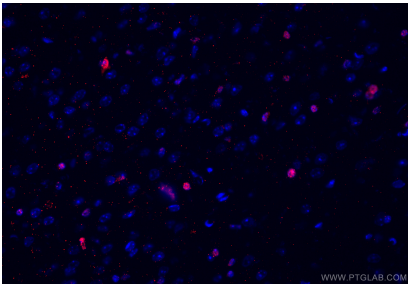
Immunohistochemical analysis of paraffin-embedded mouse brain tissue slide using 13999-1-AP (OLIG2 antibody) at dilution of 1:1000 (under 10x lens). Heat mediated antigen retrieval with Tris-EDTA buffer (pH 9.0). This data was developed using the same antibody clone with 13999-1-PBS in a different storage buffer formulation.



Immunofluorescent analysis of (4% PFA) fixed paraffin-embedded rat brain tissue using OLIG2 antibody (13999-1-AP) at dilution of 1:400 and Rhodamine (TRITC)-conjugated Goat Anti-Rabbit IgG(H+L) (SA00007-2), NeuN antibody (66836-1-Ig, Clone: 3A4C1, Magenta), CoraLite® Plus 488 GFAP antibody (CL488-60190, Clone: 4B2E10, green). Heat mediated antigen retrieval with Tris-EDTA buffer (pH 9.0). This data was developed using the same



Immunofluorescent analysis of (4% PFA) fixed paraffin-embedded rat brain tissue using OLIG2 antibody (13999-1-AP) at dilution of 1:400 and Rhodamine (TRITC)-conjugated Goat Anti-Rabbit IgG(H+L) (SA00007-2), NeuN antibody (66836-1-Ig, Clone: 3A4C1, Magenta), CoraLite® Plus 488 GFAP antibody (CL488-60190, Clone: 4B2E10, green). Heat mediated antigen retrieval with Tris-EDTA buffer (pH 9.0). This data was developed using the same



Immunofluorescent analysis of (4% PFA) fixed frozen OCT-embedded mouse brain tissue using OLIG2 antibody (13999-1-AP) at dilution of 1:400 and CoraLite®594-Conjugated Goat Anti-Rabbit IgG(H+L) (SA00013-4). This data was developed using the same antibody clone with 13999-1-PBS in a different storage buffer formulation.