

For Research Use Only

IGSF11 Polyclonal antibody

Catalog Number: 14003-1-AP

Featured Product

2 Publications



Basic Information

Catalog Number: 14003-1-AP	GenBank Accession Number: BC034411	Purification Method: Antigen affinity purification
Size: 150ul , Concentration: 400 µg/ml by Nanodrop and 233 µg/ml by Bradford method using BSA as the standard;	GeneID (NCBI): 152404	Recommended Dilutions: WB 1:500-1:1000 IHC 1:20-1:200
Source: Rabbit	Full Name: immunoglobulin superfamily, member 11	
Isotype: IgG	Calculated MW: 430 aa, 46 kDa	
Immunogen Catalog Number: AG5094	Observed MW: 40-50 kDa	

Applications

Tested Applications: IHC, WB, ELISA	Positive Controls:
Cited Applications: IF, IHC, WB	WB : human brain tissue, mouse skeletal muscle tissue
Species Specificity: human, mouse, rat	IHC : human kidney tissue,
Cited Species: human, mouse	

Note-IHC: suggested antigen retrieval with TE buffer pH 9.0; (*) Alternatively, antigen retrieval may be performed with citrate buffer pH 6.0

Background Information

Notable Publications

Author	Pubmed ID	Journal	Application
Xiaheng Deng	36123889	Medicine (Baltimore)	IHC
Kasumi Higashine	30176341	Neurosci Lett	WB, IHC, IF

Storage

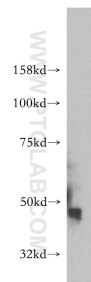
Storage:
Store at -20°C. Stable for one year after shipment.
Storage Buffer:
PBS with 0.02% sodium azide and 50% glycerol pH 7.3.
Aliquoting is unnecessary for -20°C storage

*** 20ul sizes contain 0.1% BSA

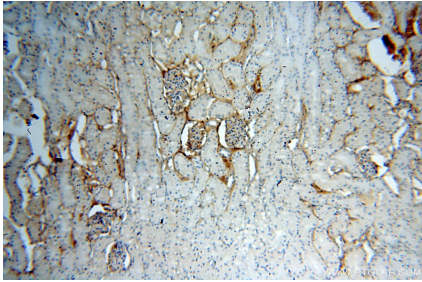
For technical support and original validation data for this product please contact:
T: 1 (888) 4PTGLAB (1-888-478-4522) (toll free in USA), or 1(312) 455-8498 (outside USA)
E: proteintech@ptglab.com
W: ptglab.com

This product is exclusively available under Proteintech Group brand and is not available to purchase from any other manufacturer.

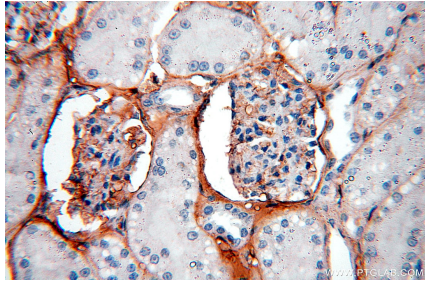
Selected Validation Data



human brain tissue were subjected to SDS PAGE followed by western blot with 14003-1-AP (IGSF11 antibody) at dilution of 1:500 incubated at room temperature for 1.5 hours.



Immunohistochemical analysis of paraffin-embedded human kidney using 14003-1-AP (IGSF11 antibody) at dilution of 1:50 (under 10x lens).



Immunohistochemical analysis of paraffin-embedded human kidney using 14003-1-AP (IGSF11 antibody) at dilution of 1:50 (under 40x lens).