

For Research Use Only

ELAVL2 Polyclonal antibody

Catalog Number: 14008-1-AP

Featured Product

19 Publications



Basic Information

Catalog Number:

14008-1-AP

Size:

150ul, Concentration: 700 ug/ml by Nanodrop and 367 ug/ml by Bradford method using BSA as the standard;

Source:

Rabbit

Isotype:

IgG

Immunogen Catalog Number:

AG5105

GenBank Accession Number:

BC030692

GeneID (NCBI):

1993

UNIPROT ID:

Q12926

Full Name:

ELAV (embryonic lethal, abnormal vision, Drosophila)-like 2 (Hu antigen B)

Calculated MW:

39 kDa

Observed MW:

39 kDa

Purification Method:

Antigen affinity purification

Recommended Dilutions:

WB 1:5000-1:50000

IP 0.5-4.0 ug for 1.0-3.0 mg of total protein lysate

IHC 1:20-1:200

Applications

Tested Applications:

WB, IHC, IP, ELISA

Cited Applications:

WB, IHC, IF, IP, CoIP, RIP

Species Specificity:

human, mouse, rat

Cited Species:

human, mouse, rat, chicken

Positive Controls:

WB: SH-SY5Y cells, mouse cerebellum tissue

IP: mouse cerebellum tissue,

IHC: human brain tissue,

Note-IHC: suggested antigen retrieval with TE buffer pH 9.0; (*) Alternatively, antigen retrieval may be performed with citrate buffer pH 6.0

Background Information

The ELAV (embryonic lethal abnormal visual system) gene of D. Melanogaste is the the first identified member of a family of neuronal RNA binding proteins that is conserved in metazoans. The proteins in this family contain three RNA Recognition Motifs (RRM), with a hinge region separating the second and third RRM and an optional non-conserved N-terminal region. The hinge includes signals essential for nuclear export and subcellular localization [PMID:9874760]. Elav is expressed specifically in the neurons and is required for the correct development and maintenance of the nervous system. ELAVL2 can binds RNA, and recognize a GAAA motif. In addition, it can bind to its own 3'-UTR, the FOS 3'-UTR and the ID 3'-UTR [PMID:18715504,21695151].

Notable Publications

Author	Pubmed ID	Journal	Application
Roberto De Gregorio	36178075	Development	IF
Yuzuru Kato	31657143	EMBO Rep	RIP
Satoshi Yokoi	36261283	J Neurosci	WB

Storage

Storage:

Store at -20°C. Stable for one year after shipment.

Storage Buffer:

PBS with 0.02% sodium azide and 50% glycerol pH 7.3.

Aliquoting is unnecessary for -20°C storage

*** 20ul sizes contain 0.1% BSA

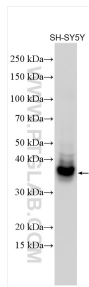
For technical support and original validation data for this product please contact:

T: 1 (888) 4PTGLAB (1-888-478-4522) (toll free in USA), or 1(312) 455-8498 (outside USA)

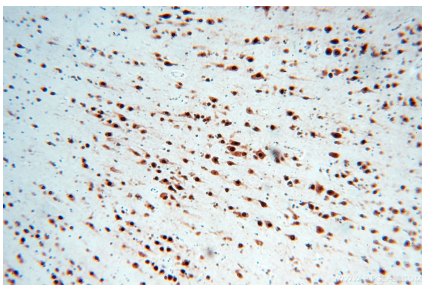
E: proteintech@ptglab.com
W: ptglab.com

This product is exclusively available under Proteintech Group brand and is not available to purchase from any other manufacturer.

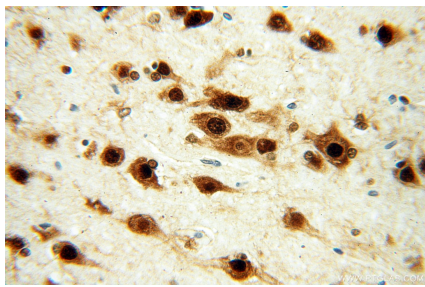
Selected Validation Data



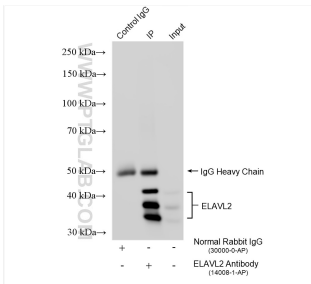
SH-SY5Y cells were subjected to SDS PAGE followed by western blot with 14008-1-AP (ELAVL2 antibody) at dilution of 1:30000 incubated at room temperature for 1.5 hours.



Immunohistochemical analysis of paraffin-embedded human brain using 14008-1-AP (ELAVL2 antibody) at dilution of 1:100 (under 10x lens).



Immunohistochemical analysis of paraffin-embedded human brain using 14008-1-AP (ELAVL2 antibody) at dilution of 1:100 (under 40x lens).



IP result of anti-ELAVL2 (IP:14008-1-AP, 4ug; Detection:14008-1-AP 1:30000) with mouse cerebellum tissue lysate 3000 ug.