

For Research Use Only

ESRRG Polyclonal antibody

Catalog Number:14017-1-AP

Featured Product

6 Publications



Basic Information

Catalog Number:

14017-1-AP

Size:

150ul , Concentration: 600 ug/ml by Nanodrop and 353 ug/ml by Bradford method using BSA as the standard;

Source:

Rabbit

Isotype:

IgG

Immunogen Catalog Number:

AG5127

GenBank Accession Number:

BC064700

GeneID (NCBI):

2104

UNIPROT ID:

P62508

Full Name:

estrogen-related receptor gamma

Calculated MW:

51 kDa

Observed MW:

51 kDa

Purification Method:

Antigen affinity purification

Recommended Dilutions:

WB 1:1000-1:4000

IHC 1:2000-1:8000

Applications

Tested Applications:

WB, IHC, ELISA

Cited Applications:

WB, IHC, IF

Species Specificity:

human, mouse, rat

Cited Species:

human, mouse, rat

Positive Controls:

WB : human spleen tissue, human kidney tissue

IHC : rat stomach tissue, mouse brain tissue, mouse heart tissue, rat brain tissue, rat heart tissue

Note-IHC: suggested antigen retrieval with TE buffer pH 9.0; (*) Alternatively, antigen retrieval may be performed with citrate buffer pH 6.0

Background Information

Estrogen-related receptor gamma (ERR-gamma), also known as NR3B3 (nuclear receptor subfamily 3, group B, member 3), is a member of nuclear hormone receptor family of steroid hormone receptors. As an orphan nuclear receptor, it binds specifically to an estrogen response element and activates reporter genes controlled by estrogen response elements. It behaves as a constitutive activator of transcription. 4-hydroxytamoxifen and diethylstilbestrol may act as inverse agonists and deactivate ESRRG. It also seems to be the target of bisphenol A. This antibody is a rabbit polyclonal antibody raised against residues near the C terminus of human ESRRG.

Notable Publications

| Author | Pubmed ID | Journal | Application |
|------------------------------------|-----------|-------------------------|-------------|
| Wei Gong | 27417234 | Int J Biochem Cell Biol | WB |
| Olubankole Aladesuyi Arogundade | 33588953 | Acta Neuropathol Commun | IHC,IF |
| Hye-Young Nam | 30131446 | Mol Cancer Res | WB |

Storage

Storage:

Store at -20°C. Stable for one year after shipment.

Storage Buffer:

PBS with 0.02% sodium azide and 50% glycerol pH 7.3.

Aliquoting is unnecessary for -20°C storage

*** 20ul sizes contain 0.1% BSA

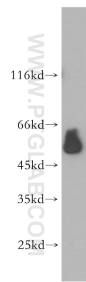
For technical support and original validation data for this product please contact:

T: 1 (888) 4PTGLAB (1-888-478-4522) (toll free in USA), or 1(312) 455-8498 (outside USA)

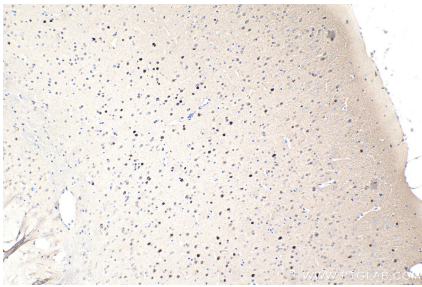
E: proteintech@ptglab.com
W: ptglab.com

This product is exclusively available under Proteintech Group brand and is not available to purchase from any other manufacturer.

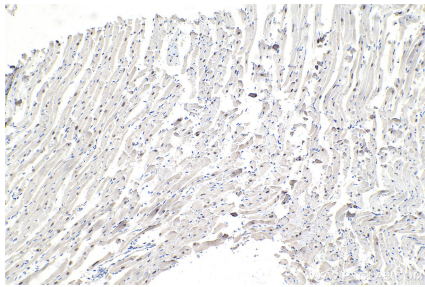
Selected Validation Data



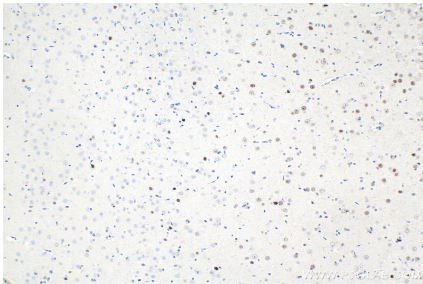
human spleen tissue were subjected to SDS PAGE followed by western blot with 14017-1-AP (ESRRG antibody) at dilution of 1:1000 incubated at room temperature for 1.5 hours.



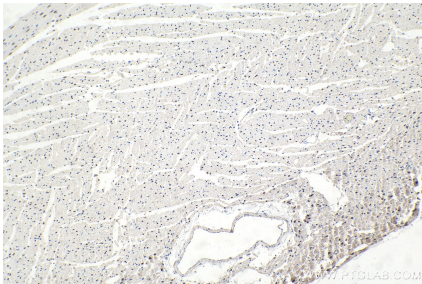
Immunohistochemical analysis of paraffin-embedded mouse brain tissue slide using 14017-1-AP (ESRRG antibody) at dilution of 1:4000 (under 10x lens). Heat mediated antigen retrieval with Tris-EDTA buffer (pH 9.0).



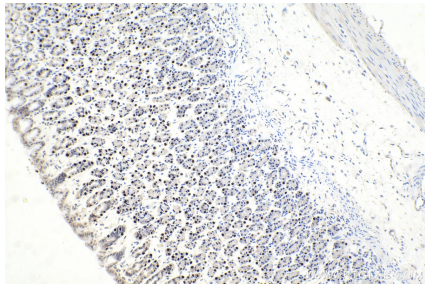
Immunohistochemical analysis of paraffin-embedded mouse heart tissue slide using 14017-1-AP (ESRRG antibody) at dilution of 1:4000 (under 10x lens). Heat mediated antigen retrieval with Tris-EDTA buffer (pH 9.0).



Immunohistochemical analysis of paraffin-embedded rat brain tissue slide using 14017-1-AP (ESRRG antibody) at dilution of 1:4000 (under 10x lens). Heat mediated antigen retrieval with Tris-EDTA buffer (pH 9.0).



Immunohistochemical analysis of paraffin-embedded rat heart tissue slide using 14017-1-AP (ESRRG antibody) at dilution of 1:4000 (under 10x lens). Heat mediated antigen retrieval with Tris-EDTA buffer (pH 9.0).



Immunohistochemical analysis of paraffin-embedded rat stomach tissue slide using 14017-1-AP (ESRRG antibody) at dilution of 1:4000 (under 10x lens). Heat mediated antigen retrieval with Tris-EDTA buffer (pH 9.0).