

For Research Use Only

BACH1 Polyclonal antibody

Catalog Number: 14018-1-AP

Featured Product

32 Publications



Basic Information

Catalog Number: 14018-1-AP	GenBank Accession Number: BC063307	Purification Method: Antigen affinity purification
Size: 150ul , Concentration: 1000 µg/ml by Nanodrop;	GeneID (NCBI): 571	Recommended Dilutions: WB 1:5000-1:50000 IHC 1:750-1:3000
Source: Rabbit	Full Name: BTB and CNC homology 1, basic leucine zipper transcription factor 1	
Isotype: IgG	Calculated MW: 82 kDa	
Immunogen Catalog Number: AG5128	Observed MW: 100-110 kDa	

Applications

Tested Applications: IHC, WB, ELISA	Positive Controls:
Cited Applications: ChIP, IF, IHC, WB	WB : HEK-293 cells, MCF-7 cells, Raji cells, HeLa cells, Jurkat cells, K-562 cells
Species Specificity: human	IHC : human cervical cancer tissue, human breast hyperplasia tissue, human breast cancer tissue
Cited Species: human, rat, mouse	

Note-IHC: suggested antigen retrieval with TE buffer pH 9.0; (*) Alternatively, antigen retrieval may be performed with citrate buffer pH 6.0

Background Information

BTB and CNC homology 1, basic leucine zipper transcription factor 1(BACH1) is a heme-regulated transcriptional regulator that acts as a repressor or activator and a member of the AP-2 superfamily. MafK belongs to the small Maf family that can function as transcriptional activators or repressors depending on the proteins with which they form heterodimers. BACH1 has crucial roles in both stress responses and transformation by H-RasV12. The molecular weight of expected mobility Bach1 is 100-110 kDa.

Notable Publications

Author	Pubmed ID	Journal	Application
Jose A Godoy-Lugo	36142809	Int J Mol Sci	WB
Yuji Shiozaki	34517786	Autophagy	WB
Yubo Zhao	36064939	Cell Death Dis	WB

Storage

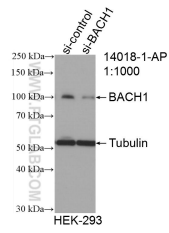
Storage:
Store at -20°C. Stable for one year after shipment.
Storage Buffer:
PBS with 0.02% sodium azide and 50% glycerol pH 7.3.
Aliquoting is unnecessary for -20°C storage

*** 20ul sizes contain 0.1% BSA

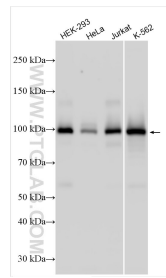
For technical support and original validation data for this product please contact:
T: 1 (888) 4PTGLAB (1-888-478-4522) (toll free in USA), or 1(312) 455-8498 (outside USA)
E: proteintech@ptglab.com
W: ptglab.com

This product is exclusively available under Proteintech Group brand and is not available to purchase from any other manufacturer.

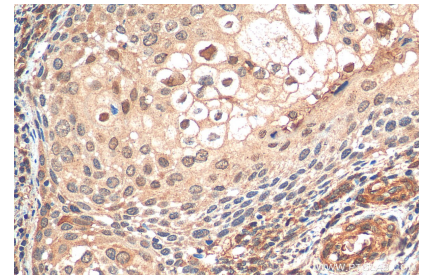
Selected Validation Data



WB result of BACH1 antibody (14018-1-AP; 1:1000; incubated at room temperature for 1.5 hours) with sh-Control and sh-BACH1 transfected HEK-293 cells.



Various lysates were subjected to SDS PAGE followed by western blot with 14018-1-AP (BACH1 antibody) at dilution of 1:15000 incubated at room temperature for 1.5 hours.



Immunohistochemical analysis of paraffin-embedded human cervical cancer tissue slide using 14018-1-AP (BACH1 antibody) at dilution of 1:1500 (under 40x lens). Heat mediated antigen retrieval with Tris-EDTA buffer (pH 9.0).