

For Research Use Only

PSMA8 Polyclonal antibody

Catalog Number: 14022-1-AP **2 Publications**



Basic Information

Catalog Number: 14022-1-AP	GenBank Accession Number: BC042820	Purification Method: Antigen affinity purification
Size: 150ul , Concentration: 600 µg/ml by Nanodrop and 380 µg/ml by Bradford method using BSA as the standard;	GeneID (NCBI): 143471	Recommended Dilutions: WB 1:500-1:2000 IHC 1:200-1:500 IF 1:10-1:100
Source: Rabbit	Full Name: proteasome (prosome, macropain) subunit, alpha type, 8	
Isotype: IgG	Calculated MW: 29 kDa	
Immunogen Catalog Number: AG5138	Observed MW: 28 kDa	

Applications

Tested Applications:
FC, IF, IHC, WB, ELISA

Cited Applications:
IF, WB

Species Specificity:
human, mouse, rat

Cited Species:
mouse

Note-IHC: suggested antigen retrieval with TE buffer pH 9.0; (*) Alternatively, antigen retrieval may be performed with citrate buffer pH 6.0

Positive Controls:

WB : Jurkat cells, K-562 cells, mouse thymus tissue, rat thymus tissue

IHC : human testis tissue, mouse testis tissue

IF : HepG2 cells,

Background Information

Notable Publications

Author	Pubmed ID	Journal	Application
Zhiming Li	35736136	Nucleic Acids Res	WB
Laura Gómez-H	31437213	PLoS Genet	IF

Storage

Storage:
Store at -20°C. Stable for one year after shipment.
Storage Buffer:
PBS with 0.02% sodium azide and 50% glycerol pH 7.3.
Aliquoting is unnecessary for -20°C storage

*** 20ul sizes contain 0.1% BSA

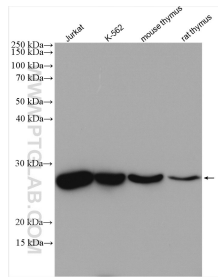
For technical support and original validation data for this product please contact:

T: 1 (888) 4PTGLAB (1-888-478-4522) (toll free in USA), or 1(312) 455-8498 (outside USA)

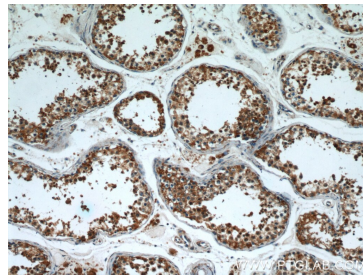
E: proteintech@ptglab.com
W: ptglab.com

This product is exclusively available under Proteintech Group brand and is not available to purchase from any other manufacturer.

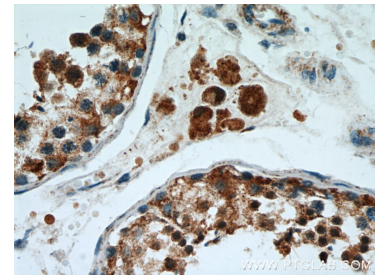
Selected Validation Data



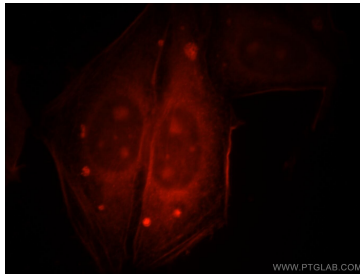
Various lysates were subjected to SDS PAGE followed by western blot with 14022-1-AP (PSMA8 antibody) at dilution of 1:1000 incubated at room temperature for 1.5 hours.



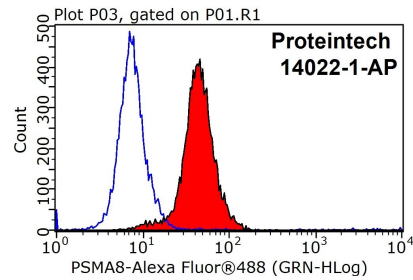
Immunohistochemical analysis of paraffin-embedded human testis using 14022-1-AP (PSMA8 antibody) at dilution of 1:50 (under 10x lens).



Immunohistochemical analysis of paraffin-embedded human testis using 14022-1-AP (PSMA8 antibody) at dilution of 1:50 (under 40x lens).



Immunofluorescent analysis of HepG2 cells, using PSMA8 antibody 14022-1-AP at 1:25 dilution and Rhodamine-labeled goat anti-rabbit IgG (red).



1×10^6 HepG2 cells were stained with .2ug PSMA8 antibody (14022-1-AP, red) and control antibody (blue). Fixed with 90% MeOH blocked with 3% BSA (30 min). Alexa Fluor 488-conjugated AffiniPure Goat Anti-Rabbit IgG(H+L) with dilution 1:1000.