

For Research Use Only

CTRP4 Polyclonal antibody

Catalog Number: 14023-1-AP **1 Publications**



Basic Information

Catalog Number: 14023-1-AP	GenBank Accession Number: BC035628	Purification Method: Antigen affinity purification
Size: 150ul , Concentration: 133 µg/ml by Nanodrop and 133 µg/ml by Bradford method using BSA as the standard;	GeneID (NCBI): 114900	Recommended Dilutions: WB 1:500-1:3000 IHC 1:20-1:200 IF 1:10-1:100
Source: Rabbit	Full Name: C1q and tumor necrosis factor related protein 4	
Isotype: IgG	Calculated MW: 329 aa, 35 kDa	
Immunogen Catalog Number: AG5147	Observed MW: 45 kDa	

Applications

Tested Applications: IF, IHC, WB, ELISA	Positive Controls:
Cited Applications: IHC	WB : BxPC-3 cells,
Species Specificity: human, mouse, rat	IHC : human brain tissue,
Cited Species: human	IF : BxPC-3 cells,

Note-IHC: suggested antigen retrieval with TE buffer pH 9.0; (*) Alternatively, antigen retrieval may be performed with citrate buffer pH 6.0

Background Information

Notable Publications

Author	Pubmed ID	Journal	Application
Wangshu Xu	31317005	Ann Transl Med	IHC

Storage

Storage:
Store at -20°C. Stable for one year after shipment.
Storage Buffer:
PBS with 0.02% sodium azide and 50% glycerol pH 7.3.
Aliquoting is unnecessary for -20°C storage

*** 20ul sizes contain 0.1% BSA

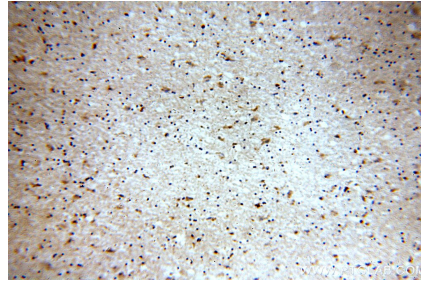
For technical support and original validation data for this product please contact:
T: 1 (888) 4PTGLAB (1-888-478-4522) (toll free in USA), or 1(312) 455-8498 (outside USA) E: proteintech@ptglab.com W: ptglab.com

This product is exclusively available under Proteintech Group brand and is not available to purchase from any other manufacturer.

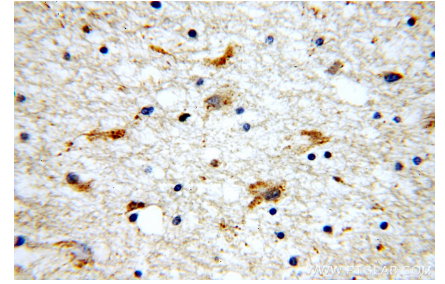
Selected Validation Data



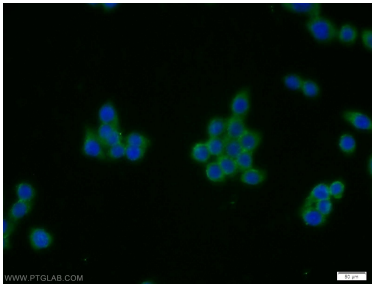
BxPC-3 cells were subjected to SDS PAGE followed by western blot with 14023-1-AP (CTRP4 antibody) at dilution of 1:1500 incubated at room temperature for 1.5 hours.



Immunohistochemical analysis of paraffin-embedded human brain using 14023-1-AP (CTRP4 antibody) at dilution of 1:100 (under 10x lens).



Immunohistochemical analysis of paraffin-embedded human brain using 14023-1-AP (CTRP4 antibody) at dilution of 1:100 (under 40x lens).



Immunofluorescent analysis of BxPC-3 cells using 14023-1-AP (CTRP4 antibody) at dilution of 1:25 and Alexa Fluor 488-conjugated AffiniPure Goat Anti-Rabbit IgG(H+L).