

For Research Use Only

# FATP2 Polyclonal antibody

Catalog Number: 14048-1-AP

Featured Product

44 Publications



## Basic Information

### Catalog Number:

14048-1-AP

### Size:

150ul, Concentration: 500 ug/ml by Nanodrop;

### Source:

Rabbit

### Isotype:

IgG

### Immunogen Catalog Number:

AG5217

### GenBank Accession Number:

BC057770

### GeneID (NCBI):

11001

### UNIPROT ID:

O14975

### Full Name:

solute carrier family 27 (fatty acid transporter), member 2

### Calculated MW:

567 aa, 65 kDa

### Observed MW:

70 kDa

### Purification Method:

Antigen affinity purification

### Recommended Dilutions:

WB 1:2000-1:16000

IP 0.5-4.0 ug for 1.0-3.0 mg of total protein lysate

IHC 1:250-1:1000

IF/ICC 1:50-1:500

## Applications

### Tested Applications:

WB, IHC, IF/ICC, IP, ELISA

### Cited Applications:

WB, IHC, IF, CoIP

### Species Specificity:

human, mouse, rat

### Cited Species:

human, mouse, rat

### Positive Controls:

WB: mouse kidney tissue, mouse liver, rat kidney, rat liver, mouse liver tissue, rat liver tissue

IP: HepG2 cells,

IHC: human liver cancer tissue, human kidney tissue

IF/ICC: HepG2 cells,

**Note-IHC: suggested antigen retrieval with TE buffer pH 9.0; (\*) Alternatively, antigen retrieval may be performed with citrate buffer pH 6.0**

## Background Information

FATP2 is a member of the FATP family which functions in lipid and bile metabolism. It is a 70-kDa protein predominantly expressed in liver and kidney. Kidney FATP2 is localized exclusively to proximal tubule epithelial cells along the apical but not the basolateral membrane, and regulates lipoapoptosis. FATP2 is involved in metabolism-related diseases including nonalcoholic fatty liver disease (NAFLD) and type 2 diabetes mellitus (T2DM), and is a potential clinical biomarker and therapeutic target.

## Notable Publications

| Author     | Pubmed ID | Journal                        | Application |
|------------|-----------|--------------------------------|-------------|
| Li-Sha Ran | 36115008  | J Nat Med                      | WB, IHC     |
| Lili Cheng | 28871336  | Arch Toxicol                   | WB          |
| Liping Luo | 36058506  | Cell Mol Gastroenterol Hepatol | WB          |

## Storage

### Storage:

Store at -20°C. Stable for one year after shipment.

### Storage Buffer:

PBS with 0.02% sodium azide and 50% glycerol pH 7.3.

Aliquoting is unnecessary for -20°C storage

\*\*\* 20ul sizes contain 0.1% BSA

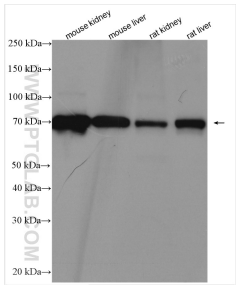
For technical support and original validation data for this product please contact:

T: 1 (888) 4PTGLAB (1-888-478-4522) (toll free in USA), or 1(312) 455-8498 (outside USA)

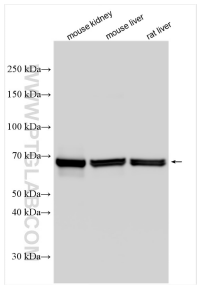
E: [proteintech@ptglab.com](mailto:proteintech@ptglab.com)  
W: [ptglab.com](http://ptglab.com)

This product is exclusively available under Proteintech Group brand and is not available to purchase from any other manufacturer.

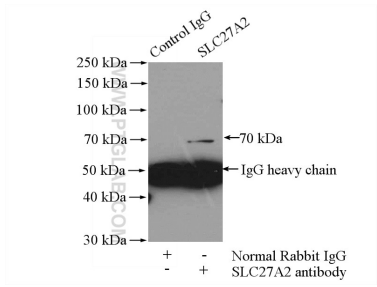
Selected Validation Data



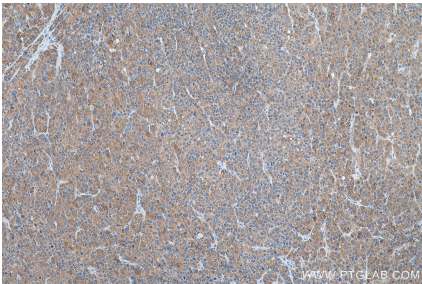
Various lysates were subjected to SDS PAGE followed by western blot with 14048-1-AP (FATP2 antibody) at dilution of 1:2000 incubated at room temperature for 1.5 hours.



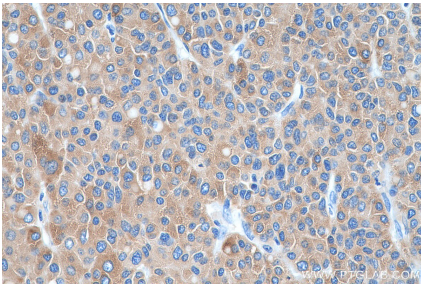
Various lysates were subjected to SDS PAGE followed by western blot with 14048-1-AP (FATP2 antibody) at dilution of 1:8000 incubated at room temperature for 1.5 hours.



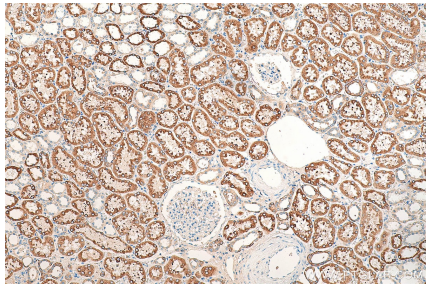
IP result of anti-FATP2 (IP:14048-1-AP, 4ug; Detection:14048-1-AP 1:500) with HepG2 cells lysate 3200ug.



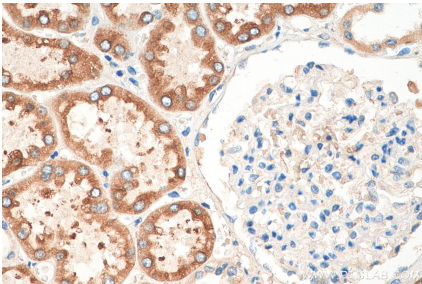
Immunohistochemical analysis of paraffin-embedded human liver cancer tissue slide using 14048-1-AP (FATP2 antibody) at dilution of 1:500 (under 10x lens). Heat mediated antigen retrieval with Tris-EDTA buffer (pH 9.0).



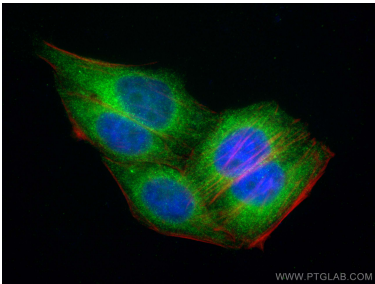
Immunohistochemical analysis of paraffin-embedded human liver cancer tissue slide using 14048-1-AP (FATP2 antibody) at dilution of 1:500 (under 40x lens). Heat mediated antigen retrieval with Tris-EDTA buffer (pH 9.0).



Immunohistochemical analysis of paraffin-embedded human kidney tissue slide using 14048-1-AP (FATP2 antibody) at dilution of 1:200 (under 10x lens). Heat mediated antigen retrieval with Tris-EDTA buffer (pH 9.0).



Immunohistochemical analysis of paraffin-embedded human kidney tissue slide using 14048-1-AP (FATP2 antibody) at dilution of 1:200 (under 40x lens). Heat mediated antigen retrieval with Tris-EDTA buffer (pH 9.0).



Immunofluorescent analysis of (4% PFA) fixed HepG2 cells using FATP2 antibody (14048-1-AP) at dilution of 1:200 and CoraLite® 488-Conjugated AffiniPure Goat Anti-Rabbit IgG(H+L) (SA00013-2), CL594-phalloidin (red).