

For Research Use Only

DLK/MAP3K12 Polyclonal antibody, PBS Only

Catalog Number: 14054-1-PBS

Featured Product



Basic Information

Catalog Number:

14054-1-PBS

Size:

100ug, Concentration: 1 mg/ml by
Nanodrop;

Source:

Rabbit

Isotype:

IgG

Immunogen Catalog Number:

AG4780

GenBank Accession Number:

BC050050

GeneID (NCBI):

7786

UNIPROT ID:

Q12852

Full Name:

mitogen-activated protein kinase
kinase kinase 12

Calculated MW:

567 aa, 64 kDa

Observed MW:

100-110 kDa

Purification Method:

Antigen affinity purification

Applications

Tested Applications:

WB, Indirect ELISA

Species Specificity:

human

Background Information

MAP3K12, also named as DLK ((dual leucine zipper kinase), is a part of a non-canonical MAPK signaling pathway. It has been reported that MAP3K12 can be activated by APOE through a receptor-mediated mechanism. MAP3K12 enhances the AP-1-mediated transcription of APP via a MAP kinase signal transduction pathway composed of MAP2K7, MAPK1/ERK2 and MAPK3/ERK1. MAP3K12 is required for pancreatic beta-cell proliferation during postnatal development and stress-induced JNK signaling in neurons. (PMID: 28111074, 25341110, 32189007)

Storage

Storage:

Store at -80°C.

Storage Buffer:

PBS only, pH7.3

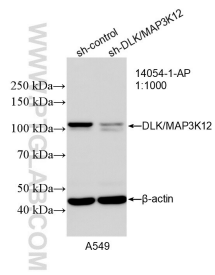
For technical support and original validation data for this product please contact:

T: 1 (888) 4PTGLAB (1-888-478-4522) (toll free
in USA), or 1(312) 455-8498 (outside USA)

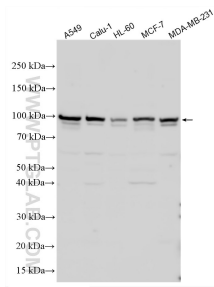
E: proteintech@ptglab.com
W: ptglab.com

This product is exclusively available under Proteintech Group brand and is not available to purchase from any other manufacturer.

Selected Validation Data



WB result of DLK/MAP3K12 antibody (14054-1-AP; 1:1000; incubated at room temperature for 1.5 hours) with sh-Control and sh-DLK/MAP3K12 transfected A549 cells. This data was developed using the same antibody clone with 14054-1-PBS in a different storage buffer formulation.



Various lysates were subjected to SDS PAGE followed by western blot with 14054-1-AP (DLK/MAP3K12 antibody) at dilution of 1:2500 incubated at room temperature for 1.5 hours. This data was developed using the same antibody clone with 14054-1-PBS in a different storage buffer formulation.