

For Research Use Only

SETD8 Polyclonal antibody

Catalog Number: 14063-1-AP

Featured Product

22 Publications



Basic Information

Catalog Number: 14063-1-AP	GenBank Accession Number: BC050346	Purification Method: Antigen affinity purification
Size: 150ul , Concentration: 900 µg/ml by Nanodrop;	GeneID (NCBI): 387893	Recommended Dilutions: WB 1:1000-1:4000 IHC 1:50-1:500
Source: Rabbit	Full Name: SET domain containing (lysine methyltransferase) 8	
Isotype: IgG	Calculated MW: 43 kDa	
Immunogen Catalog Number: AG5114	Observed MW: 43 kDa	

Applications

Tested Applications:
IHC, WB, ELISA

Cited Applications:
ChIP, CoIP, IF, IHC, IP, WB

Species Specificity:
human, mouse

Cited Species:
human, rat, mouse

Positive Controls:

WB : HeLa cells, RAW 264.7 cells, HepG2 cells, A549 cells, NIH/3T3 cells

IHC : human breast cancer tissue,

Note-IHC: suggested antigen retrieval with TE buffer pH 9.0; (*) Alternatively, antigen retrieval may be performed with citrate buffer pH 6.0

Background Information

SETD8, also known as Set8, PR-Set7, or KMT5A, is a member of the SET domain family of histone lysine methyltransferases and, to date, the only known enzyme that catalyzes monomethylation of H4K20 in eukaryotes, which is involved in DNA damage response, mitotic condensation, and DNA replication. SETD8 is overexpressed in various types of tumors, such as bladder cancer, non-small cell lung carcinoma, and small cell lung carcinoma, and is associated with a shorter survival time for gastric, esophageal, and prostate cancer patients.

Notable Publications

Author	Pubmed ID	Journal	Application
Xuefang Shen	33028948	Exp Mol Med	WB,IHC IF
Lihong Lu	34803485	Int J Biol Sci	WB,IHC,IF,CoIP
Mengqi Liu	34599596	Acta Biochim Biophys Sin (Shanghai)	WB,IHC

Storage

Storage:

Store at -20°C. Stable for one year after shipment.

Storage Buffer:

PBS with 0.02% sodium azide and 50% glycerol pH 7.3.

Aliquoting is unnecessary for -20°C storage

*** 20ul sizes contain 0.1% BSA

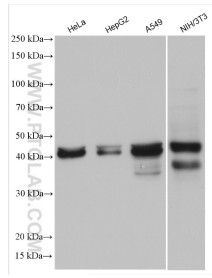
For technical support and original validation data for this product please contact:

T: 1 (888) 4PTGLAB (1-888-478-4522) (toll free in USA), or 1(312) 455-8498 (outside USA)

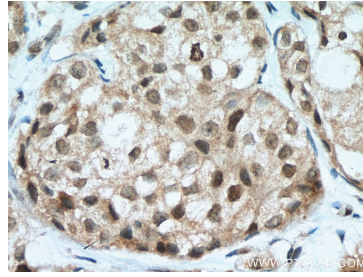
E: proteintech@ptglab.com
W: ptglab.com

This product is exclusively available under Proteintech Group brand and is not available to purchase from any other manufacturer.

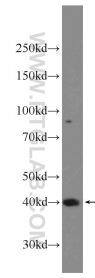
Selected Validation Data



Various lysates were subjected to SDS PAGE followed by western blot with 14063-1-AP (SETD8 antibody) at dilution of 1:2000 incubated at room temperature for 1.5 hours.



Immunohistochemical analysis of paraffin-embedded human breast cancer tissue slide using 14063-1-AP (SETD8 antibody) at dilution of 1:200 (under 40x lens). Heat mediated antigen retrieval with Tris-EDTA buffer (pH 9.0).



RAW 264.7 cells were subjected to SDS PAGE followed by western blot with 14063-1-AP (SETD8 Antibody) at dilution of 1:600 incubated at room temperature for 1.5 hours.