

For Research Use Only

CCP1 Polyclonal antibody

Catalog Number: 14067-1-AP

Featured Product

17 Publications



Basic Information

Catalog Number:

14067-1-AP

Size:

150ul, Concentration: 300 ug/ml by Nanodrop and 173 ug/ml by Bradford method using BSA as the standard;

Source:

Rabbit

Isotype:

IgG

Immunogen Catalog Number:

AG5122

GenBank Accession Number:

BC060815

GeneID (NCBI):

23287

UNIPROT ID:

Q9UPW5

Full Name:

ATP/GTP binding protein 1

Calculated MW:

138 kDa

Observed MW:

138 kDa

Purification Method:

Antigen affinity purification

Recommended Dilutions:

WB 1:500-1:3000

IP 0.5-4.0 ug for 1.0-3.0 mg of total protein lysate

IHC 1:50-1:500

IF/ICC 1:10-1:100

Applications

Tested Applications:

WB, IHC, IF/ICC, IP, ELISA

Cited Applications:

WB, IHC, IF, IP

Species Specificity:

human, mouse

Cited Species:

human, mouse, rat

Positive Controls:

WB : mouse brain tissue, A549 cells, mouse testis tissue

IP : mouse testis tissue,

IHC : human testis tissue, human heart tissue, mouse testis tissue

IF/ICC : A549 cells,

Note-IHC: suggested antigen retrieval with TE buffer pH 9.0; (*) Alternatively, antigen retrieval may be performed with citrate buffer pH 6.0

Background Information

AGTPBP1, also known as CCP1 (cytosolic carboxy-peptidase 1), or Nna1, belongs to the peptidase M14 family. AGTPBP1 is a zinc carboxypeptidase that contains nuclear localization signals and an ATP/GTP-binding motif. Thus, it may contribute to nuclear signaling events in differentiating and regenerating neurons. It serves important functions in the nervous system, and AGTPBP1 mutations may cause Purkinje cell degeneration (pcd) phenotypes.

Notable Publications

Author	Pubmed ID	Journal	Application
Stephen Gilmore-Hall	30337352	J Cell Biol	WB,IP
Vandana Shashi	30420557	EMBO J	WB,IF
Li Zhou	30225910	J Neurochem	WB

Storage

Storage:

Store at -20°C. Stable for one year after shipment.

Storage Buffer:

PBS with 0.02% sodium azide and 50% glycerol pH 7.3.

Aliquoting is unnecessary for -20°C storage

*** 20ul sizes contain 0.1% BSA

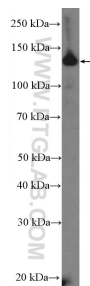
For technical support and original validation data for this product please contact:

T: 1 (888) 4PTGLAB (1-888-478-4522) (toll free in USA), or 1(312) 455-8498 (outside USA)

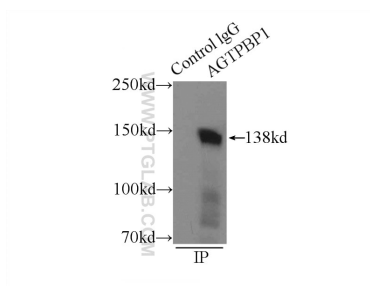
E: proteintech@ptglab.com
W: ptglab.com

This product is exclusively available under Proteintech Group brand and is not available to purchase from any other manufacturer.

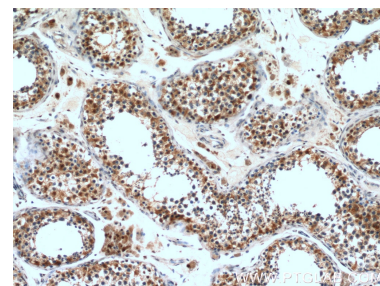
Selected Validation Data



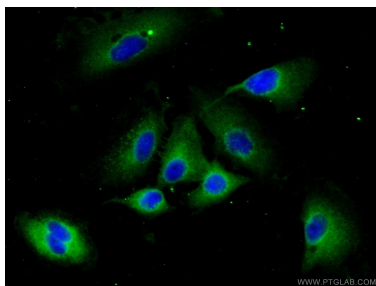
mouse brain tissue were subjected to SDS PAGE followed by western blot with 14067-1-AP (CCP1 Antibody) at dilution of 1:1500 incubated at room temperature for 1.5 hours.



IP result of anti-CCP1 (IP:14067-1-AP, 3ug; Detection:14067-1-AP 1:1000) with mouse testis tissue lysate 10000ug.



Immunohistochemical analysis of paraffin-embedded human testis tissue slide using 14067-1-AP (CCP1 Antibody) at dilution of 1:200 (under 10x lens).



Immunofluorescent analysis of (-20°C Ethanol) fixed A549 cells using 14067-1-AP (CCP1 antibody) at dilution of 1:25 and Alexa Fluor 488-conjugated Goat Anti-Rabbit IgG(H+L).