

For Research Use Only

INTS5 Polyclonal antibody

Catalog Number: 14069-1-AP

6 Publications



Basic Information

Catalog Number:

14069-1-AP

Size:

150ul, Concentration: 400 ug/ml by Nanodrop;

Source:

Rabbit

Isotype:

IgG

Immunogen Catalog Number:

AG5129

GenBank Accession Number:

BC060841

GeneID (NCBI):

80789

UNIPROT ID:

Q6P9B9

Full Name:

integrator complex subunit 5

Calculated MW:

108 kDa

Observed MW:

108 kDa

Purification Method:

Antigen affinity purification

Recommended Dilutions:

WB 1:1000-1:6000

IP 0.5-4.0 ug for 1.0-3.0 mg of total protein lysate

IHC 1:50-1:500

IF/ICC 1:20-1:200

Applications

Tested Applications:

WB, IHC, IF/ICC, IP, ELISA

Cited Applications:

WB

Species Specificity:

human, mouse, rat

Cited Species:

human, mouse

Positive Controls:

WB : HeLa cells, human brain tissue, NIH/3T3 cells, SKOV-3 cells

IP : HeLa cells,

IHC : human prostate cancer tissue,

IF/ICC : HeLa cells,

Note-IHC: suggested antigen retrieval with TE buffer pH 9.0; (*) Alternatively, antigen retrieval may be performed with citrate buffer pH 6.0

Background Information

INTS5, also named as INT5 and KIAA1698, is a component of the Integrator complex which involved in the small nuclear RNAs (snRNA) U1 and U2 transcription and in their 3'-box-dependent processing. The Integrator complex is associated with the C-terminal domain (CTD) of RNA polymerase II largest subunit (POLR2A) and is recruited to the U1 and U2 snRNAs genes.

Notable Publications

| Author | Pubmed ID | Journal | Application |
|----------------------|-----------|------------|-------------|
| Hai Zheng | 33243860 | Science | WB |
| Lauren G. Mascibroda | 36229431 | Nat Commun | WB |
| Xinxin Wang | 35476980 | Cell Rep | WB |

Storage

Storage:

Store at -20°C. Stable for one year after shipment.

Storage Buffer:

PBS with 0.02% sodium azide and 50% glycerol pH 7.3.

Aliquoting is unnecessary for -20°C storage

*** 20ul sizes contain 0.1% BSA

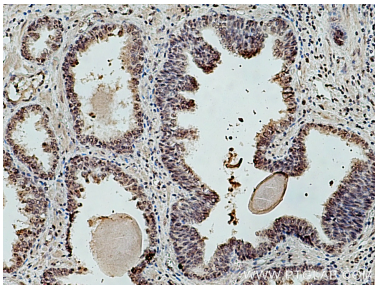
For technical support and original validation data for this product please contact:

T: 1 (888) 4PTGLAB (1-888-478-4522) (toll free in USA), or 1(312) 455-8498 (outside USA)

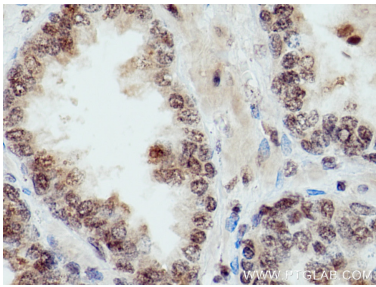
E: proteintech@ptglab.com
W: ptglab.com

This product is exclusively available under Proteintech Group brand and is not available to purchase from any other manufacturer.

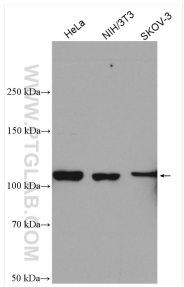
Selected Validation Data



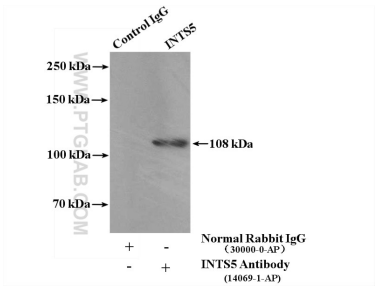
Immunohistochemical analysis of paraffin-embedded human prostate cancer tissue slide using 14069-1-AP (INTS5 antibody) at dilution of 1:200 (under 10x lens). Heat mediated antigen retrieval with Tris-EDTA buffer (pH 9.0).



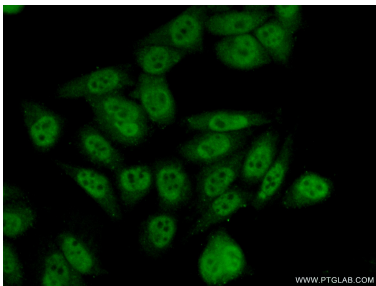
Immunohistochemical analysis of paraffin-embedded human prostate cancer tissue slide using 14069-1-AP (INTS5 antibody) at dilution of 1:200 (under 40x lens). Heat mediated antigen retrieval with Tris-EDTA buffer (pH 9.0).



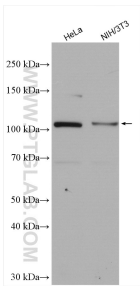
Various lysates were subjected to SDS PAGE followed by western blot with 14069-1-AP (INTS5 antibody) at dilution of 1:3000 incubated at room temperature for 1.5 hours.



IP result of anti-INTS5 (IP:14069-1-AP, 4ug; Detection:14069-1-AP 1:1000) with HeLa cells lysate 2000ug.



Immunofluorescent analysis of (10% Formaldehyde) fixed HeLa cells using 14069-1-AP (INTS5 antibody) at dilution of 1:50 and Alexa Fluor 488-conjugated AffiniPure Goat Anti-Rabbit IgG(H+L).



Various lysates were subjected to SDS PAGE followed by western blot with 14069-1-AP (INTS5 antibody) at dilution of 1:2000 incubated at room temperature for 1.5 hours.