

For Research Use Only

UBE2R2 Polyclonal antibody

Catalog Number: 14077-1-AP **3 Publications**



Basic Information

Catalog Number: 14077-1-AP	GenBank Accession Number: BC047584	Purification Method: Antigen affinity purification
Size: 150ul , Concentration: 450 µg/ml by Nanodrop and 247 µg/ml by Bradford method using BSA as the standard;	GeneID (NCBI): 54926	Recommended Dilutions: WB 1:500-1:1000 IHC 1:50-1:500 IF 1:50-1:500
Source: Rabbit	UNIPROT ID: Q712K3	
Isotype: IgG	Full Name: ubiquitin-conjugating enzyme E2R 2	
Immunogen Catalog Number: AG5202	Calculated MW: 27 kDa	
	Observed MW: 28-30 kDa	

Applications

Tested Applications: IF, IHC, WB, ELISA	Positive Controls: WB : Jurkat cells, HeLa cells, mouse spleen tissue IHC : human spleen tissue, IF : HeLa cells,
Cited Applications: WB	
Species Specificity: human, mouse, rat	
Cited Species: human, mouse	
Note-IHC: suggested antigen retrieval with TE buffer pH 9.0; (*) Alternatively, antigen retrieval may be performed with citrate buffer pH 6.0	

Notable Publications

Author	Pubmed ID	Journal	Application
Isabelle K Vila	31292296	JCI Insight	WB
Ying Cheng	38437929	Exp Gerontol	WB
Jason C Collins	37873213	bioRxiv	WB

Storage

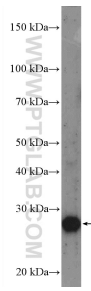
Storage:
Store at -20°C. Stable for one year after shipment.
Storage Buffer:
PBS with 0.02% sodium azide and 50% glycerol pH 7.3.
Aliquoting is unnecessary for -20°C storage

*** 20ul sizes contain 0.1% BSA

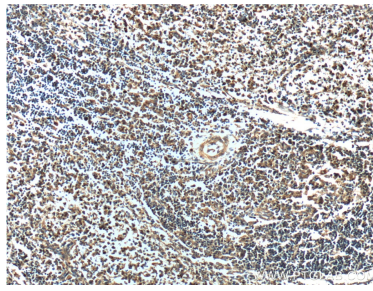
For technical support and original validation data for this product please contact:
T: 1 (888) 4PTGLAB (1-888-478-4522) (toll free in USA), or 1(312) 455-8498 (outside USA)
E: proteintech@ptglab.com
W: ptglab.com

This product is exclusively available under Proteintech Group brand and is not available to purchase from any other manufacturer.

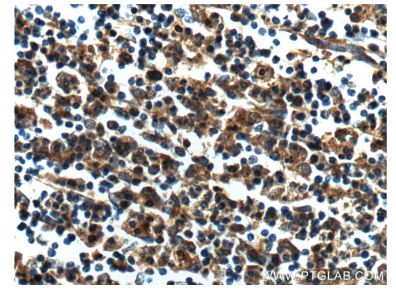
Selected Validation Data



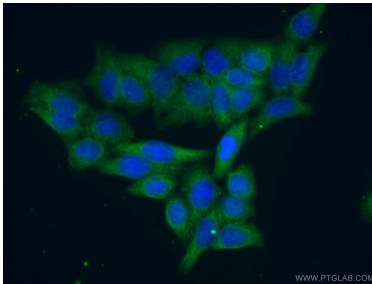
Jurkat cells were subjected to SDS PAGE followed by western blot with 14077-1-AP (UBE2R2 Antibody) at dilution of 1:600 incubated at room temperature for 1.5 hours.



Immunohistochemical analysis of paraffin-embedded human spleen tissue slide using 14077-1-AP (UBE2R2 Antibody) at dilution of 1:200 (under 10x lens).



Immunohistochemical analysis of paraffin-embedded human spleen tissue slide using 14077-1-AP (UBE2R2 Antibody) at dilution of 1:200 (under 40x lens).



Immunofluorescent analysis of (-20°C Ethanol) fixed HeLa cells using 14077-1-AP (UBE2R2 antibody) at dilution of 1:50 and Alexa Fluor 488-conjugated AffiniPure Goat Anti-Rabbit IgG(H+L).