

For Research Use Only

GNL1 Polyclonal antibody

Catalog Number: 14078-1-AP

1 Publications



Basic Information

Catalog Number: 14078-1-AP	GenBank Accession Number: BC018366	Purification Method: Antigen affinity purification
Size: 150ul, Concentration: 247 ug/ml by Bradford method using BSA as the standard;	GeneID (NCBI): 2794	Recommended Dilutions: WB 1:2000-1:12000 IHC 1:20-1:200 IF/ICC 1:200-1:800
Source: Rabbit	UNIPROT ID: P36915	
Isotype: IgG	Full Name: guanine nucleotide binding protein-like 1	
Immunogen Catalog Number: AG5203	Calculated MW: 607 aa, 69 kDa	
	Observed MW: 69 kDa	

Applications

Tested Applications: WB, IHC, IF/ICC, ELISA	Positive Controls:
Cited Applications: WB	WB : HeLa cells, Jurkat cells, Raji cells, U-937 cells, K-562 cells, MCF-7 cells
Species Specificity: human	IHC : human heart tissue, human skin tissue
Cited Species: human	IF/ICC : MCF-7 cells,

Note-IHC: suggested antigen retrieval with TE buffer pH 9.0; (*) Alternatively, antigen retrieval may be performed with citrate buffer pH 6.0

Background Information

Guanine nucleotide-binding protein-like 1 (GNL1), also known as HSR1, belongs to HSR1_MMR1 subfamily of nucleolar GTPases. It encodes 607 amino acids with a molecular mass of 69 kDa and contains basic amino acids rich N-terminus, acidic amino acids rich C-terminus and proline rich-domains. GNL1 plays a critical role in liver cell proliferation, but its function remains largely unknown (PMID: 18255255).

Notable Publications

Author	Pubmed ID	Journal	Application
Zewei Tu	33634092	Front Cell Dev Biol	WB

Storage

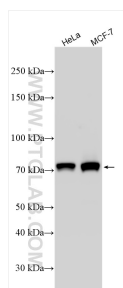
Storage:
Store at -20°C. Stable for one year after shipment.
Storage Buffer:
PBS with 0.02% sodium azide and 50% glycerol pH 7.3.
Aliquoting is unnecessary for -20°C storage

*** 20ul sizes contain 0.1%BSA

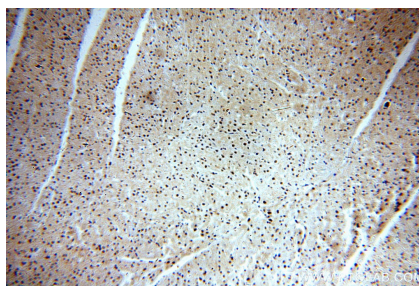
For technical support and original validation data for this product please contact:
T: 1 (888) 4PTGLAB (1-888-478-4522) (toll free in USA), or 1(312) 455-8498 (outside USA)
E: proteintech@ptglab.com
W: ptglab.com

This product is exclusively available under Proteintech Group brand and is not available to purchase from any other manufacturer.

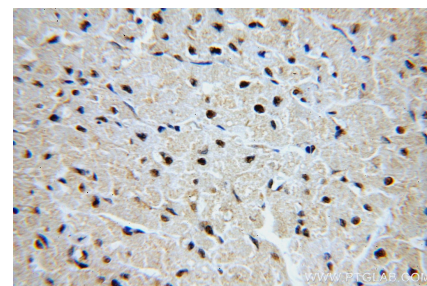
Selected Validation Data



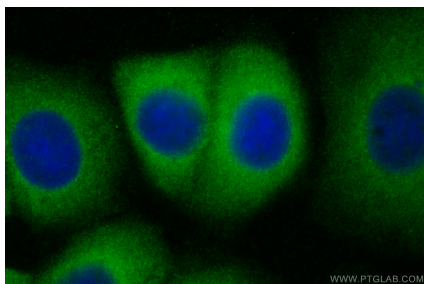
Various lysates were subjected to SDS PAGE followed by western blot with 14078-1-AP (GNL1 antibody) at dilution of 1:6000 incubated at room temperature for 1.5 hours.



Immunohistochemical analysis of paraffin-embedded human heart using 14078-1-AP (GNL1 antibody) at dilution of 1:100 (under 10x lens).



Immunohistochemical analysis of paraffin-embedded human heart using 14078-1-AP (GNL1 antibody) at dilution of 1:100 (under 40x lens).



Immunofluorescent analysis of (-20°C Methanol) fixed MCF-7 cells using GNL1 antibody (14078-1-AP) at dilution of 1:400 and CoraLite®488-Conjugated AffiniPure Goat Anti-Rabbit IgG(H+L).