

For Research Use Only

# NAPB Polyclonal antibody

Catalog Number: 14106-1-AP



## Basic Information

<b>Catalog Number:</b> 14106-1-AP	<b>GenBank Accession Number:</b> BC060840	<b>Purification Method:</b> Antigen affinity purification
<b>Size:</b> 150ul , Concentration: 500 µg/ml by Nanodrop;	<b>GeneID (NCBI):</b> 63908	<b>Recommended Dilutions:</b> WB 1:2000-1:10000 IP 0.5-4.0 ug for IP and 1:500-1:2000 for WB
<b>Source:</b> Rabbit	<b>Full Name:</b> N-ethylmaleimide-sensitive factor attachment protein, beta	<b>IHC 1:50-1:500</b> <b>IF 1:20-1:200</b>
<b>Isotype:</b> IgG	<b>Calculated MW:</b> 298 aa, 34 kDa	
<b>Immunogen Catalog Number:</b> AG5239	<b>Observed MW:</b> 34 kDa	

## Applications

### Tested Applications:

IF, IHC, IP, WB, ELISA

### Species Specificity:

human, mouse, rat

**Note-IHC: suggested antigen retrieval with TE buffer pH 9.0; (\*) Alternatively, antigen retrieval may be performed with citrate buffer pH 6.0**

### Positive Controls:

**WB:** mouse brain tissue, rat brain tissue

**IP:** mouse brain tissue,

**IHC:** human gliomas tissue,

**IF:** HepG2 cells,

## Background Information

### Storage

#### Storage:

Store at -20°C. Stable for one year after shipment.

#### Storage Buffer:

PBS with 0.02% sodium azide and 50% glycerol pH 7.3.

Aliquoting is unnecessary for -20°C storage

**\*\*\* 20ul sizes contain 0.1% BSA**

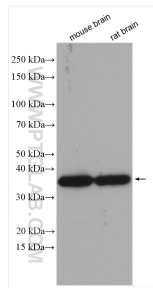
For technical support and original validation data for this product please contact:

T: 1 (888) 4PTGLAB (1-888-478-4522) (toll free in USA), or 1(312) 455-8498 (outside USA)

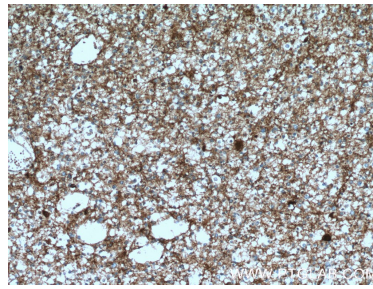
E: [proteintech@ptglab.com](mailto:proteintech@ptglab.com)  
W: [ptglab.com](http://ptglab.com)

**This product is exclusively available under Proteintech Group brand and is not available to purchase from any other manufacturer.**

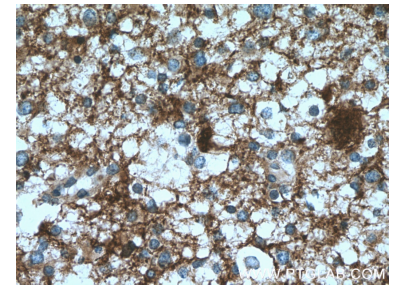
## Selected Validation Data



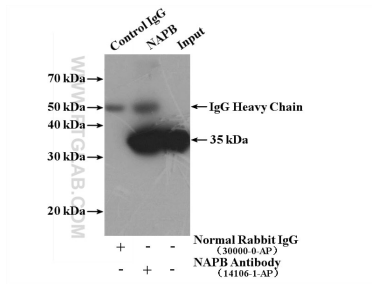
Various lysates were subjected to SDS PAGE followed by western blot with 14106-1-AP (NAPB antibody) at dilution of 1:5000 incubated at room temperature for 1.5 hours.



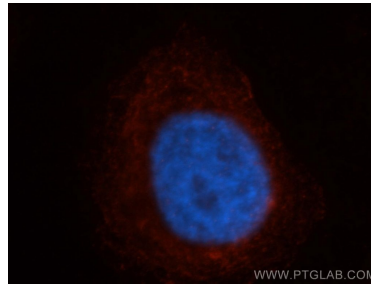
Immunohistochemical analysis of paraffin-embedded human gliomas tissue slide using 14106-1-AP (NAPB antibody) at dilution of 1:200 (under 10x lens. Heat mediated antigen retrieval with Tris-EDTA buffer (pH 9.0).



Immunohistochemical analysis of paraffin-embedded human gliomas tissue slide using 14106-1-AP (NAPB antibody) at dilution of 1:200 (under 40x lens. Heat mediated antigen retrieval with Tris-EDTA buffer (pH 9.0).



IP Result of anti-NAPB (IP:14106-1-AP, 4ug; Detection:14106-1-AP 1:1000) with mouse brain tissue lysate 4000ug.



Immunofluorescent analysis of HepG2 cells, using NAPB antibody 14106-1-AP at 1:50 dilution and Rhodamine-labeled goat anti-rabbit IgG (red). Blue pseudocolor = DAPI (fluorescent DNA dye).