

For Research Use Only

SEPHS2 Polyclonal antibody

Catalog Number: 14109-1-AP **1 Publications**



Basic Information

Catalog Number: 14109-1-AP	GenBank Accession Number: BC016643	Purification Method: Antigen affinity purification
Size: 150ul , Concentration: 500 µg/ml by Nanodrop;	GeneID (NCBI): 22928	Recommended Dilutions: WB 1:1000-1:4000 IHC 1:50-1:500
Source: Rabbit	Full Name: selenophosphate synthetase 2	
Isotype: IgG	Calculated MW: 47 kDa	
Immunogen Catalog Number: AG5255	Observed MW: 47-50 kDa	

Applications

Tested Applications:

IHC, WB, ELISA

Cited Applications:

IHC

Species Specificity:

human, mouse, rat

Cited Species:

human

Note-IHC: suggested antigen retrieval with *TE buffer pH 9.0*; (*) Alternatively, antigen retrieval may be performed with *citrate buffer pH 6.0*

Positive Controls:

WB : NCI-H1299 cells, mouse pancreas tissue, mouse adipose tissue, rat liver tissue

IHC : human breast cancer tissue, human liver cancer tissue, mouse pancreas tissue

Background Information

Notable Publications

Author	Pubmed ID	Journal	Application
Fengyan Wang	37293295	Front Med (Lausanne)	IHC

Storage

Storage:

Store at -20°C. Stable for one year after shipment.

Storage Buffer:

PBS with 0.02% sodium azide and 50% glycerol pH 7.3.

Aliquoting is unnecessary for -20°C storage

***** 20ul sizes contain 0.1%BSA**

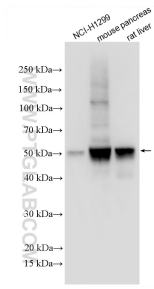
For technical support and original validation data for this product please contact:

T: 1 (888) 4PTGLAB (1-888-478-4522) (toll free in USA), or 1(312) 455-8498 (outside USA)

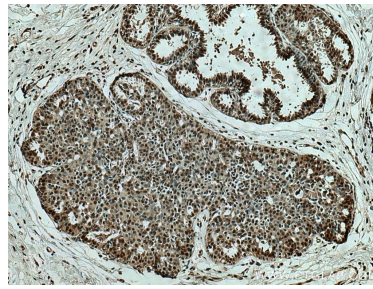
E: proteintech@ptglab.com
W: ptglab.com

This product is exclusively available under Proteintech Group brand and is not available to purchase from any other manufacturer.

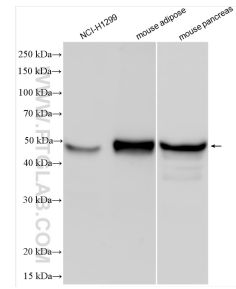
Selected Validation Data



Various lysates were subjected to SDS PAGE followed by western blot with 14109-1-AP (SEPHS2 antibody) at dilution of 1:2000 incubated at room temperature for 1.5 hours.



Immunohistochemical analysis of paraffin-embedded human breast cancer tissue slide using 14109-1-AP (SEPHS2 antibody) at dilution of 1:200 (under 10x lens). Heat mediated antigen retrieval with Tris-EDTA buffer (pH 9.0).



Various lysates were subjected to SDS PAGE followed by western blot with 14109-1-AP (SEPHS2 antibody) at dilution of 1:4000 incubated at room temperature for 1.5 hours.