

For Research Use Only

POLG Polyclonal antibody

Catalog Number: 14110-1-AP



Basic Information

Catalog Number:

14110-1-AP

Size:

150ul , Concentration: 450 ug/ml by Nanodrop;

Source:

Rabbit

Isotype:

IgG

Immunogen Catalog Number:

AG5256

GenBank Accession Number:

BC042571

GeneID (NCBI):

5428

UNIPROT ID:

P54098

Full Name:

polymerase (DNA directed), gamma

Calculated MW:

140 kDa

Observed MW:

130-150 kDa

Purification Method:

Antigen affinity purification

Recommended Dilutions:

WB 1:1000-1:4000

Applications

Tested Applications:

WB, ELISA

Species Specificity:

human

Positive Controls:

WB : A549 cells, HEK-293T cells, Jurkat cells

Background Information

POLG is the catalytic subunit of DNA polymerase gamma solely responsible for the replication of mitochondrial DNA (mtDNA). POLG replicates both heavy and light strands of the circular mtDNA genome using a single-stranded DNA template, RNA primers, and the four deoxyribonucleoside triphosphates as substrates (PMID:11477093; 11897778; 15917273; 19837034; 9558343).

Storage

Storage:

Store at -20°C. Stable for one year after shipment.

Storage Buffer:

PBS with 0.02% sodium azide and 50% glycerol pH 7.3.

Aliquoting is unnecessary for -20°C storage

*** 20ul sizes contain 0.1% BSA

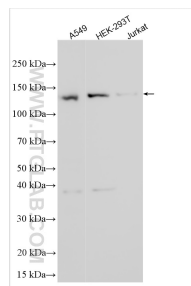
For technical support and original validation data for this product please contact:

T: 1 (888) 4PTGLAB (1-888-478-4522) (toll free in USA), or 1(312) 455-8498 (outside USA)

E: proteintech@ptglab.com
W: ptglab.com

This product is exclusively available under Proteintech Group brand and is not available to purchase from any other manufacturer.

Selected Validation Data



Various lysates were subjected to SDS PAGE followed by western blot with 14110-1-AP (POLG antibody) at dilution of 1:2000 incubated at room temperature for 1.5 hours.