

For Research Use Only

# POLG Polyclonal antibody, PBS Only

Catalog Number:14110-1-PBS



## Basic Information

<b>Catalog Number:</b> 14110-1-PBS	<b>GenBank Accession Number:</b> BC042571	<b>Purification Method:</b> Antigen affinity purification
<b>Size:</b> 100ug , Concentration: 1 mg/ml by Nanodrop;	<b>GeneID (NCBI):</b> 5428	
<b>Source:</b> Rabbit	<b>UNIPROT ID:</b> P54098	
<b>Isotype:</b> IgG	<b>Full Name:</b> polymerase (DNA directed), gamma	
<b>Immunogen Catalog Number:</b> AG5256	<b>Calculated MW:</b> 140 kDa	
	<b>Observed MW:</b> 130-150 kDa	

## Applications

**Tested Applications:**  
WB, Indirect ELISA

**Species Specificity:**  
human

## Background Information

POLG is the catalytic subunit of DNA polymerase gamma solely responsible for the replication of mitochondrial DNA (mtDNA). POLG replicates both heavy and light strands of the circular mtDNA genome using a single-stranded DNA template, RNA primers, and the four deoxyribonucleoside triphosphates as substrates (PMID:11477093; 11897778; 15917273; 19837034; 9558343).

## Storage

**Storage:**  
Store at -80°C.

**Storage Buffer:**  
PBS only, pH7.3

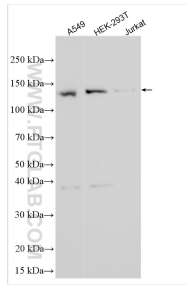
For technical support and original validation data for this product please contact:

T: 1 (888) 4PTGLAB (1-888-478-4522) (toll free in USA), or 1(312) 455-8498 (outside USA)

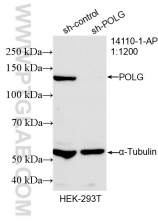
E: [proteintech@ptglab.com](mailto:proteintech@ptglab.com)  
W: [ptglab.com](http://ptglab.com)

**This product is exclusively available under Proteintech Group brand and is not available to purchase from any other manufacturer.**

## Selected Validation Data



Various lysates were subjected to SDS PAGE followed by western blot with 14110-1-AP (POLG antibody) at dilution of 1:2000 incubated at room temperature for 1.5 hours. This data was developed using the same antibody clone with 14110-1-PBS in a different storage buffer formulation.



WB result of POLG antibody (14110-1-AP; 1:1200; incubated at room temperature for 1.5 hours) with sh-Control and sh-POLG transfected HEK-293T cells. This data was developed using the same antibody clone with 14110-1-PBS in a different storage buffer formulation.