

For Research Use Only

# FOXR2 Polyclonal antibody

Catalog Number: 14111-1-AP

Featured Product

5 Publications



## Basic Information

### Catalog Number:

14111-1-AP

### Size:

150ul, Concentration: 700 ug/ml by Nanodrop;

### Source:

Rabbit

### Isotype:

IgG

### Immunogen Catalog Number:

AG5257

### GenBank Accession Number:

BC012934

### GeneID (NCBI):

139628

### UNIPROT ID:

Q6P1Q5

### Full Name:

forkhead box R2

### Calculated MW:

36 kDa

### Observed MW:

38 kDa

### Purification Method:

Antigen affinity purification

### Recommended Dilutions:

WB 1:500-1:2000

IF/ICC 1:50-1:500

## Applications

### Tested Applications:

WB, IF/ICC, ELISA

### Cited Applications:

WB, IHC, IF

### Species Specificity:

human, mouse

### Cited Species:

human, mouse

### Positive Controls:

WB : SH-SY5Y cells,

IF/ICC : SH-SY5Y cells,

## Notable Publications

Author	Pubmed ID	Journal	Application
Yangle Li	31761897	Med Sci Monit	WB
J Cai	32241159	Neoplasma	WB,IHC
Xiao Wang	26846213	Tumour Biol	WB,IHC

## Storage

### Storage:

Store at -20°C. Stable for one year after shipment.

### Storage Buffer:

PBS with 0.02% sodium azide and 50% glycerol pH 7.3.

Aliquoting is unnecessary for -20°C storage

\*\*\* 20ul sizes contain 0.1% BSA

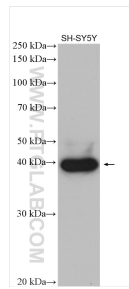
For technical support and original validation data for this product please contact:

T: 1 (888) 4PTGLAB (1-888-478-4522) (toll free in USA), or 1(312) 455-8498 (outside USA)

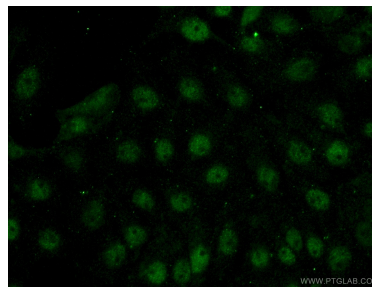
E: [proteintech@ptglab.com](mailto:proteintech@ptglab.com)  
W: [ptglab.com](http://ptglab.com)

This product is exclusively available under Proteintech Group brand and is not available to purchase from any other manufacturer.

## Selected Validation Data



SH-SY5Y cells were subjected to SDS PAGE followed by western blot with 14111-1-AP (FOXR2 antibody) at dilution of 1:1000 incubated at room temperature for 1.5 hours.



Immunofluorescent analysis of (-20°C Acetone) fixed SH-SY5Y cells using 14111-1-AP (FOXR2 antibody) at dilution of 1:50 and Alexa Fluor 488-conjugated Goat Anti-Rabbit IgG(H+L).