

For Research Use Only

# UBE2S Polyclonal antibody

Catalog Number: 14115-1-AP

Featured Product

10 Publications



## Basic Information

**Catalog Number:**

14115-1-AP

**Size:**

150ul, Concentration: 650 µg/ml by Nanodrop and 333 µg/ml by Bradford method using BSA as the standard;

**Source:**

Rabbit

**Isotype:**

IgG

**Immunogen Catalog Number:**

AG5264

**GenBank Accession Number:**

BC066948

**GeneID (NCBI):**

27338

**UNIPROT ID:**

Q16763

**Full Name:**

ubiquitin-conjugating enzyme E2S

**Calculated MW:**

222 aa, 24 kDa

**Observed MW:**

28 kDa

**Purification Method:**

Antigen affinity purification

**Recommended Dilutions:**

WB 1:1000-1:6000

IP 0.5-4.0 µg for 1.0-3.0 mg of total protein lysate

IHC 1:50-1:500

## Applications

**Tested Applications:**

WB, IP, FC, IHC, ELISA

**Cited Applications:**

WB, IF, IHC, CoIP

**Species Specificity:**

human, mouse, rat

**Cited Species:**

human, mouse

**Note-IHC: suggested antigen retrieval with TE buffer pH 9.0; (\*) Alternatively, antigen retrieval may be performed with citrate buffer pH 6.0**

**Positive Controls:**

**WB:** MCF-7 cells, HEK-293T cells, mouse liver tissue, A2780 cells, human liver tissue, MDA-MB-453s cells, HeLa cells, MOLT-4 cells, PC-3 cells, HEK-293 cells

**IP:** A2780 cells,

**IHC:** human liver cancer tissue, human breast cancer tissue, human skin tissue, human ovary tumor tissue

## Background Information

UBE2S (Ubiquitin-conjugating enzyme E2 S) is also named as E2EPF and belongs to the ubiquitin-conjugating enzyme family. It acts as an essential factor of the anaphase promoting complex/cyclosome (APC/C) and a cell cycle-regulated ubiquitin ligase that controls progression through mitosis. Overexpression of UBE2S can increase tumor cell proliferation, invasion, and metastasis through the VHL-HIF pathway (PMID:16819549).

## Notable Publications

Author	Pubmed ID	Journal	Application
Wenjing Hu	34535173	J Ovarian Res	WB,IHC
Shengmeng Peng	35637955	Int J Biol Sci	WB,IHC
Shusaku Yoshimura	28257844	Biochem Biophys Res Commun	WB,IHC

## Storage

**Storage:**

Store at -20°C. Stable for one year after shipment.

**Storage Buffer:**

PBS with 0.02% sodium azide and 50% glycerol pH 7.3.

Aliquoting is unnecessary for -20°C storage

\*\*\* 20ul sizes contain 0.1% BSA

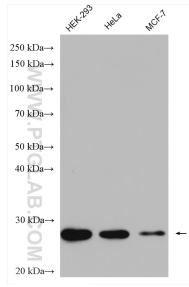
For technical support and original validation data for this product please contact:

T: 1 (888) 4PTGLAB (1-888-478-4522) (toll free in USA), or 1(312) 455-8498 (outside USA)

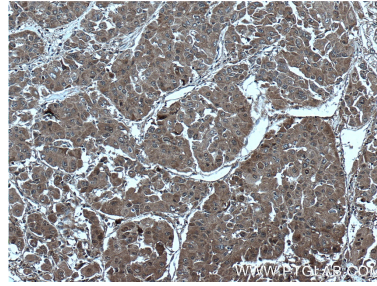
E: proteintech@ptglab.com  
W: ptglab.com

This product is exclusively available under Proteintech Group brand and is not available to purchase from any other manufacturer.

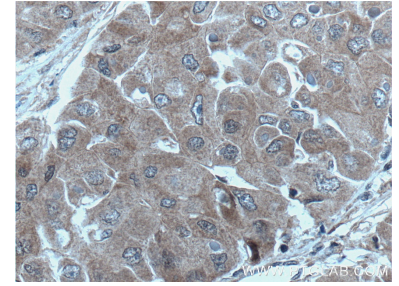
## Selected Validation Data



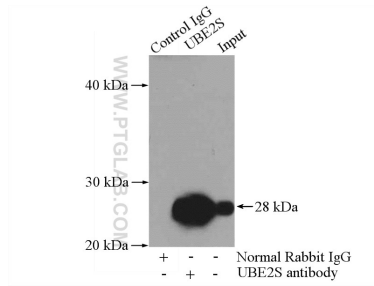
Various lysates were subjected to SDS PAGE followed by western blot with 14115-1-AP (UBE2S antibody) at dilution of 1:4000 incubated at room temperature for 1.5 hours.



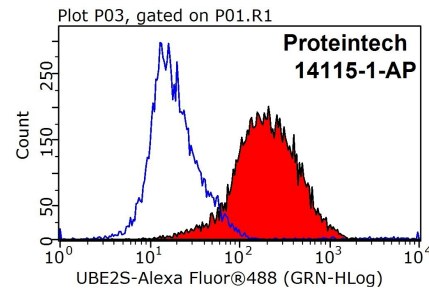
Immunohistochemical analysis of paraffin-embedded human liver cancer tissue slide using 14115-1-AP (UBE2S antibody) at dilution of 1:200 (under 10x lens. Heat mediated antigen retrieval with Tris-EDTA buffer (pH 9.0).



Immunohistochemical analysis of paraffin-embedded human liver cancer tissue slide using 14115-1-AP (UBE2S antibody) at dilution of 1:200 (under 40x lens. Heat mediated antigen retrieval with Tris-EDTA buffer (pH 9.0).



IP result of anti-UBE2S (IP:14115-1-AP, 4ug; Detection:14115-1-AP 1:1000) with A2780 cells lysate 960ug.



1x10<sup>6</sup> Jurkat cells were stained with 0.5ug UBE2S antibody (14115-1-AP, red) and control antibody (blue). Fixed with 90% MeOH blocked with 3% BSA (30 min). Alexa Fluor 488-conjugated AffiniPure Goat Anti-Rabbit IgG(H+L) with dilution 1:1000.