

For Research Use Only

ASPH Polyclonal antibody

Catalog Number: 14116-1-AP

Featured Product

3 Publications



Basic Information

Catalog Number: 14116-1-AP	GenBank Accession Number: BC066929	Purification Method: Antigen affinity purification
Size: 150ul , Concentration: 900 µg/ml by Nanodrop and 467 µg/ml by Bradford method using BSA as the standard;	GeneID (NCBI): 444	Recommended Dilutions: WB 1:200-1:1000 IHC 1:50-1:500
Source: Rabbit	Full Name: aspartate beta-hydroxylase	
Isotype: IgG	Calculated MW: 86 kDa	
Immunogen Catalog Number: AG5265	Observed MW: 26 kDa	

Applications

Tested Applications: IHC, WB, ELISA	Positive Controls:
Cited Applications: IHC, WB	WB : mouse brain tissue, A549 cells, human brain tissue
Species Specificity: human, mouse	IHC : human kidney tissue,
Cited Species: human, rat	

Note-IHC: suggested antigen retrieval with TE buffer pH 9.0; (*) Alternatively, antigen retrieval may be performed with citrate buffer pH 6.0

Background Information

Aspartate-β-hydroxylase (ASPH; termed AAH in older literature) has been implicated in the cross-talk among all of these signaling pathways. Correspondingly, ASPH is expressed at high levels in many malignant neoplasms of different histogeneses. It has the 86-141 kDa bands (native and phosphorylated forms), cleavage products of 35-56 and 22-26 kDa. (PMID:27981247/PMID: 10956665)

Notable Publications

Author	Pubmed ID	Journal	Application
Yujiao Zhou	30116759	J Immunol Res	WB
Michael Babich	35252607	Heliyon	WB, IHC
Qifei Zou	29764768	EBioMedicine	WB

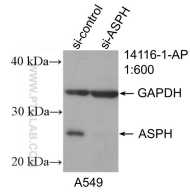
Storage

Storage:
Store at -20°C. Stable for one year after shipment.
Storage Buffer:
PBS with 0.02% sodium azide and 50% glycerol pH 7.3.
Aliquoting is unnecessary for -20°C storage

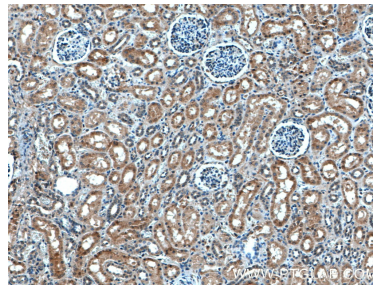
For technical support and original validation data for this product please contact:
T: 1 (888) 4PTGLAB (1-888-478-4522) (toll free in USA), or 1(312) 455-8498 (outside USA)
E: proteintech@ptglab.com
W: ptglab.com

This product is exclusively available under Proteintech Group brand and is not available to purchase from any other manufacturer.

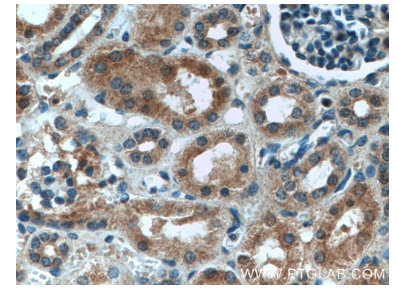
Selected Validation Data



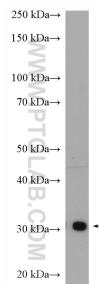
WB result of ASPH antibody (14116-1-AP; 1:600; incubated at room temperature for 1.5 hours) with sh-Control and sh-ASPH transfected A549 cells.



Immunohistochemical analysis of paraffin-embedded human kidney tissue slide using 14116-1-AP (ASPH antibody) at dilution of 1:200 (under 10x lens). Heat mediated antigen retrieval with Tris-EDTA buffer (pH 9.0).



Immunohistochemical analysis of paraffin-embedded human kidney tissue slide using 14116-1-AP (ASPH antibody) at dilution of 1:200 (under 40x lens). Heat mediated antigen retrieval with Tris-EDTA buffer (pH 9.0).



mouse brain tissue were subjected to SDS PAGE followed by western blot with 14116-1-AP (ASPH antibody) at dilution of 1:300 incubated at room temperature for 1.5 hours.