

For Research Use Only

RPL17 Polyclonal antibody

Catalog Number: 14121-1-AP **6 Publications**



Basic Information

Catalog Number: 14121-1-AP	GenBank Accession Number: BC066323	Purification Method: Antigen affinity purification
Size: 150ul , Concentration: 600 µg/ml by Nanodrop and 300 µg/ml by Bradford method using BSA as the standard;	GeneID (NCBI): 6139	Recommended Dilutions: WB 1:2000-1:10000 IP 0.5-4.0 ug for IP and 1:1000-1:4000 for WB IHC 1:50-1:500
Source: Rabbit	Full Name: ribosomal protein L17	
Isotype: IgG	Calculated MW: 21 kDa	
Immunogen Catalog Number: AG5270	Observed MW: 23 kDa	

Applications

Tested Applications: IHC, IP, WB, ELISA	Positive Controls: WB : HeLa cells, HepG2 cells, mouse pancreas tissue, rat pancreas tissue IP : HeLa cells, IHC : human pancreas cancer tissue,
Cited Applications: IF, WB	
Species Specificity: human, mouse, rat	
Cited Species: human, mouse	
Note-IHC: suggested antigen retrieval with TE buffer pH 9.0; (*) Alternatively, antigen retrieval may be performed with citrate buffer pH 6.0	

Background Information

Ribosomes, the organelles that catalyze protein synthesis, consist of a small 40S subunit and a large 60S subunit. Together these subunits are composed of 4 RNA species and approximately 80 structurally distinct proteins. RPL17 gene encodes a ribosomal protein that is a component of the 60S subunit belonging to the L22P family of ribosomal proteins. It is located in the cytoplasm. This gene has been referred to as rpl23 because the encoded protein shares amino acid identity with ribosomal protein L23 from *Halobacterium marismortui*; however, its official symbol is RPL17.

Notable Publications

Author	Pubmed ID	Journal	Application
Xiaoyu Zhang	27322069	Nat Chem Biol	WB
Eriko Matsuura-Suzuki	35674491	Elife	WB
Martin Gamerdinger	31377116	Mol Cell	WB

Storage

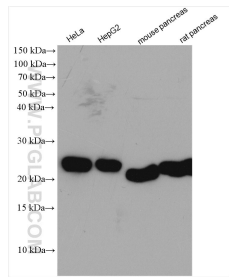
Storage:
Store at -20°C. Stable for one year after shipment.
Storage Buffer:
PBS with 0.02% sodium azide and 50% glycerol pH 7.3.
Aliquoting is unnecessary for -20°C storage

*** 20ul sizes contain 0.1% BSA

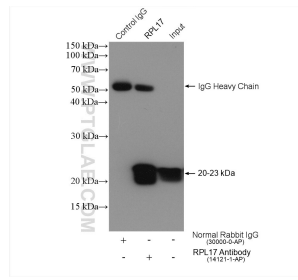
For technical support and original validation data for this product please contact:
T: 1 (888) 4PTGLAB (1-888-478-4522) (toll free in USA), or 1(312) 455-8498 (outside USA)
E: proteintech@ptglab.com
W: ptglab.com

This product is exclusively available under Proteintech Group brand and is not available to purchase from any other manufacturer.

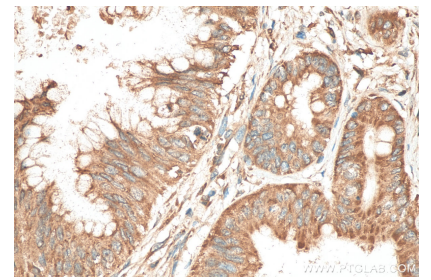
Selected Validation Data



HeLa cells were subjected to SDS PAGE followed by western blot with 14121-1-AP (RPL17 antibody) at dilution of 1:5000 incubated at room temperature for 1.5 hours.



IP result of anti-RPL17(IP:14121-1-AP, 4ug; Detection:14121-1-AP 1:2000) with HeLa cells lysate 1080 ug.



Immunohistochemical analysis of paraffin-embedded human pancreas cancer tissue slide using 14121-1-AP (RPL17 antibody) at dilution of 1:200 (under 40x lens). Heat mediated antigen retrieval with Tris-EDTA buffer (pH 9.0).