

For Research Use Only

# CDC26 Polyclonal antibody

Catalog Number: 14125-1-AP

1 Publications



## Basic Information

<b>Catalog Number:</b> 14125-1-AP	<b>GenBank Accession Number:</b> BC066300	<b>Purification Method:</b> Antigen affinity purification
<b>Size:</b> 150ul , Concentration: 2000 ug/ml by Nanodrop and 580 ug/ml by Bradford method using BSA as the standard;	<b>GeneID (NCBI):</b> 246184	<b>Recommended Dilutions:</b> WB 1:500-1:2000 IHC 1:20-1:200
<b>Source:</b> Rabbit	<b>UNIPROT ID:</b> Q8NHZ8	
<b>Isotype:</b> IgG	<b>Full Name:</b> cell division cycle 26 homolog (S. cerevisiae)	
<b>Immunogen Catalog Number:</b> AG5276	<b>Calculated MW:</b> 10 kDa	
	<b>Observed MW:</b> 10 kDa	

## Applications

<b>Tested Applications:</b> WB, IHC, ELISA	<b>Positive Controls:</b>
<b>Cited Applications:</b> IF	<b>WB :</b> HeLa cells,
<b>Species Specificity:</b> human, mouse, rat	<b>IHC :</b> mouse brain tissue,
<b>Cited Species:</b> human	
<b>Note-IHC: suggested antigen retrieval with TE buffer pH 9.0; (*) Alternatively, antigen retrieval may be performed with citrate buffer pH 6.0</b>	

## Background Information

CDC26, also named as ANAPC12, APC12 and C9orf17, is a component of the anaphase promoting complex/cyclosome (APC/C). CDC26 can be detected as 14 kDa and ~18 kDa (PMID: 15060174 / PMID: 10222126).

## Notable Publications

Author	Pubmed ID	Journal	Application
Kyungsoo Ha	28604711	Nat Commun	IF

## Storage

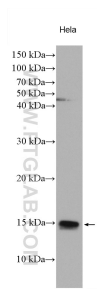
**Storage:**  
Store at -20°C. Stable for one year after shipment.  
**Storage Buffer:**  
PBS with 0.02% sodium azide and 50% glycerol pH 7.3.  
Aliquoting is unnecessary for -20°C storage

\*\*\* 20ul sizes contain 0.1% BSA

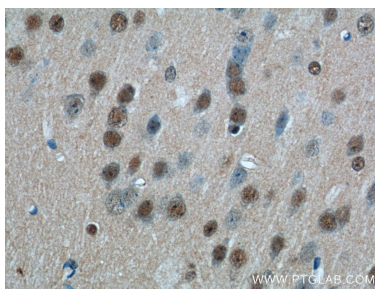
For technical support and original validation data for this product please contact:  
T: 1 (888) 4PTGLAB (1-888-478-4522) (toll free in USA), or 1(312) 455-8498 (outside USA)  
E: proteintech@ptglab.com  
W: ptglab.com

This product is exclusively available under Proteintech Group brand and is not available to purchase from any other manufacturer.

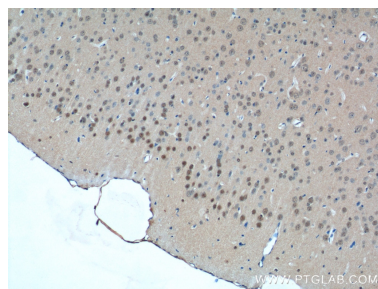
Selected Validation Data



HeLa cells were subjected to SDS PAGE followed by western blot with 14125-1-AP (CDC26 antibody) at dilution of 1:1000 incubated at room temperature for 1.5 hours.



Immunohistochemical analysis of paraffin-embedded mouse brain tissue slide using 14125-1-AP (CDC26 Antibody) at dilution of 1:50 (under 40x lens).



Immunohistochemical analysis of paraffin-embedded mouse brain tissue slide using 14125-1-AP (CDC26 Antibody) at dilution of 1:50 (under 10x lens).