

For Research Use Only

GFPT1 Polyclonal antibody

Catalog Number: 14132-1-AP

Featured Product

25 Publications



Basic Information

Catalog Number: 14132-1-AP	GenBank Accession Number: BC045641	Purification Method: Antigen affinity purification
Size: 150ul , Concentration: 300 µg/ml by Nanodrop and 287 µg/ml by Bradford method using BSA as the standard;	GeneID (NCBI): 2673	Recommended Dilutions: WB 1:500-1:1000 IHC 1:50-1:500 IF 1:20-1:200
Source: Rabbit	Full Name: glutamine-fructose-6-phosphate transaminase 1	
Isotype: IgG	Calculated MW: 681 aa, 77 kDa	
Immunogen Catalog Number: AG5312	Observed MW: 77 kDa	

Applications

Tested Applications: IF, IHC, WB, ELISA	Positive Controls: WB : human skeletal muscle tissue, HepG2 cells IHC : human gliomas tissue, human hepatocirrhosis tissue IF : HepG2 cells,
Cited Applications: CoIP, IF, IHC, IP, WB	
Species Specificity: human, mouse, rat	
Cited Species: human, rat, mouse, zebrafish	
Note-IHC: suggested antigen retrieval with TE buffer pH 9.0; (*) Alternatively, antigen retrieval may be performed with citrate buffer pH 6.0	

Background Information

GFPT1 (glutamine-fructose-6-phosphate transaminase 1) catalyzes the transfer of an amino group from glutamine onto fructose-6-phosphate, yielding glucosamine-6-phosphate (GlcN-6-P) and glutamate. GFPT1 is the key enzyme of the hexosamine pathway and is required for critical events in neuromuscular transmission. Mutations of GFPT1 cause congenital myasthenic syndromes (CMS). (21310273, 25765662)

Notable Publications

Author	Pubmed ID	Journal	Application
Tanjing Song	34551297	Cell Rep	WB
Yong Huang	32938225	Am J Physiol Cell Physiol	WB
Weiwei Dai	30254013	Biochim Biophys Acta Mol Basis Dis	WB

Storage

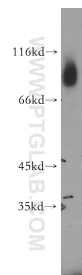
Storage:
Store at -20°C. Stable for one year after shipment.
Storage Buffer:
PBS with 0.02% sodium azide and 50% glycerol pH 7.3.
Aliquoting is unnecessary for -20°C storage

*** 20ul sizes contain 0.1% BSA

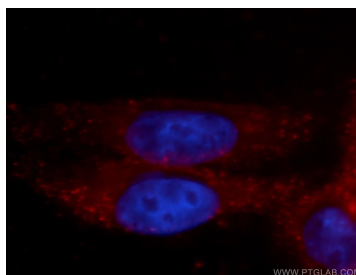
For technical support and original validation data for this product please contact:
T: 1 (888) 4PTGLAB (1-888-478-4522) (toll free in USA), or 1(312) 455-8498 (outside USA)
E: proteintech@ptglab.com
W: ptglab.com

This product is exclusively available under Proteintech Group brand and is not available to purchase from any other manufacturer.

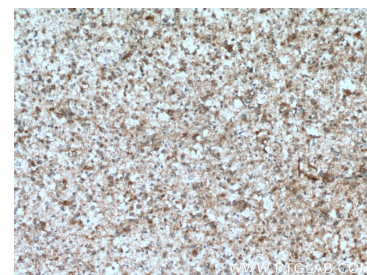
Selected Validation Data



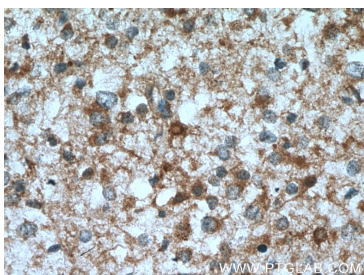
human skeletal muscle tissue were subjected to SDS PAGE followed by western blot with 14132-1-AP (GFPT1 antibody) at dilution of 1:500 incubated at room temperature for 1.5 hours.



Immunofluorescent analysis of HepG2 cells, using GFPT1 antibody 14132-1-AP at 1:100 dilution and PE-labeled goat anti-rabbit IgG (red). Blue pseudocolor = DAPI (fluorescent DNA dye).



Immunohistochemical analysis of paraffin-embedded human gliomas tissue slide using 14132-1-AP (GFPT1 antibody) at dilution of 1:200 (under 10x lens. Heat mediated antigen retrieval with Tris-EDTA buffer (pH 9.0).



Immunohistochemical analysis of paraffin-embedded human gliomas tissue slide using 14132-1-AP (GFPT1 antibody) at dilution of 1:200 (under 40x lens. Heat mediated antigen retrieval with Tris-EDTA buffer (pH 9.0).