

For Research Use Only

GFPT1 Polyclonal antibody, PBS Only

Catalog Number: 14132-1-PBS

Featured Product



Basic Information

Catalog Number:

14132-1-PBS

Size:

100ug, Concentration: 1 mg/ml by Nanodrop;

Source:

Rabbit

Isotype:

IgG

Immunogen Catalog Number:

AG5312

GenBank Accession Number:

BC045641

GeneID (NCBI):

2673

UNIPROT ID:

Q06210

Full Name:

glutamine-fructose-6-phosphate transaminase 1

Calculated MW:

681 aa, 77 kDa

Observed MW:

77 kDa

Purification Method:

Antigen affinity purification

Applications

Tested Applications:

WB, IHC, IF/ICC, IP, Indirect ELISA

Species Specificity:

human, mouse, rat

Background Information

GFPT1 (glutamine-fructose-6-phosphate transaminase 1) catalyzes the transfer of an amino group from glutamine onto fructose-6-phosphate, yielding glucosamine-6-phosphate (GlcN-6-P) and glutamate. GFPT1 is the key enzyme of the hexosamine pathway and is required for critical events in neuromuscular transmission. Mutations of GFPT1 cause congenital myasthenic syndromes (CMS). (21310273, 25765662)

Storage

Storage:

Store at -80°C.

Storage Buffer:

PBS only, pH7.3

For technical support and original validation data for this product please contact:

T: 1 (888) 4PTGLAB (1-888-478-4522) (toll free in USA), or 1(312) 455-8498 (outside USA)

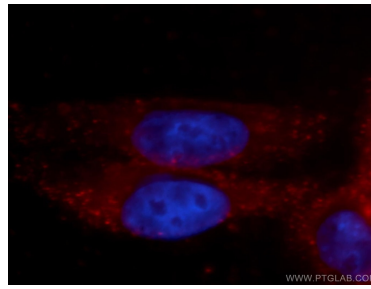
E: proteintech@ptglab.com
W: ptglab.com

This product is exclusively available under Proteintech Group brand and is not available to purchase from any other manufacturer.

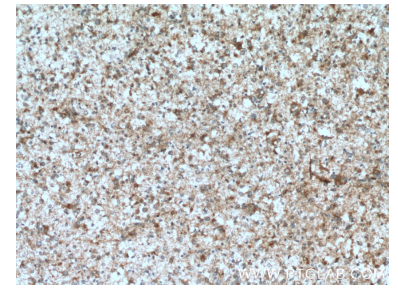
Selected Validation Data



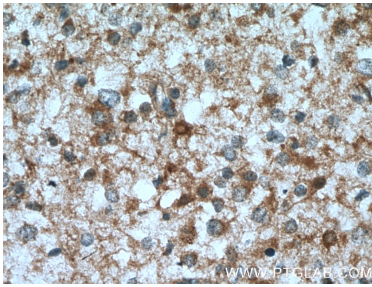
human skeletal muscle tissue were subjected to SDS PAGE followed by western blot with 14132-1-AP (GFPT1 antibody) at dilution of 1:500 incubated at room temperature for 1.5 hours. This data was developed using the same antibody clone with 14132-1-PBS in a different storage buffer formulation.



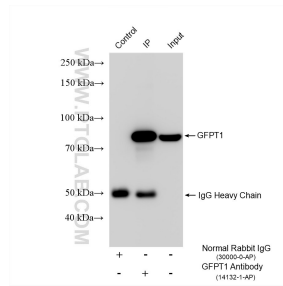
Immunofluorescent analysis of HepG2 cells, using GFPT1 antibody 14132-1-AP at 1:100 dilution and PE-labeled goat anti-rabbit IgG (red). Blue pseudocolor = DAPI (fluorescent DNA dye). This data was developed using the same antibody clone with 14132-1-PBS in a different storage buffer formulation.



Immunohistochemical analysis of paraffin-embedded human gliomas tissue slide using 14132-1-AP (GFPT1 antibody) at dilution of 1:200 (under 10x lens. Heat mediated antigen retrieval with Tris-EDTA buffer (pH 9.0). This data was developed using the same antibody clone with 14132-1-PBS in a different storage buffer formulation.



Immunohistochemical analysis of paraffin-embedded human gliomas tissue slide using 14132-1-AP (GFPT1 antibody) at dilution of 1:200 (under 40x lens. Heat mediated antigen retrieval with Tris-EDTA buffer (pH 9.0). This data was developed using the same antibody clone with 14132-1-PBS in a different storage buffer formulation.



IP result of anti-GFPT1 (IP:14132-1-AP, 4ug; Detection:14132-1-AP 1:3000) with HepG2 cells lysate 1600 ug. This data was developed using the same antibody clone with 14132-1-PBS in a different storage buffer formulation.