

For Research Use Only

Synaptoporin Polyclonal antibody

Catalog Number: 14143-1-AP **2 Publications**



Basic Information

Catalog Number: 14143-1-AP	GenBank Accession Number: BC022518	Purification Method: Antigen affinity purification
Size: 150ul , Concentration: 350 µg/ml by Nanodrop and 293 µg/ml by Bradford method using BSA as the standard;	GeneID (NCBI): 132204	Recommended Dilutions: WB 1:1000-1:6000 IP 0.5-4.0 ug for IP and 1:500-1:1000 for WB
Source: Rabbit	Full Name: synaptoporin	IHC 1:200-1:800
Isotype: IgG	Calculated MW: 265 aa, 29 kDa	
Immunogen Catalog Number: AG5307	Observed MW: 37 kDa	

Applications

Tested Applications: IHC, IP, WB, ELISA	Positive Controls:
Cited Applications: IF	WB: mouse brain tissue, human brain tissue, mouse cerebellum tissue, rat brain tissue
Species Specificity: human, mouse, rat	IP: mouse brain tissue,
Cited Species: mouse	IHC: mouse brain tissue, human colon tissue, human gliomas tissue, human brain tissue
Note-IHC: suggested antigen retrieval with TE buffer pH 9.0; (*) Alternatively, antigen retrieval may be performed with citrate buffer pH 6.0	

Background Information

Notable Publications

Author	Pubmed ID	Journal	Application
Luisa Speranza	36359212	Biomedicines	IF
Limin Ma	37302990	CNS Neurosci Ther	IF

Storage

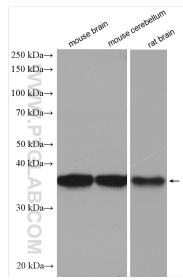
Storage:
Store at -20°C. Stable for one year after shipment.
Storage Buffer:
PBS with 0.02% sodium azide and 50% glycerol pH 7.3.
Aliquoting is unnecessary for -20°C storage

*** 20ul sizes contain 0.1% BSA

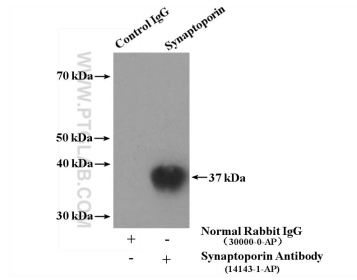
For technical support and original validation data for this product please contact:
T: 1 (888) 4PTGLAB (1-888-478-4522) (toll free in USA), or 1(312) 455-8498 (outside USA)
E: proteintech@ptglab.com
W: ptglab.com

This product is exclusively available under Proteintech Group brand and is not available to purchase from any other manufacturer.

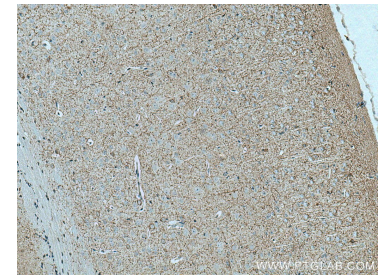
Selected Validation Data



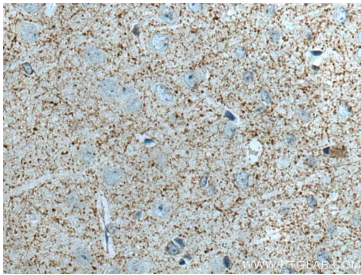
Various lysates were subjected to SDS PAGE followed by western blot with 14143-1-AP (Synaptoporin antibody) at dilution of 1:3000 incubated at room temperature for 1.5 hours.



IP Result of anti-Synaptoporin (IP:14143-1-AP, 4 μ g; Detection:14143-1-AP 1:500) with mouse brain tissue lysate 5200 μ g.



Immunohistochemical analysis of paraffin-embedded mouse brain tissue slide using 14143-1-AP (Synaptoporin antibody) at dilution of 1:400 (under 10x lens). Heat mediated antigen retrieval with Tris-EDTA buffer (pH 9.0).



Immunohistochemical analysis of paraffin-embedded mouse brain tissue slide using 14143-1-AP (Synaptoporin antibody) at dilution of 1:400 (under 40x lens). Heat mediated antigen retrieval with Tris-EDTA buffer (pH 9.0).