

For Research Use Only

# LMX1A Polyclonal antibody

Catalog Number: 14144-1-AP



## Basic Information

### Catalog Number:

14144-1-AP

### Size:

150ul, Concentration: 700 ug/ml by Nanodrop and 367 ug/ml by Bradford method using BSA as the standard;

### Source:

Rabbit

### Isotype:

IgG

### Immunogen Catalog Number:

AG5311

### GenBank Accession Number:

BC066353

### GeneID (NCBI):

4009

### UNIPROT ID:

Q8TE12

### Full Name:

LIM homeobox transcription factor 1, alpha

### Calculated MW:

43 kDa

### Observed MW:

43 kDa

### Purification Method:

Antigen affinity purification

### Recommended Dilutions:

WB 1:500-1:1000

## Applications

### Tested Applications:

WB, ELISA

### Species Specificity:

mouse, rat

### Positive Controls:

WB : mouse brain tissue, rat brain tissue

## Background Information

LMX1A is a transcription factor that positively regulates insulin gene transcription. LMX1A also plays a role in the development of dopamine-producing neurons during embryogenesis (PMID: 36381759). LMX1A has 2 isoforms with the molecular mass of 15 kDa (LMX1A-4AB) and 43 kDa (Isoform 1). LMX1A-4AB is expressed in testis. Isoform 1 of LMX1A is expressed in many tissues but not found in heart, liver, spleen and testis.

## Storage

### Storage:

Store at -20°C. Stable for one year after shipment.

### Storage Buffer:

PBS with 0.02% sodium azide and 50% glycerol pH 7.3.

Aliquoting is unnecessary for -20°C storage

\*\*\* 20ul sizes contain 0.1% BSA

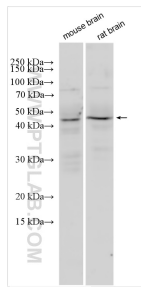
For technical support and original validation data for this product please contact:

T: 1 (888) 4PTGLAB (1-888-478-4522) (toll free in USA), or 1(312) 455-8498 (outside USA)

E: [proteintech@ptglab.com](mailto:proteintech@ptglab.com)  
W: [ptglab.com](http://ptglab.com)

This product is exclusively available under Proteintech Group brand and is not available to purchase from any other manufacturer.

## Selected Validation Data



Various lysates were subjected to SDS PAGE followed by western blot with 14144-1-AP (LMX1A antibody) at dilution of 1:600 incubated at room temperature for 1.5 hours.