

For Research Use Only

# RP2 Polyclonal antibody

Catalog Number: 14151-1-AP **2 Publications**



## Basic Information

<b>Catalog Number:</b> 14151-1-AP	<b>GenBank Accession Number:</b> BC043348	<b>Purification Method:</b> Antigen affinity purification
<b>Size:</b> 150ul , Concentration: 350 µg/ml by Nanodrop and 207 µg/ml by Bradford method using BSA as the standard;	<b>GeneID (NCBI):</b> 6102	<b>Recommended Dilutions:</b> WB 1:500-1:2000 IP 0.5-4.0 ug for IP and 1:500-1:1000 for WB
<b>Source:</b> Rabbit	<b>Full Name:</b> retinitis pigmentosa 2 (X-linked recessive)	<b>IHC 1:50-1:500</b>
<b>Isotype:</b> IgG	<b>Calculated MW:</b> 350 aa, 40 kDa	
<b>Immunogen Catalog Number:</b> AG5332	<b>Observed MW:</b> 37-40 kDa	

## Applications

<b>Tested Applications:</b> FC, IHC, IP, WB, ELISA	<b>Positive Controls:</b>
<b>Cited Applications:</b> IHC, WB	<b>WB :</b> HepG2 cells, Jurkat cells, Y79 cells, mouse liver tissue
<b>Species Specificity:</b> human, mouse, rat	<b>IP :</b> Y79 cells,
<b>Cited Species:</b> mouse	<b>IHC :</b> human liver cancer tissue,

**Note-IHC: suggested antigen retrieval with TE buffer pH 9.0; (\*) Alternatively, antigen retrieval may be performed with citrate buffer pH 6.0**

## Background Information

### Notable Publications

Author	Pubmed ID	Journal	Application
Tess A V Afanasyeva	34420069	Cell Mol Life Sci	IHC
Stefan Kurtenbach	28814779	Sci Rep	WB

## Storage

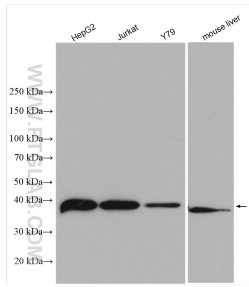
**Storage:**  
Store at -20°C. Stable for one year after shipment.  
**Storage Buffer:**  
PBS with 0.02% sodium azide and 50% glycerol pH 7.3.  
Aliquoting is unnecessary for -20°C storage

**\*\*\* 20ul sizes contain 0.1% BSA**

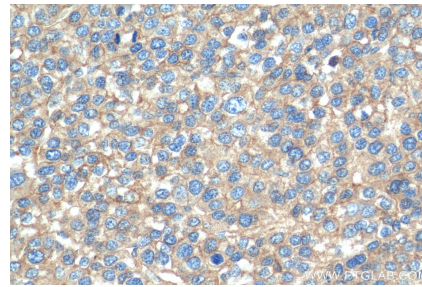
For technical support and original validation data for this product please contact:  
T: 1 (888) 4PTGLAB (1-888-478-4522) (toll free in USA), or 1(312) 455-8498 (outside USA)  
E: proteintech@ptglab.com  
W: ptglab.com

**This product is exclusively available under Proteintech Group brand and is not available to purchase from any other manufacturer.**

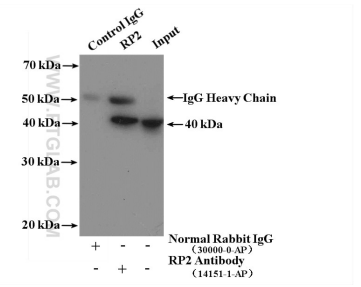
## Selected Validation Data



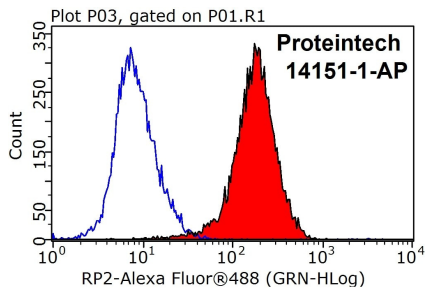
Various lysates were subjected to SDS PAGE followed by western blot with 14151-1-AP (RP2 antibody) at dilution of 1:1000 incubated at room temperature for 1.5 hours.



Immunohistochemical analysis of paraffin-embedded human liver cancer tissue slide using 14151-1-AP (RP2 antibody) at dilution of 1:200 (under 40x lens). Heat mediated antigen retrieval with Tris-EDTA buffer (pH 9.0).



IP Result of anti-RP2 (IP:14151-1-AP, 4ug; Detection:14151-1-AP 1:500) with Y79 cells lysate 2000ug.



1X10<sup>6</sup> HeLa cells were stained with 0.2ug RP2 antibody (14151-1-AP, red) and control antibody (blue). Fixed with 90% MeOH blocked with 3% BSA (30 min). Alexa Fluor 488-conjugated AffiniPure Goat Anti-Rabbit IgG(H+L) with dilution 1:1000.