

For Research Use Only

# SLA2 Polyclonal antibody

Catalog Number: 14152-1-AP



## Basic Information

### Catalog Number:

14152-1-AP

### Size:

150ul , Concentration: 450 ug/ml by Nanodrop;

### Source:

Rabbit

### Isotype:

IgG

### Immunogen Catalog Number:

AG5334

### GenBank Accession Number:

BC042041

### GeneID (NCBI):

84174

### UNIPROT ID:

Q9H6Q3

### Full Name:

Src-like-adaptor 2

### Calculated MW:

261 aa, 29 kDa

### Observed MW:

28-30 kDa

### Purification Method:

Antigen affinity purification

### Recommended Dilutions:

WB 1:500-1:2000

## Applications

### Tested Applications:

WB, ELISA

### Species Specificity:

human

### Positive Controls:

WB : human peripheral blood platelets,

## Background Information

SLA2 is an adapter protein, which negatively regulates T-cell receptor (TCR) signaling. It inhibits T-cell antigen-receptor-induced activation of nuclear factor of activated T-cells and may act by linking signaling proteins such as ZAP70 with CBL, leading to a CBL-dependent degradation of signaling proteins (PMID: 11696592).

## Storage

### Storage:

Store at -20°C. Stable for one year after shipment.

### Storage Buffer:

PBS with 0.02% sodium azide and 50% glycerol pH 7.3.

Aliquoting is unnecessary for -20°C storage

\*\*\* 20ul sizes contain 0.1% BSA

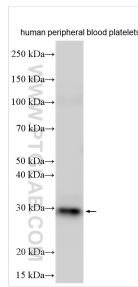
For technical support and original validation data for this product please contact:

T: 1 (888) 4PTGLAB (1-888-478-4522) (toll free in USA), or 1(312) 455-8498 (outside USA)

E: [proteintech@ptglab.com](mailto:proteintech@ptglab.com)  
W: [ptglab.com](http://ptglab.com)

This product is exclusively available under Proteintech Group brand and is not available to purchase from any other manufacturer.

## Selected Validation Data



Various lysates were subjected to SDS PAGE followed by western blot with 14152-1-AP (SLA2 antibody) at dilution of 1:1000 incubated at room temperature for 1.5 hours.