

For Research Use Only

SLA2 Polyclonal antibody, PBS Only

Catalog Number: 14152-1-PBS



Basic Information

Catalog Number: 14152-1-PBS	GenBank Accession Number: BC042041	Purification Method: Antigen affinity purification
Size: 100ug , Concentration: 1 mg/ml by Nanodrop;	GeneID (NCBI): 84174	
Source: Rabbit	UNIPROT ID: Q9H6Q3	
Isotype: IgG	Full Name: Src-like-adaptor 2	
Immunogen Catalog Number: AG5334	Calculated MW: 261 aa, 29 kDa	
	Observed MW: 28-30 kDa	

Applications

Tested Applications:
WB, Indirect ELISA

Species Specificity:
human

Background Information

SLA2 is an adapter protein, which negatively regulates T-cell receptor (TCR) signaling. It inhibits T-cell antigen-receptor-induced activation of nuclear factor of activated T-cells and may act by linking signaling proteins such as ZAP70 with CBL, leading to a CBL-dependent degradation of signaling proteins (PMID: 11696592).

Storage

Storage:
Store at -80°C.

Storage Buffer:
PBS Only

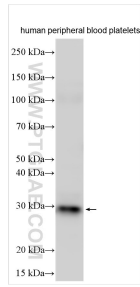
For technical support and original validation data for this product please contact:

T: 1 (888) 4PTGLAB (1-888-478-4522) (toll free
in USA), or 1(312) 455-8498 (outside USA)

E: proteintech@ptglab.com
W: ptglab.com

This product is exclusively available under Proteintech Group brand and is not available to purchase from any other manufacturer.

Selected Validation Data



Various lysates were subjected to SDS PAGE followed by western blot with 14152-1-AP (SLA2 antibody) at dilution of 1:1000 incubated at room temperature for 1.5 hours. This data was developed using the same antibody clone with 14152-1-PBS in a different storage buffer formulation.