

For Research Use Only

LILRB2 Polyclonal antibody

Catalog Number: 14154-1-AP



Basic Information

Catalog Number:

14154-1-AP

Size:

150ul , Concentration: 500 ug/ml by Nanodrop;

Source:

Rabbit

Isotype:

IgG

Immunogen Catalog Number:

AG5336

GenBank Accession Number:

BC036827

GeneID (NCBI):

10288

UNIPROT ID:

Q8N423

Full Name:

leukocyte immunoglobulin-like receptor, subfamily B (with TM and ITIM domains), member 2

Calculated MW:

598 aa, 65 kDa

Observed MW:

60-65 kDa

Purification Method:

Antigen affinity purification

Recommended Dilutions:

WB 1:500-1:3000

IF/ICC 1:50-1:500

Applications

Tested Applications:

WB, IF/ICC, ELISA

Species Specificity:

human

Positive Controls:

WB : HeLa cells, Jurkat cells, THP-1 cells

IF/ICC : THP-1 cells,

Background Information

LILRB2 (Leukocyte immunoglobulin-like receptor subfamily B member 2), also known as ILT4, CD85d or MIR10, is a type I transmembrane glycoprotein that contains four extracellular immunoglobulin domains, a transmembrane domain, and three cytoplasmic immunoreceptor tyrosine-based inhibitory motifs (ITIMs) (PMID: 33928233). LILRB2 is mainly expressed in immunocytes including monocytes, macrophages, and dendritic cells, and transduces negative signals by its association with SHP-1 phosphatase via the ITIMs (PMID: 35717259). LILRB2 can interact with various ligands such as HLA-A, HLA-B, HLA-C, HLA-G, HLA-F, CD1c, CD1d, angiopoietin-like proteins (ANGPTLs), and SEMA4A.

Storage

Storage:

Store at -20°C. Stable for one year after shipment.

Storage Buffer:

PBS with 0.02% sodium azide and 50% glycerol pH 7.3.

Aliquoting is unnecessary for -20°C storage

*** 20ul sizes contain 0.1% BSA

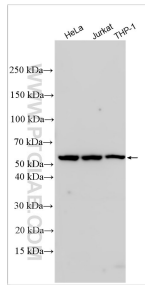
For technical support and original validation data for this product please contact:

T: 1 (888) 4PTGLAB (1-888-478-4522) (toll free in USA), or 1(312) 455-8498 (outside USA)

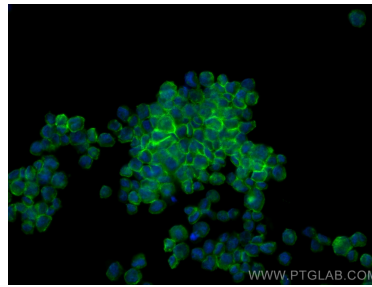
E: proteintech@ptglab.com
W: ptglab.com

This product is exclusively available under Proteintech Group brand and is not available to purchase from any other manufacturer.

Selected Validation Data



Various lysates were subjected to SDS PAGE followed by western blot with 14154-1-AP (LILRB2 antibody) at dilution of 1:1500 incubated at room temperature for 1.5 hours.



Immunofluorescent analysis of (4% PFA) fixed THP-1 cells using LILRB2 antibody (14154-1-AP) at dilution of 1:200 and CoraLite®488-Conjugated Goat Anti-Rabbit IgG(H+L) (SA00013-2).