

For Research Use Only

SLC26A11 Polyclonal antibody

Catalog Number: 14156-1-AP



Basic Information

Catalog Number: 14156-1-AP	GenBank Accession Number: BC035900	Purification Method: Antigen affinity purification
Size: 150ul , Concentration: 850 µg/ml by Nanodrop;	GeneID (NCBI): 284129	Recommended Dilutions: WB 1:500-1:1000 IHC 1:50-1:500
Source: Rabbit	Full Name: solute carrier family 26, member 11	
Isotype: IgG	Calculated MW: 606 aa, 65 kDa	
Immunogen Catalog Number: AG5338	Observed MW: 65-72 kDa	

Applications

Tested Applications:

IHC, WB, ELISA

Species Specificity:

human, mouse

Note-IHC: suggested antigen retrieval with TE buffer pH 9.0; (*) Alternatively, antigen retrieval may be performed with citrate buffer pH 6.0

Positive Controls:

WB: mouse brain tissue, unboiled mouse brain tissue, mouse kidney tissue, unboiled mouse kidney tissue

IHC: mouse cerebellum tissue,

Background Information

SLC26A11 is a sodium-independent sulfate transporter from high endothelial venules (PMID: 12626430). SLC26A11 exhibits sodium-independent sulfate anion transporter activity that may cooperate with SLC26A2 to mediate DIDS-sensitive sulfate uptake into high endothelial venules endothelial cells (HEVEC) (PMID: 12626430). SLC26A11 is critical for inhibitory transmission and contributes to locomotor coordination in purkinje cells (PMID: 27390771). SLC26A11, a chloride transporter, localizes with the vacuolar H⁺-ATPase of A-intercalated cells of the kidney and can be detected 72kDa (PMID: 21716257).

Storage

Storage:

Store at -20°C. Stable for one year after shipment.

Storage Buffer:

PBS with 0.02% sodium azide and 50% glycerol pH 7.3.

Aliquoting is unnecessary for -20°C storage

*** 20ul sizes contain 0.1% BSA

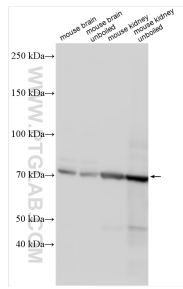
For technical support and original validation data for this product please contact:

T: 1 (888) 4PTGLAB (1-888-478-4522) (toll free in USA), or 1(312) 455-8498 (outside USA)

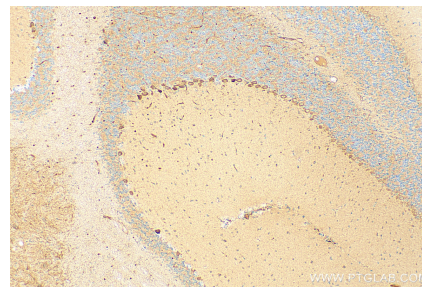
E: proteintech@ptglab.com
W: ptglab.com

This product is exclusively available under Proteintech Group brand and is not available to purchase from any other manufacturer.

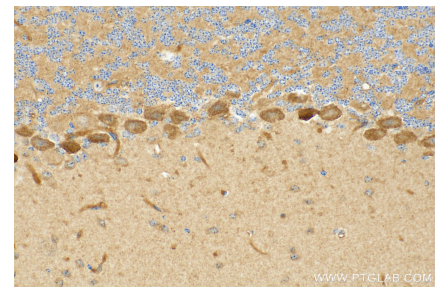
Selected Validation Data



Various lysates were subjected to SDS PAGE followed by western blot with 14156-1-AP (SLC26A11 antibody) at dilution of 1:500 incubated at room temperature for 1.5 hours.



Immunohistochemical analysis of paraffin-embedded mouse cerebellum tissue slide using 14156-1-AP (SLC26A11 antibody) at dilution of 1:200 (under 10x lens). Heat mediated antigen retrieval with .



Immunohistochemical analysis of paraffin-embedded mouse cerebellum tissue slide using 14156-1-AP (SLC26A11 antibody) at dilution of 1:200 (under 40x lens). Heat mediated antigen retrieval with .