

For Research Use Only

KRAP/SSFA2 Polyclonal antibody

Catalog Number: 14157-1-AP

Featured Product

7 Publications



Basic Information

Catalog Number:

14157-1-AP

Size:

150ul, Concentration: 800 ug/ml by Nanodrop;

Source:

Rabbit

Isotype:

IgG

Immunogen Catalog Number:

AG5339

GenBank Accession Number:

BC028706

GeneID (NCBI):

6744

UNIPROT ID:

P28290

Full Name:

sperm specific antigen 2

Calculated MW:

138 kDa

Observed MW:

180 kDa

Purification Method:

Antigen affinity purification

Recommended Dilutions:

WB 1:500-1:1000

IP 0.5-4.0 ug for 1.0-3.0 mg of total protein lysate

IHC 1:200-1:800

IF-P 1:200-1:800

Applications

Tested Applications:

WB, IHC, IF-P, IP, ELISA

Cited Applications:

WB, IHC, IF, ColP

Species Specificity:

human, mouse, rat

Cited Species:

human, canine

Note-IHC: suggested antigen retrieval with TE buffer pH 9.0; (*) Alternatively, antigen retrieval may be performed with citrate buffer pH 6.0

Positive Controls:

WB : mouse lung tissue, mouse testis tissue, rat lung tissue

IP : mouse testis tissue,

IHC : human stomach tissue,

IF-P : mouse pancreas tissue,

Background Information

KRAP (Ki-ras-induced actin-interacting protein), also known as SSFA2, CS1 or SPAG13, is a 1,259 amino acid cytoplasmic protein associated with filamentous-actin (F-actin). KRAP is strongly expressed in pancreas and testis. It is also present in colon cancer cell lines, and the expression is up-regulated by activated K-Ras. KRAP-deficient (KO) mice display decreased adiposity and improved glucose metabolism, implicating KRAP as a potential target for the prevention or treatment of obesity and related diseases. KRAP has also been suggested to be a potential target for cancer. This antibody recognizes endogenous KRAP, which migrates with an apparent molecular mass of 180 kDa in SDS-PAGE. (PMID: 14673706; 21501587; 21873152)

Notable Publications

Author	Pubmed ID	Journal	Application
Dingli Florent F	22946050	J Cell Sci	WB, IF
Akiko Okayama	26947549	J Proteomics	WB,IHC
Nagendra Babu Thillaiappan	34301929	Nat Commun	WB,IHC

Storage

Storage:

Store at -20°C. Stable for one year after shipment.

Storage Buffer:

PBS with 0.02% sodium azide and 50% glycerol pH 7.3.

Aliquoting is unnecessary for -20°C storage

*** 20ul sizes contain 0.1% BSA

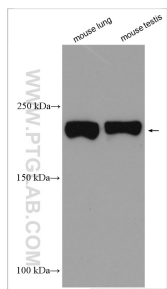
For technical support and original validation data for this product please contact:

T: 1 (888) 4PTGLAB (1-888-478-4522) (toll free in USA), or 1(312) 455-8498 (outside USA)

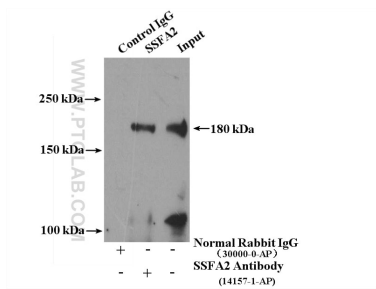
E: proteintech@ptglab.com
W: ptglab.com

This product is exclusively available under Proteintech Group brand and is not available to purchase from any other manufacturer.

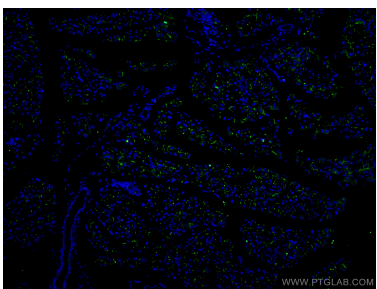
Selected Validation Data



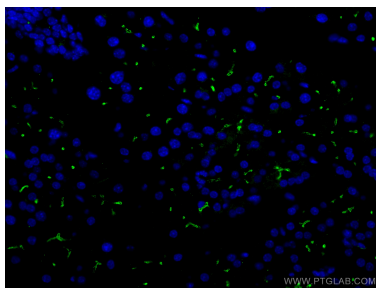
Various lysates were subjected to SDS PAGE followed by western blot with 14157-1-AP (KRAP/SSFA2 antibody) at dilution of 1:600 incubated at room temperature for 1.5 hours.



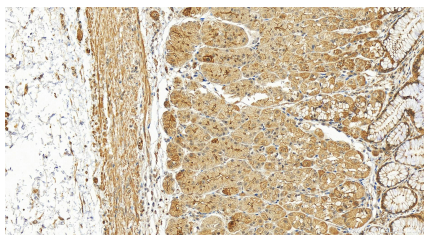
IP result of anti-KRAP/SSFA2 (IP:14157-1-AP, 4ug; Detection:14157-1-AP 1:500) with mouse testis tissue lysate 4000ug.



Immunofluorescent analysis of (4% PFA) fixed mouse pancreas tissue using KRAP/SSFA2 antibody (14157-1-AP) at dilution of 1:400 and CoraLite®488-Conjugated AffiniPure Goat Anti-Rabbit IgG(H+L).



Immunofluorescent analysis of (4% PFA) fixed mouse pancreas tissue using KRAP/SSFA2 antibody (14157-1-AP) at dilution of 1:400 and CoraLite®488-Conjugated AffiniPure Goat Anti-Rabbit IgG(H+L).



Immunohistochemical analysis of paraffin-embedded human stomach tissue slide using 14157-1-AP (KRAP/SSFA2 antibody) at dilution of 1:400 (under 20x lens). Heat mediated antigen retrieval with Tris-EDTA buffer (pH 9.0).