

For Research Use Only

EBF1 Polyclonal antibody

Catalog Number: 14159-1-AP

3 Publications



Basic Information

Catalog Number:

14159-1-AP

Size:

150ul, Concentration: 450 µg/ml by Nanodrop and 400 µg/ml by Bradford method using BSA as the standard;

Source:

Rabbit

Isotype:

IgG

Immunogen Catalog Number:

AG5341

GenBank Accession Number:

BC038805

GeneID (NCBI):

1879

UNIPROT ID:

Q9UH73

Full Name:

early B-cell factor 1

Calculated MW:

591 aa, 64 kDa

Observed MW:

57-67 kDa

Purification Method:

Antigen affinity purification

Recommended Dilutions:

WB 1:200-1:1000

IHC 1:50-1:500

Applications

Tested Applications:

WB, IHC, ELISA

Cited Applications:

WB, IHC

Species Specificity:

human, mouse

Cited Species:

mouse

Note-IHC: suggested antigen retrieval with TE buffer pH 9.0; (*) Alternatively, antigen retrieval may be performed with citrate buffer pH 6.0

Positive Controls:

WB : U2OS cells, Raji cells, 3T3-L1 cells

IHC : human stomach cancer tissue,

Background Information

EBF1, also named as O/E-1, OE-1, OLF1, COE1 and EBF, belongs to the COE family. It is a transcriptional activator which recognizes variations of the palindromic sequence 5'-ATTCCCNNGGAATT-3'. EBF1 is a key factor for the specification of B-cell lineage.

Notable Publications

Author	Pubmed ID	Journal	Application
Joshua E Burda	35614216	Nature	IHC
Junlei Zhang	35968927	ACS Nano	WB
Ting Wang	38303710	iScience	WB

Storage

Storage:

Store at -20°C. Stable for one year after shipment.

Storage Buffer:

PBS with 0.02% sodium azide and 50% glycerol pH 7.3.

Aliquoting is unnecessary for -20°C storage

*** 20ul sizes contain 0.1% BSA

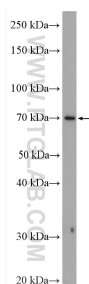
For technical support and original validation data for this product please contact:

T: 1 (888) 4PTGLAB (1-888-478-4522) (toll free in USA), or 1(312) 455-8498 (outside USA)

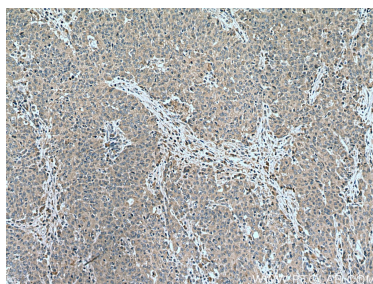
E: proteintech@ptglab.com
W: ptglab.com

This product is exclusively available under Proteintech Group brand and is not available to purchase from any other manufacturer.

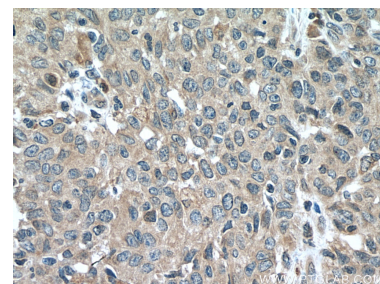
Selected Validation Data



U2OS cells were subjected to SDS PAGE followed by western blot with 14159-1-AP (EBF1 antibody) at dilution of 1:200 incubated at room temperature for 1.5 hours.



Immunohistochemical analysis of paraffin-embedded human stomach cancer tissue slide using 14159-1-AP (EBF1 antibody) at dilution of 1:100 (under 10x lens). Heat mediated antigen retrieval with Tris-EDTA buffer (pH 9.0).



Immunohistochemical analysis of paraffin-embedded human stomach cancer tissue slide using 14159-1-AP (EBF1 antibody) at dilution of 1:100 (under 40x lens). Heat mediated antigen retrieval with Tris-EDTA buffer (pH 9.0).