

For Research Use Only

Talin-1 Polyclonal antibody

Catalog Number: 14168-1-AP

Featured Product

29 Publications



Basic Information

Catalog Number:

14168-1-AP

Size:

150ul, Concentration: 650 ug/ml by Nanodrop;

Source:

Rabbit

Isotype:

IgG

Immunogen Catalog Number:

AG5367

GenBank Accession Number:

BC042923

GeneID (NCBI):

7094

UNIPROT ID:

Q9Y490

Full Name:

talin 1

Calculated MW:

2541 aa, 270 kDa

Observed MW:

250-270 kDa

Purification Method:

Antigen affinity purification

Recommended Dilutions:

WB 1:5000-1:50000

IP 0.5-4.0 ug for 1.0-3.0 mg of total protein lysate

IHC 1:250-1:8000

IF/ICC 1:150-1:600

Applications

Tested Applications:

WB, IHC, IF/ICC, FC (Intra), IP, ELISA

Cited Applications:

WB, IHC, IF, IP

Species Specificity:

human, mouse, rat

Cited Species:

human, mouse, rat, chicken

Note-IHC: suggested antigen retrieval with TE buffer pH 9.0; (*) Alternatively, antigen retrieval may be performed with citrate buffer pH 6.0

Positive Controls:

WB: HUVEC cells, HeLa cells, NIH/3T3 cells, C6 cells, HepG2 cells

IP: HeLa cells,

IHC: human liver cancer tissue, human colon tissue

IF/ICC: HUVEC cells, HeLa cells, HepG2 cells, A549 cells

Background Information

Talin-1 is a large cytoskeletal protein consisting of a globular head domain and a long rod comprised of a series of α -helical bundles (PMID: 35266014). Talin-1 is ubiquitously expressed and is a major component of focal adhesions which are multi-protein, integrin-containing complexes, mediating cell migration, adhesion and integrin signalling (PMID: 33431906). Talin-1 also plays a role in tumor formation, migration and metastasis in various malignancies (PMID: 37013489).

Notable Publications

Author	Pubmed ID	Journal	Application
Di Cui	36175877	BMC Cancer	WB,IF
Xiao Huang	32940450	ACS Nano	IF
Qian Wang	33015191	J Diabetes Res	WB,IF

Storage

Storage:

Store at -20°C. Stable for one year after shipment.

Storage Buffer:

PBS with 0.02% sodium azide and 50% glycerol

Aliquoting is unnecessary for -20°C storage

*** 20ul sizes contain 0.1% BSA

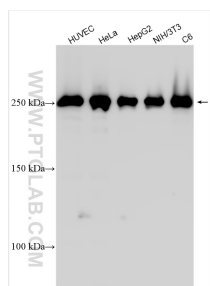
For technical support and original validation data for this product please contact:

T: 1 (888) 4PTGLAB (1-888-478-4522) (toll free in USA), or 1(312) 455-8498 (outside USA)

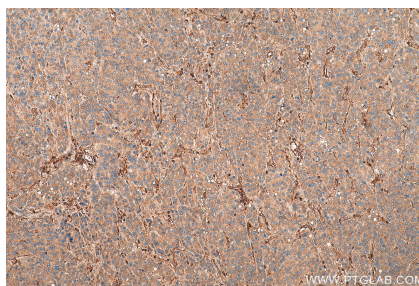
E: proteintech@ptglab.com
W: ptglab.com

This product is exclusively available under Proteintech Group brand and is not available to purchase from any other manufacturer.

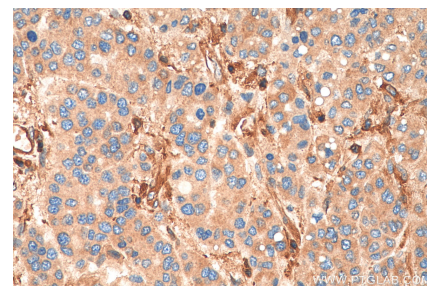
Selected Validation Data



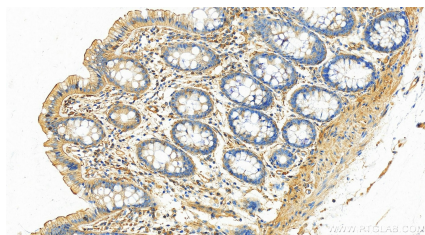
Various lysates were subjected to SDS PAGE followed by western blot with 14168-1-AP (Talin-1 antibody) at dilution of 1:40000 incubated at room temperature for 1.5 hours.



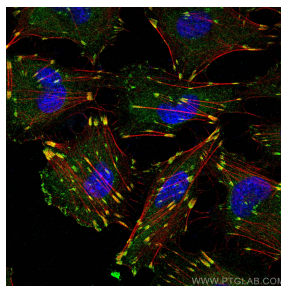
Immunohistochemical analysis of paraffin-embedded human liver cancer tissue slide using 14168-1-AP (Talin-1 antibody) at dilution of 1:500 (under 10x lens). Heat mediated antigen retrieval with Tris-EDTA buffer (pH 9.0).



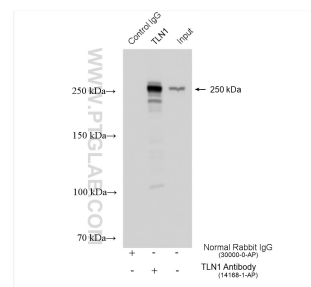
Immunohistochemical analysis of paraffin-embedded human liver cancer tissue slide using 14168-1-AP (Talin-1 antibody) at dilution of 1:500 (under 40x lens). Heat mediated antigen retrieval with Tris-EDTA buffer (pH 9.0).



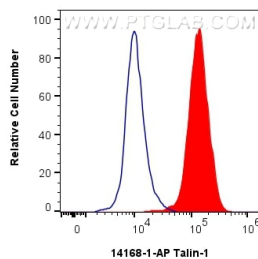
Immunohistochemical analysis of paraffin-embedded human colon tissue slide using 14168-1-AP (Talin-1 antibody) at dilution of 1:8000 (under 20x lens). Heat mediated antigen retrieval with Tris-EDTA buffer (pH 9.0).



Immunofluorescent analysis of (-20°C Ethanol) fixed HUVEC cells using Talin-1 antibody (14168-1-AP) at dilution of 1:300 and CoraLite®488-Conjugated AffiniPure Goat Anti-Rabbit IgG(H+L), CL594-Phalloidin (red).



IP result of anti-Talin-1 (IP:14168-1-AP, 4ug; Detection:14168-1-AP 1:40000) with HeLa cells lysate 1320 ug.



1x10⁶ HeLa cells were intracellularly stained with 0.4 ug Talin-1 Polyclonal antibody (14168-1-AP) and CoraLite®488-Conjugated AffiniPure Goat Anti-Rabbit IgG(H+L) (SA00013-2) red, or 0.4 ug Rabbit IgG control Rabbit PolyAb (30000-O-AP) (blue). Cells were fixed with 4% PFA and permeabilized with Flow Cytometry Perm Buffer (PF00011-C).