

For Research Use Only

# SCTR Polyclonal antibody

Catalog Number: 14172-1-AP **1 Publications**



## Basic Information

<b>Catalog Number:</b> 14172-1-AP	<b>GenBank Accession Number:</b> BC035757	<b>Purification Method:</b> Antigen affinity purification
<b>Size:</b> 150ul , Concentration: 450 µg/ml by Nanodrop;	<b>GeneID (NCBI):</b> 6344	<b>Recommended Dilutions:</b> WB 1:500-1:3000
<b>Source:</b> Rabbit	<b>Full Name:</b> SCTR	
<b>Isotype:</b> IgG	<b>Calculated MW:</b> 440 aa, 50 kDa	
<b>Immunogen Catalog Number:</b> AG5371	<b>Observed MW:</b> 50-55 kDa	

## Applications

<b>Tested Applications:</b> WB, ELISA	<b>Positive Controls:</b> WB : mouse pancreas tissue,
<b>Cited Applications:</b> WB	
<b>Species Specificity:</b> human, mouse, rat	
<b>Cited Species:</b> mouse	

## Background Information

SCTR is a member of the family B G protein-coupled receptors. SCTR is a receptor for SCT, a gastrointestinal peptide hormone secreted by the S cells of the duodenum. SCT regulates water homeostasis throughout the body, and influences the environment of the duodenum by regulating SCT in the stomach and pancreas. Studies suggest that SCT can act as a neuropeptide within the central nervous system (CNS), thus SCTR may regulate the function of the CNS.

## Notable Publications

Author	Pubmed ID	Journal	Application
Chen Wang	34146194	Neurochem Res	WB

## Storage

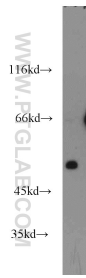
**Storage:**  
Store at -20°C. Stable for one year after shipment.  
**Storage Buffer:**  
PBS with 0.02% sodium azide and 50% glycerol pH 7.3.  
Aliquoting is unnecessary for -20°C storage

\*\*\* 20ul sizes contain 0.1% BSA

For technical support and original validation data for this product please contact:  
T: 1 (888) 4PTGLAB (1-888-478-4522) (toll free in USA), or 1(312) 455-8498 (outside USA)      E: proteintech@ptglab.com  
W: ptglab.com

This product is exclusively available under Proteintech Group brand and is not available to purchase from any other manufacturer.

## Selected Validation Data



mouse pancreas tissue were subjected to SDS PAGE followed by western blot with 14172-1-AP (SCTR antibody) at dilution of 1:1500 incubated at room temperature for 1.5 hours.