

For Research Use Only

XPR1 Polyclonal antibody

Catalog Number: 14174-1-AP

Featured Product

5 Publications



Basic Information

Catalog Number: 14174-1-AP	GenBank Accession Number: BC041142	Purification Method: Antigen affinity purification
Size: 150ul , Concentration: 500 µg/ml by Nanodrop;	GeneID (NCBI): 9213	Recommended Dilutions: WB 1:500-1:2000 IHC 1:20-1:200
Source: Rabbit	Full Name: xenotropic and polytropic retrovirus receptor	
Isotype: IgG	Calculated MW: 696 aa, 82 kDa	
Immunogen Catalog Number: AG5373	Observed MW: 82-84 kDa	

Applications

Tested Applications: FC, IHC, WB, ELISA	Positive Controls:
Cited Applications: IHC, WB	WB : Jurkat cells,
Species Specificity: human, mouse, rat	IHC : human heart tissue,
Cited Species: human, rat, mouse	

Note-IHC: suggested antigen retrieval with TE buffer pH 9.0; (*) Alternatively, antigen retrieval may be performed with citrate buffer pH 6.0

Background Information

XPR1 is a receptor for xenotropic and polytropic murine leukemia retroviruses and a homolog of yeast Syg1 and plant Pi transporter PHO1 (PMID: 20633538). XPR1 has been identified as an atypical G-protein-coupled receptor. Xenotropic or polytropic retrovirus binding to XPR1 can disrupt the cAMP-mediated signaling function of Xpr1, leading to the apoptosis of infected cells (PMID: 22090134).

Notable Publications

Author	Pubmed ID	Journal	Application
Xingyao Li	32019887	Proc Natl Acad Sci U S A	WB
Huifang Sun	36584480	Biochem Biophys Res Commun	WB
Yoko Akasu-Nagayoshi	35377528	Cancer Sci	WB

Storage

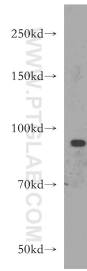
Storage:
Store at -20°C. Stable for one year after shipment.
Storage Buffer:
PBS with 0.02% sodium azide and 50% glycerol pH 7.3.
Aliquoting is unnecessary for -20°C storage

*** 20ul sizes contain 0.1%BSA

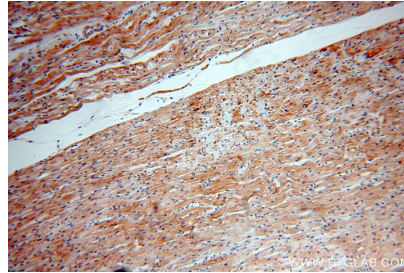
For technical support and original validation data for this product please contact:
T: 1 (888) 4PTGLAB (1-888-478-4522) (toll free in USA), or 1(312) 455-8498 (outside USA)
E: proteintech@ptglab.com
W: ptglab.com

This product is exclusively available under Proteintech Group brand and is not available to purchase from any other manufacturer.

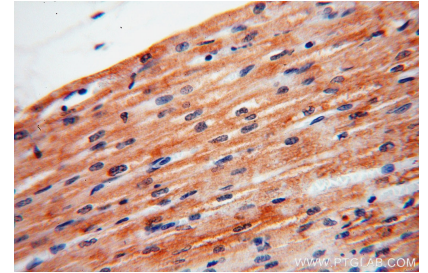
Selected Validation Data



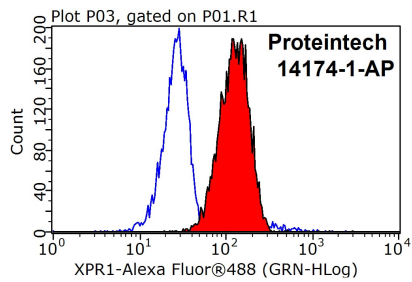
Jurkat cells were subjected to SDS PAGE followed by western blot with 14174-1-AP (XPR1 antibody) at dilution of 1:500 incubated at room temperature for 1.5 hours.



Immunohistochemical analysis of paraffin-embedded human heart using 14174-1-AP (XPR1 antibody) at dilution of 1:100 (under 10x lens).



Immunohistochemical analysis of paraffin-embedded human heart using 14174-1-AP (XPR1 antibody) at dilution of 1:100 (under 40x lens).



1×10^6 Jurkat cells were stained with 0.2ug XPR1 antibody (14174-1-AP, red) and control antibody (blue). Fixed with 90% MeOH blocked with 3% BSA (30 min). Alexa Fluor 488-conjugated AffiniPure Goat Anti-Rabbit IgG(H+L) with dilution 1:1000.