

For Research Use Only

# Liprin Alpha 1 Polyclonal antibody

Catalog Number: 14175-1-AP

Featured Product

25 Publications



## Basic Information

### Catalog Number:

14175-1-AP

### Size:

150ul, Concentration: 500 µg/ml by Nanodrop and 293 µg/ml by Bradford method using BSA as the standard;

### Source:

Rabbit

### Isotype:

IgG

### Immunogen Catalog Number:

AG5381

### GenBank Accession Number:

BC034046

### GeneID (NCBI):

8500

### Full Name:

protein tyrosine phosphatase, receptor type, f polypeptide (PTPRF), interacting protein (liprin), alpha 1

### Calculated MW:

1202 aa, 136 kDa

### Observed MW:

160 kDa

### Purification Method:

Antigen affinity purification

### Recommended Dilutions:

WB 1:500-1:1000  
IP 0.5-4.0 µg for IP and 1:500-1:1000 for WB  
IHC 1:50-1:500  
IF 1:20-1:200

## Applications

### Tested Applications:

FC, IF, IHC, IP, WB, ELISA

### Cited Applications:

IF, IHC, WB

### Species Specificity:

human, mouse, rat

### Cited Species:

human, mouse, monkey

### Positive Controls:

WB: HeLa cells, MCF-7 cells

IP: MCF-7 cells,

IHC: human prostate cancer tissue,

IF: HepG2 cells,

**Note-IHC: suggested antigen retrieval with TE buffer pH 9.0; (\*) Alternatively, antigen retrieval may be performed with citrate buffer pH 6.0**

## Background Information

Liprin alpha 1, encoded by the PPF1A1 gene, is a member of the LAR protein-tyrosine phosphatase-interacting protein (liprin) family. Liprins interact with members of LAR family of transmembrane protein tyrosine phosphatases, which are known to be important for axon guidance and mammary gland development. Liprin alpha 1 may regulate the disassembly of focal adhesions and thus help orchestrate cell-matrix interactions (PMID: 7796809). Alternatively spliced transcript variants encoding distinct isoforms have been described.

## Notable Publications

Author	Pubmed ID	Journal	Application
Marta Ripamonti	36171301	Commun Biol	WB, IF
Veronica Astro	27659488	Sci Rep	WB, IF
Kristyna Sala	31537859	Sci Rep	IF

## Storage

### Storage:

Store at -20°C. Stable for one year after shipment.

### Storage Buffer:

PBS with 0.02% sodium azide and 50% glycerol pH 7.3.

Aliquoting is unnecessary for -20°C storage

\*\*\* 20ul sizes contain 0.1% BSA

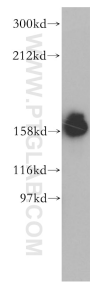
For technical support and original validation data for this product please contact:

T: 1 (888) 4PTGLAB (1-888-478-4522) (toll free in USA), or 1(312) 455-8498 (outside USA)

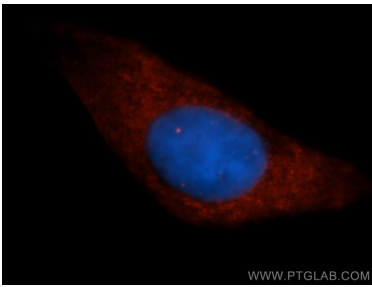
E: proteintech@ptglab.com  
W: ptglab.com

This product is exclusively available under Proteintech Group brand and is not available to purchase from any other manufacturer.

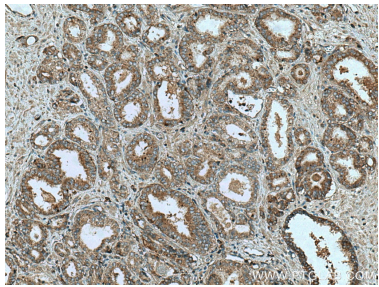
Selected Validation Data



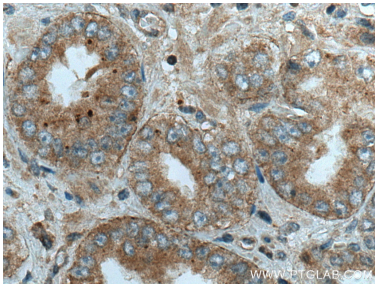
HeLa cells were subjected to SDS PAGE followed by western blot with 14175-1-AP (Liprin alpha 1 antibody) at dilution of 1:500 incubated at room temperature for 1.5 hours.



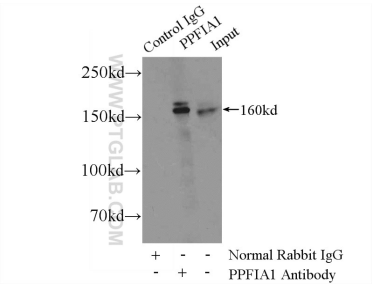
Immunofluorescent analysis of HepG2 cells, using PPFIA1 antibody 14175-1-AP at 1:50 dilution and Rhodamine-labeled goat anti-rabbit IgG (red). Blue pseudocolor = DAPI (fluorescent DNA dye).



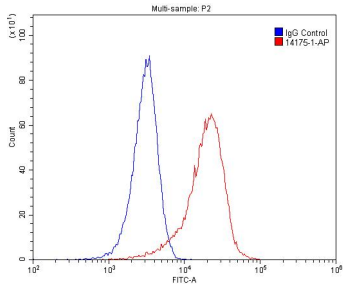
Immunohistochemical analysis of paraffin-embedded human prostate cancer tissue slide using 14175-1-AP (Liprin alpha 1 antibody) at dilution of 1:200 (under 10x lens). Heat mediated antigen retrieval with Tris-EDTA buffer (pH 9.0).



Immunohistochemical analysis of paraffin-embedded human prostate cancer tissue slide using 14175-1-AP (Liprin alpha 1 antibody) at dilution of 1:200 (under 40x lens). Heat mediated antigen retrieval with Tris-EDTA buffer (pH 9.0).



IP Result of anti-Liprin alpha 1 (IP:14175-1-AP, 4ug; Detection:14175-1-AP 1:500) with MCF-7 cells lysate 3200ug.



1X10<sup>6</sup> HeLa cells were stained with 0.2ug Liprin alpha 1 antibody (14175-1-AP, red) and control antibody (blue). Cells were fixed with 4% PFA and permeabilized with 0.1% Triton X-100. Alexa Fluor 488-conjugated AffiniPure Goat Anti-Rabbit IgG(H+L) with dilution 1:1500.