

For Research Use Only

HSD11B2 Polyclonal antibody

Catalog Number: 14192-1-AP

18 Publications



Basic Information

Catalog Number:

14192-1-AP

Size:

150ul, Concentration: 450 ug/ml by Nanodrop and 333 ug/ml by Bradford method using BSA as the standard;

Source:

Rabbit

Isotype:

IgG

Immunogen Catalog Number:

AG5146

GenBank Accession Number:

BC036780

GeneID (NCBI):

3291

UNIPROT ID:

P80365

Full Name:

hydroxysteroid (11-beta) dehydrogenase 2

Calculated MW:

405 aa, 44 kDa

Observed MW:

40-43 kDa

Purification Method:

Antigen affinity purification

Recommended Dilutions:

WB 1:1000-1:4000

IHC 1:20-1:200

Applications

Tested Applications:

WB, IHC, ELISA

Cited Applications:

WB, IHC, IF

Species Specificity:

human, mouse, rat

Cited Species:

human, mouse, rat, pig

Note-IHC: suggested antigen retrieval with TE buffer pH 9.0; (*) Alternatively, antigen retrieval may be performed with citrate buffer pH 6.0

Positive Controls:

WB : human placenta tissue, mouse kidney tissue, human kidney tissue, Transfected HEK-293 cells

IHC : human kidney tissue,

Background Information

The HSD11B2 gene encodes the type II isoform of 11-beta-hydroxysteroid dehydrogenase, a microsomal enzyme complex responsible for the interconversion of biologically active cortisol and inactive cortisone. This protein catalyzes the cortisol-to-cortisone reaction. This protein expresses approximately 44 kDa in placenta, trophoblast, and distal colon, but in kidney tissue, there are two bands of approximately 44 and 48 kDa can be consistently observed and no signal is seen in decidua, adrenal, or liver (PMID:9048640). HSD11B2 protein was detected in CEM-C7 cells via immunoblot analysis as a dimer and trimer of approximately 80 and 120 kDa (PMID:23762608).

Notable Publications

Author	Pubmed ID	Journal	Application
Huiduo Guo	34695613	Ecotoxicol Environ Saf	WB
Yuki Nouchi	36368682	Exp Clin Endocrinol Diabetes	WB
Haodong Chen	34059707	Sci Rep	WB

Storage

Storage:

Store at -20°C. Stable for one year after shipment.

Storage Buffer:

PBS with 0.02% sodium azide and 50% glycerol pH 7.3.

Aliquoting is unnecessary for -20°C storage

*** 20ul sizes contain 0.1% BSA

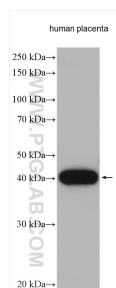
For technical support and original validation data for this product please contact:

T: 1 (888) 4PTGLAB (1-888-478-4522) (toll free in USA), or 1(312) 455-8498 (outside USA)

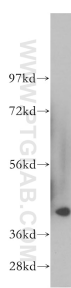
E: proteintech@ptglab.com
W: ptglab.com

This product is exclusively available under Proteintech Group brand and is not available to purchase from any other manufacturer.

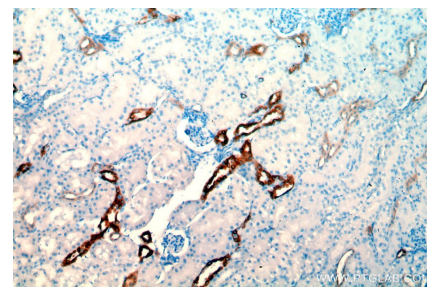
Selected Validation Data



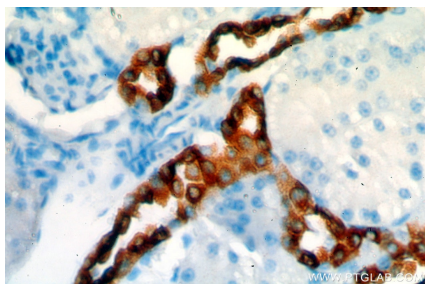
Human placenta tissue lysates were subjected to SDS PAGE followed by western blot with 14192-1-AP (HSD11B2 antibody) at dilution of 1:2000 incubated at room temperature for 1.5 hours.



human kidney tissue were subjected to SDS PAGE followed by western blot with 14192-1-AP (HSD11B2 antibody) at dilution of 1:300 incubated at room temperature for 1.5 hours.



Immunohistochemical analysis of paraffin-embedded human kidney using 14192-1-AP (HSD11B2 antibody) at dilution of 1:50 (under 10x lens).



Immunohistochemical analysis of paraffin-embedded human kidney using 14192-1-AP (HSD11B2 antibody) at dilution of 1:50 (under 40x lens).