

For Research Use Only

# CREB5 Polyclonal antibody, PBS Only

Catalog Number: 14196-1-PBS

Featured Product



## Basic Information

**Catalog Number:**

14196-1-PBS

**Size:**

100ug, Concentration: 1 mg/ml by Nanodrop;

**Source:**

Rabbit

**Isotype:**

IgG

**Immunogen Catalog Number:**

AG5399

**GenBank Accession Number:**

BC059400

**GeneID (NCBI):**

9586

**UNIPROT ID:**

Q02930

**Full Name:**

cAMP responsive element binding protein 5

**Calculated MW:**

57 kDa

**Observed MW:**

57 kDa

**Purification Method:**

Antigen affinity purification

## Applications

**Tested Applications:**

WB, Indirect ELISA

**Species Specificity:**

human

## Background Information

cyclic AMP responsive element binding protein 5 (CREB5), also known as CRE-BPA, a member of the cAMP response element binding protein family, is a transcription factor specifically expressed in superficial zone articular chondrocytes and is required for TGF- $\beta$  and EGFR signaling. Knockdown of CREB5 decreased the c-jun and c-fos expression levels in HC-a cells (PMID: 38549717). Increased CREB5 expression is positively correlated with tumor cell invasion and a poor prognosis for cancer patients with epithelial ovarian cancer and hepatocellular carcinoma (PMID: 38418476). This protein specifically binds to CRE as a homodimer or a heterodimer with c-Jun or CRE-BP1, and functions as a CRE-dependent trans-activator. Alternatively spliced transcript variants encoding different isoforms have been identified (PMID: 33712729).

## Storage

**Storage:**

Store at -80°C.

**Storage Buffer:**

PBS Only

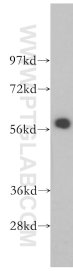
For technical support and original validation data for this product please contact:

T: 1 (888) 4PTGLAB (1-888-478-4522) (toll free in USA), or 1(312) 455-8498 (outside USA)

E: [proteintech@ptglab.com](mailto:proteintech@ptglab.com)  
W: [ptglab.com](http://ptglab.com)

This product is exclusively available under Proteintech Group brand and is not available to purchase from any other manufacturer.

## Selected Validation Data



HepG2 cells were subjected to SDS PAGE followed by western blot with 14196-1-AP (CREB5 antibody) at dilution of 1:500 incubated at room temperature for 1.5 hours. This data was developed using the same antibody clone with 14196-1-PBS in a different storage buffer formulation.