

For Research Use Only

# SLC27A6 Polyclonal antibody

Catalog Number: 14197-1-AP

1 Publications



## Basic Information

Catalog Number:

14197-1-AP

Size:

150ul, Concentration: 400 ug/ml by Nanodrop;

Source:

Rabbit

Isotype:

IgG

Immunogen Catalog Number:

AG5400

GenBank Accession Number:

BC041945

GeneID (NCBI):

28965

UNIPROT ID:

Q9Y2P4

Full Name:

solute carrier family 27 (fatty acid transporter), member 6

Calculated MW:

70 kDa

Observed MW:

70 kDa

Purification Method:

Antigen affinity purification

Recommended Dilutions:

WB 1:500-1:2000

## Applications

Tested Applications:

WB, ELISA

Cited Applications:

WB

Species Specificity:

human, mouse

Cited Species:

human, mouse

Positive Controls:

WB: MCF-7 cells, mouse testis tissue, mouse liver tissue, mouse kidney tissue

## Background Information

SLC27A6, also known as FATP6, ACSVL2, FACVL2, belongs to the ATP-dependent AMP-binding enzyme family. SLC27A6 mediates the import of long-chain fatty acids (LCFA) into the cell by facilitating their transport at the plasma membrane (PMID: 12556534). SLC27A6 plays a pivotal role in regulating available LCFA substrates from exogenous sources in tissues undergoing high levels of beta-oxidation. SLC27A6 is strongly expressed in heart and localizes to cardiac myocytes. SLC27A6 is expressed at moderate levels in placenta, testis, and adrenal glands (PMID: 12556534).

## Notable Publications

Author	Pubmed ID	Journal	Application
Yi Jiang	39716642	Biochem Pharmacol	WB

## Storage

Storage:

Store at -20°C. Stable for one year after shipment.

Storage Buffer:

PBS with 0.02% sodium azide and 50% glycerol pH 7.3.

Aliquoting is unnecessary for -20°C storage

\*\*\* 20ul sizes contain 0.1% BSA

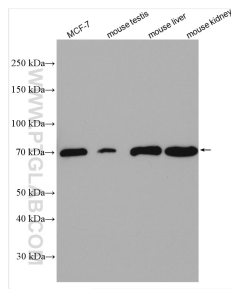
For technical support and original validation data for this product please contact:

T: 1 (888) 4PTGLAB (1-888-478-4522) (toll free in USA), or 1(312) 455-8498 (outside USA)

E: [proteintech@ptglab.com](mailto:proteintech@ptglab.com)  
W: [ptglab.com](http://ptglab.com)

This product is exclusively available under Proteintech Group brand and is not available to purchase from any other manufacturer.

## Selected Validation Data



Various lysates were subjected to SDS PAGE followed by western blot with 14197-1-AP (SLC27A6 antibody) at dilution of 1:1000 incubated at room temperature for 1.5 hours.