

For Research Use Only

PLEKHH2 Polyclonal antibody

Catalog Number: 14204-1-AP

1 Publications



Basic Information

Catalog Number:

14204-1-AP

Size:

150ul, Concentration: 173 ug/ml by Nanodrop and 173 ug/ml by Bradford method using BSA as the standard;

Source:

Rabbit

Isotype:

IgG

Immunogen Catalog Number:

AG5409

GenBank Accession Number:

BC063310

GeneID (NCBI):

130271

UNIPROT ID:

Q8IVE3

Full Name:

pleckstrin homology domain containing, family H (with MyTH4 domain) member 2

Calculated MW:

168 kDa

Observed MW:

120 kDa

Purification Method:

Antigen affinity purification

Recommended Dilutions:

WB 1:200-1:1000

Applications

Tested Applications:

WB, ELISA

Cited Applications:

WB, IHC

Species Specificity:

human, mouse, rat

Cited Species:

human

Positive Controls:

WB: Jurkat cells,

Background Information

PLEKHH2 is a 1491-residue intracellular protein highly enriched in renal glomerular podocytes. PLEKHH2 is one of two previously uncharacterized PLEKHH proteins encoded in the mammalian genomes. A PLEKHH ortholog has also been described in *Drosophila*, *Caenorhabditis elegans*, and zebrafish. In *C. elegans*, the loss of the protein was found to cause variable axon guidance defects.

Notable Publications

Author	Pubmed ID	Journal	Application
Rui Wang	36209201	Cell Death Dis	WB, IHC

Storage

Storage:

Store at -20°C. Stable for one year after shipment.

Storage Buffer:

PBS with 0.02% sodium azide and 50% glycerol pH 7.3.

Aliquoting is unnecessary for -20°C storage

*** 20ul sizes contain 0.1% BSA

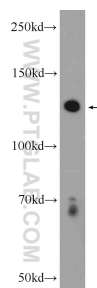
For technical support and original validation data for this product please contact:

T: 1 (888) 4PTGLAB (1-888-478-4522) (toll free in USA), or 1(312) 455-8498 (outside USA)

E: proteintech@ptglab.com
W: ptglab.com

This product is exclusively available under Proteintech Group brand and is not available to purchase from any other manufacturer.

Selected Validation Data



Jurkat cells were subjected to SDS PAGE followed by western blot with 14204-1-AP (PLEKHH2 Antibody) at dilution of 1:300 incubated at room temperature for 1.5 hours.