

For Research Use Only

CSTF2T Polyclonal antibody

Catalog Number: 14206-1-AP



Basic Information

Catalog Number:

14206-1-AP

Size:

150ul, Concentration: 600 µg/ml by Nanodrop and 413 µg/ml by Bradford method using BSA as the standard;

Source:

Rabbit

Isotype:

IgG

Immunogen Catalog Number:

AG5411

GenBank Accession Number:

BC028239

GeneID (NCBI):

23283

Full Name:

cleavage stimulation factor, 3' pre-RNA, subunit 2, 64kDa, tau variant

Calculated MW:

64 kDa

Observed MW:

65-70 kDa

Purification Method:

Antigen affinity purification

Recommended Dilutions:

WB 1:2000-1:10000

IP 0.5-4.0 µg for IP and 1:500-1:2000 for WB

IHC 1:20-1:200

IF 1:50-1:500

Applications

Tested Applications:

IF, IHC, IP, WB, ELISA

Species Specificity:

human, mouse, rat

Note-IHC: suggested antigen retrieval with TE buffer pH 9.0; (*) Alternatively, antigen retrieval may be performed with citrate buffer pH 6.0

Positive Controls:

WB : A549 cells, rat brain tissue, human brain tissue, HeLa cells, HepG2 cells, mouse liver tissue

IP : mouse brain tissue, HeLa cells

IHC : human prostate cancer tissue,

IF : HepG2 cells,

Background Information

Storage

Storage:

Store at -20°C. Stable for one year after shipment.

Storage Buffer:

PBS with 0.02% sodium azide and 50% glycerol pH 7.3.

Aliquoting is unnecessary for -20°C storage

*** 20ul sizes contain 0.1% BSA

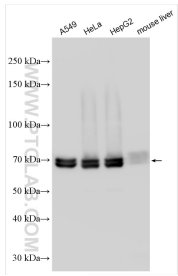
For technical support and original validation data for this product please contact:

T: 1 (888) 4PTGLAB (1-888-478-4522) (toll free in USA), or 1(312) 455-8498 (outside USA)

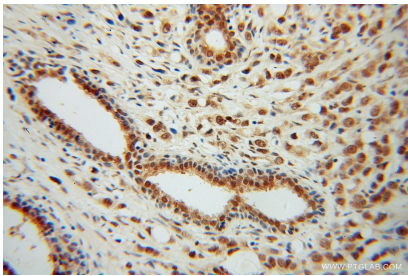
E: proteintech@ptglab.com
W: ptglab.com

This product is exclusively available under Proteintech Group brand and is not available to purchase from any other manufacturer.

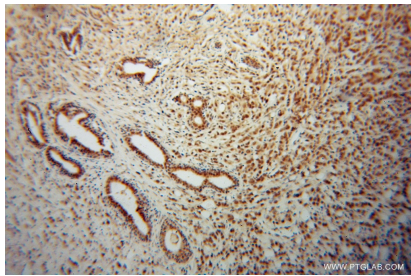
Selected Validation Data



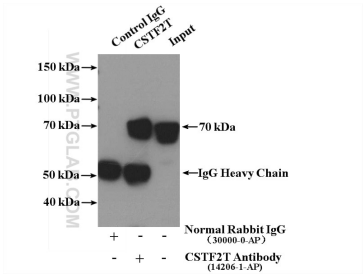
Various lysates were subjected to SDS PAGE followed by western blot with 14206-1-AP (CSTF2T antibody) at dilution of 1:5000 incubated at room temperature for 1.5 hours.



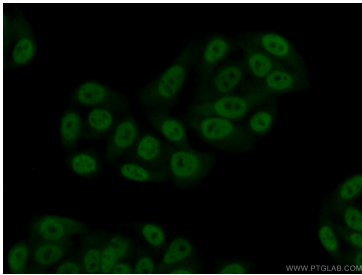
Immunohistochemical analysis of paraffin-embedded human prostate cancer using 14206-1-AP (CSTF2T antibody) at dilution of 1:100 (under 40x lens).



Immunohistochemical analysis of paraffin-embedded human prostate cancer using 14206-1-AP (CSTF2T antibody) at dilution of 1:100 (under 10x lens).



IP Result of anti-CSTF2T (IP:14206-1-AP, 4ug; Detection:14206-1-AP 1:1000) with mouse brain tissue lysate 5200ug.



Immunofluorescent analysis of (10% Formaldehyde) fixed HepG2 cells using 14206-1-AP (CSTF2T antibody) at dilution of 1:50 and Alexa Fluor 488-conjugated AffiniPure Goat Anti-Rabbit IgG(H+L).